



[Go to Product page](#)

Datasheet for ABIN652302  
**anti-SPHK1 antibody (C-Term)**

4 Images

Overview

Quantity:	400 µL
Target:	SPHK1
Binding Specificity:	AA 313-343, C-Term
Reactivity:	Human
Host:	Rabbit
Clonality:	Polyclonal
Conjugate:	This SPHK1 antibody is un-conjugated
Application:	Western Blotting (WB), Immunohistochemistry (Paraffin-embedded Sections) (IHC (p)), Flow Cytometry (FACS)

Product Details

Immunogen:	This SPHK1 antibody is generated from rabbits immunized with a KLH conjugated synthetic peptide between 313-343 amino acids from the C-terminal region of human SPHK1.
Clone:	RB15395
Isotype:	Ig Fraction
Purification:	This antibody is prepared by Saturated Ammonium Sulfate (SAS) precipitation followed by dialysis against PBS.

Target Details

Target:	SPHK1
Alternative Name:	SPHK1 ( <a href="#">SPHK1 Products</a> )

## Target Details

---

**Background:** SPHK1 is a novel lipid messenger with both intracellular and extracellular functions. Intracellularly, it regulates proliferation and survival, and extracellularly, it is a ligand for EDG1 (MIM 601974). Various stimuli increase cellular levels of SPP by activation of sphingosine kinase (SPHK), the enzyme that catalyzes the phosphorylation of sphingosine. Competitive inhibitors of SPHK block formation of SPP and selectively inhibit cellular proliferation induced by a variety of factors, including platelet-derived growth factor (e.g., MIM 173430) and serum.

**Gene ID:** 8877

**NCBI Accession:** [NP\\_001136073](#), [NP\\_001136074](#), [NP\\_068807](#), [NP\\_892010](#)

**UniProt:** [Q9NYA1](#)

**Pathways:** [VEGF Signaling](#)

## Application Details

---

**Application Notes:** WB: 1:1000. WB: 1:1000. IHC-P: 1:50~100. FC: 1:10~50

**Restrictions:** For Research Use only

## Handling

---

**Format:** Liquid

**Buffer:** Purified polyclonal antibody supplied in PBS with 0.09 % (W/V) sodium azide.

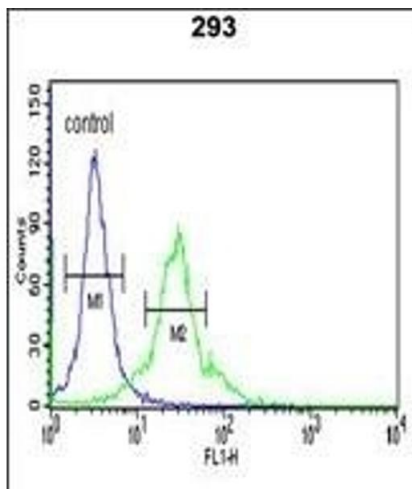
**Preservative:** Sodium azide

**Precaution of Use:** This product contains Sodium azide: a POISONOUS AND HAZARDOUS SUBSTANCE which should be handled by trained staff only.

**Storage:** 4 °C, -20 °C

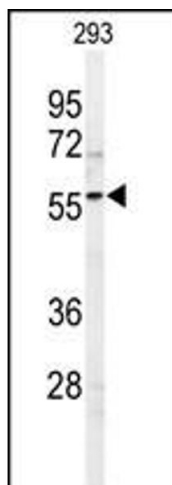
**Storage Comment:** Maintain refrigerated at 2-8 °C for up to 6 months. For long term storage store at -20 °C in small aliquots to prevent freeze-thaw cycles.

**Expiry Date:** 6 months



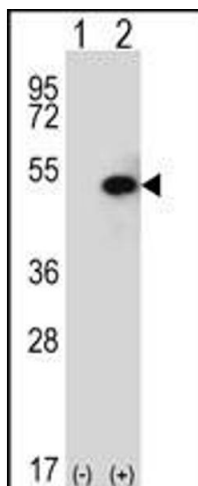
### Flow Cytometry

**Image 1.** SPHK1 Antibody (C-term ) (ABIN652302 and ABIN2837969) flow cytometric analysis of 293 cells (right histogram) compared to a negative control cell (left histogram).FITC-conjugated goat-anti-rabbit secondary antibodies were used for the analysis.



### Western Blotting

**Image 2.** Western blot analysis of SPHK1 Antibody (C-term ) (ABIN652302 and ABIN2837969) in 293 cell line lysates (35 µg/lane).SPHK1 (arrow) was detected using the purified Pab.



### Western Blotting

**Image 3.** Western blot analysis of SPHK1 (arrow) using rabbit polyclonal SPHK1 Antibody (C-term ) (ABIN652302 and ABIN2837969). 293 cell lysates (2 µg/lane) either nontransfected (Lane 1) or transiently transfected (Lane 2) with the SPHK1 gene.

Please check the [product details page](#) for more images. Overall 4 images are available for ABIN652302.