



[Go to Product page](#)

Datasheet for ABIN652309

anti-NPX1 antibody (AA 322-350)

7 Images

Overview

Quantity:	400 µL
Target:	NPX1
Binding Specificity:	AA 322-350
Reactivity:	Human, Mouse, Rat
Host:	Rabbit
Clonality:	Polyclonal
Conjugate:	This NPX1 antibody is un-conjugated
Application:	Western Blotting (WB), Immunohistochemistry (Paraffin-embedded Sections) (IHC (p))

Product Details

Immunogen:	This NPTX1 antibody is generated from rabbits immunized with a KLH conjugated synthetic peptide between 322-350 amino acids from human NPTX1.
Clone:	RB15369
Isotype:	Ig Fraction
Purification:	This antibody is purified through a protein A column, followed by peptide affinity purification.

Target Details

Target:	NPX1
Alternative Name:	NPTX1 (NPX1 Products)
Background:	NPTX1 is a member of the neuronal pentraxin family. Human neuronal pentraxin 1 is similar to

Target Details

rat NP1 which is a binding protein for the snake venom toxin taipoxin.

Gene ID: 4884

NCBI Accession: [NP_002513](#)

UniProt: [Q15818](#)

Pathways: [Carbohydrate Homeostasis](#), [Regulation of Cell Size](#), [Signaling Events mediated by VEGFR1 and VEGFR2](#), [Smooth Muscle Cell Migration](#), [Platelet-derived growth Factor Receptor Signaling](#), [VEGFR1 Specific Signals](#), [SARS-CoV-2 Protein Interactome](#)

Application Details

Application Notes: WB: 1:1000. WB: 1:2000. WB: 1:2000. WB: 1:2000. WB: 1:2000. IHC-P: 1:25. IHC-P: 1:25

Restrictions: For Research Use only

Handling

Format: Liquid

Buffer: Purified polyclonal antibody supplied in PBS with 0.09 % (W/V) sodium azide.

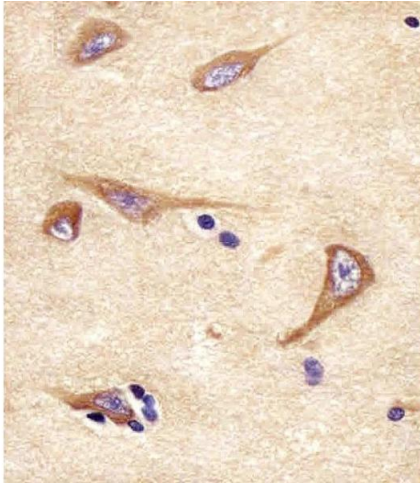
Preservative: Sodium azide

Precaution of Use: This product contains Sodium azide: a POISONOUS AND HAZARDOUS SUBSTANCE which should be handled by trained staff only.

Storage: 4 °C, -20 °C

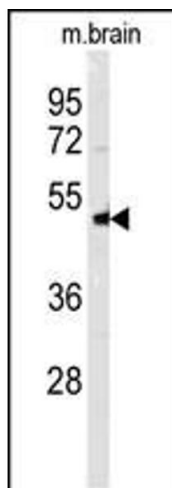
Storage Comment: Maintain refrigerated at 2-8 °C for up to 6 months. For long term storage store at -20 °C in small aliquots to prevent freeze-thaw cycles.

Expiry Date: 6 months



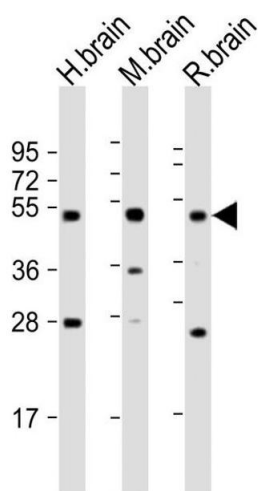
Immunohistochemistry (Paraffin-embedded Sections)

Image 1. (ABIN652309 and ABIN2841413) staining NPTX1 in human brain tissue sections by Immunohistochemistry (IHC-P - paraformaldehyde-fixed, paraffin-embedded sections). Tissue was fixed with formaldehyde and blocked with 3 % BSA for 0.5 hour at room temperature, antigen retrieval was by heat mediation with a citrate buffer (pH 6). Samples were incubated with primary antibody (1/25) for 1 hour at 37 °C. A undiluted biotinylated goat polyvalent antibody was used as the secondary antibody.



Western Blotting

Image 2. Western blot analysis of NPTX1- (ABIN652309 and ABIN2841413) in mouse brain tissue lysates (35 µg/lane). NPTX1 (arrow) was detected using the purified Pab.



Western Blotting

Image 3. All lanes : Anti-NPTX1 Antibody at 1:2000 dilution
 Lane 1: human brain lysate Lane 2: mouse brain lysate Lane 3: rat brain lysate Lysates/proteins at 20 µg per lane.
 Secondary Goat Anti-Rabbit IgG, (H+L), Peroxidase conjugated at 1/10000 dilution. Predicted band size : 47 kDa
 Blocking/Dilution buffer: 5 % NFDN/TBST.

Please check the [product details page](#) for more images. Overall 7 images are available for ABIN652309.