

Datasheet for ABIN652314
anti-CA2 antibody (N-Term)

3 Images

[Go to Product page](#)

Overview

Quantity:	400 µL
Target:	CA2
Binding Specificity:	AA 54-83, N-Term
Reactivity:	Human, Mouse
Host:	Rabbit
Clonality:	Polyclonal
Conjugate:	This CA2 antibody is un-conjugated
Application:	Western Blotting (WB), Immunofluorescence (IF)

Product Details

Immunogen:	This CA2 antibody is generated from rabbits immunized with a KLH conjugated synthetic peptide between 54-83 amino acids from the N-terminal region of human CA2.
Clone:	RB18368
Isotype:	Ig Fraction
Purification:	This antibody is prepared by Saturated Ammonium Sulfate (SAS) precipitation followed by dialysis against PBS.

Target Details

Target:	CA2
Alternative Name:	CA2 (CA2 Products)

Target Details

Background:	CA2 is one of several (at least 7) isozymes of carbonic anhydrase. Carbonic anhydrase catalyzes reversible hydration of carbon dioxide. Defects in this enzyme are associated with osteopetrosis and renal tubular acidosis.
-------------	--

Molecular Weight:	29246
-------------------	-------

Gene ID:	760
----------	-----

NCBI Accession:	NP_000058
-----------------	---------------------------

UniProt:	P00918
----------	------------------------

Application Details

Application Notes:	IF: 1:10~50. WB: 1:1000. WB: 1:1000
--------------------	-------------------------------------

Restrictions:	For Research Use only
---------------	-----------------------

Handling

Format:	Liquid
---------	--------

Buffer:	Purified polyclonal antibody supplied in PBS with 0.09 % (W/V) sodium azide.
---------	--

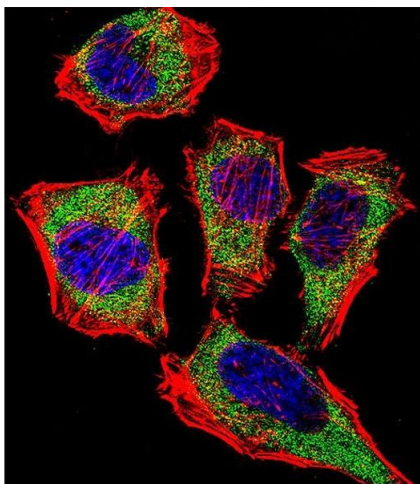
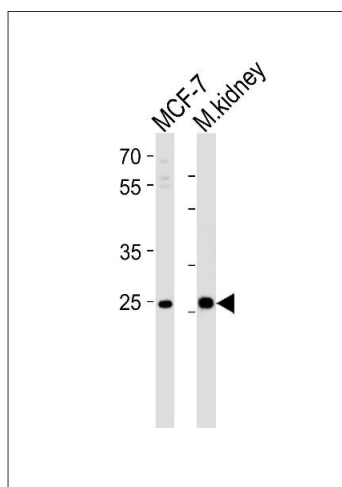
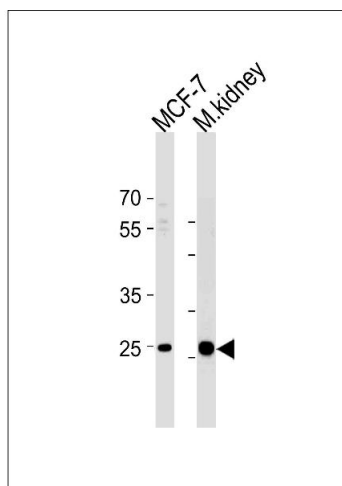
Preservative:	Sodium azide
---------------	--------------

Precaution of Use:	This product contains Sodium azide: a POISONOUS AND HAZARDOUS SUBSTANCE which should be handled by trained staff only.
--------------------	--

Storage:	4 °C, -20 °C
----------	--------------

Storage Comment:	Maintain refrigerated at 2-8 °C for up to 6 months. For long term storage store at -20 °C in small aliquots to prevent freeze-thaw cycles.
------------------	--

Expiry Date:	6 months
--------------	----------



Western Blotting

Image 1. CA2 Antibody (N-term) (ABIN652314 and ABIN2841442) western blot analysis in MCF-7 cell line and mouse kidney tissue lysates (35 µg/lane). This demonstrates the CA2 antibody detected the CA2 protein (arrow).

Western Blotting

Image 2. Western blot analysis of lysates from MCF-7 cell line and mouse kidney tissue lysate (from left to right), using CA2 Antibody (N-term) (ABIN652314 and ABIN2841442). (ABIN652314 and ABIN2841442) was diluted at 1:1000 at each lane. A goat anti-rabbit IgG H&L(HRP) at 1:5000 dilution was used as the secondary antibody. Lysates at 35 µg per lane.

Immunofluorescence

Image 3. Fluorescent confocal image of HeLa cell stained with CA2 Antibody (N-term) (ABIN652314 and ABIN2841442). HeLa cells were fixed with 4 % PFA (20 min), permeabilized with Triton X-100 (0.1 %, 10 min), then incubated with CA2 primary antibody (1:25, 1 h at 37 °C). For secondary antibody, Alexa Fluor® 488 conjugated donkey anti-rabbit antibody (green) was used (1:400, 50 min at 37 °C). Cytoplasmic actin was counterstained with Alexa Fluor® 555 (red) conjugated Phalloidin (7 units/mL, 1 h at 37 °C). Nuclei were counterstained with DAPI (blue) (10 µg/mL, 10 min). CA2 immunoreactivity is localized to Cytoplasm significantly.