

Datasheet for ABIN652315
anti-CA5B antibody (C-Term)

3 Images

[Go to Product page](#)

Overview

Quantity:	400 µL
Target:	CA5B
Binding Specificity:	AA 253-283, C-Term
Reactivity:	Human, Mouse
Host:	Rabbit
Clonality:	Polyclonal
Conjugate:	This CA5B antibody is un-conjugated
Application:	Western Blotting (WB), Immunohistochemistry (Paraffin-embedded Sections) (IHC (p)), Flow Cytometry (FACS)

Product Details

Immunogen:	This CA5B antibody is generated from rabbits immunized with a KLH conjugated synthetic peptide between 253-283 amino acids from the C-terminal region of human CA5B.
Clone:	RB18377
Isotype:	Ig Fraction
Predicted Reactivity:	Rat
Purification:	This antibody is prepared by Saturated Ammonium Sulfate (SAS) precipitation followed by dialysis against PBS.

Target Details

Target:	CA5B
---------	------

Target Details

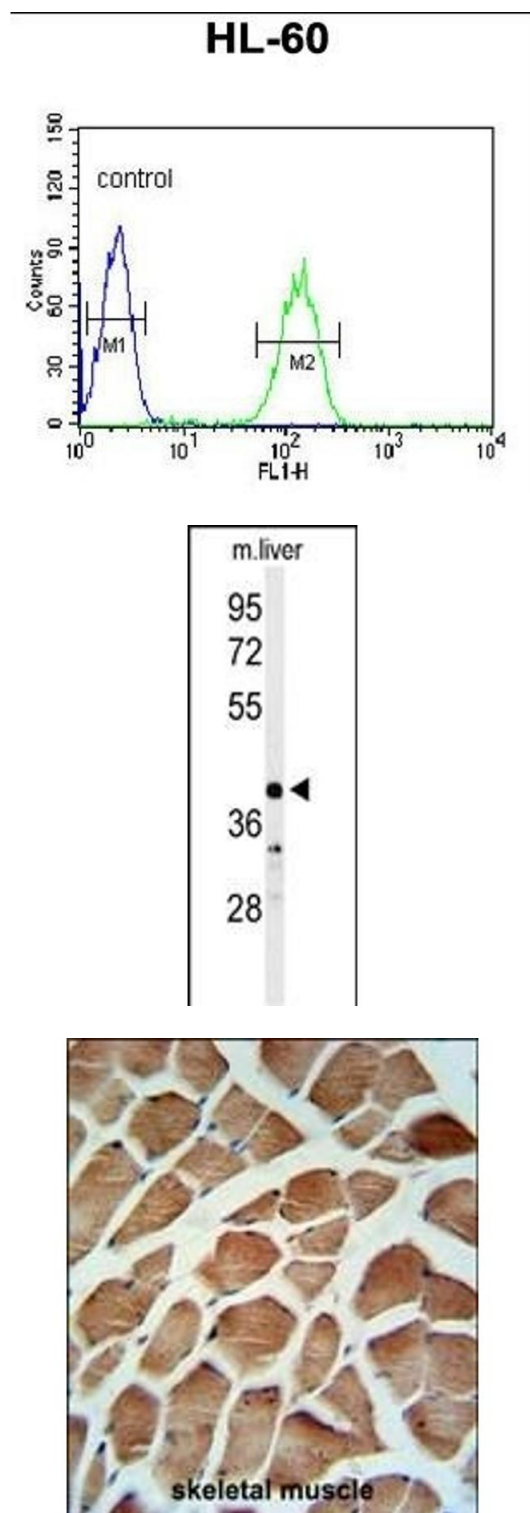
Alternative Name:	CA5B (CA5B Products)
Background:	CA5B belongs a large family of zinc metalloenzymes that catalyze the reversible hydration of carbon dioxide. This protein is localized in the mitochondria and shows the highest sequence similarity to the other mitochondrial CA, CA VA. The protein has a wider tissue distribution than CA VA, which is restricted to the liver.
Molecular Weight:	36434
Gene ID:	11238
NCBI Accession:	NP_009151
UniProt:	Q9Y2D0

Application Details

Application Notes:	WB: 1:1000. IHC-P: 1:50~100. FC: 1:10~50
Restrictions:	For Research Use only

Handling

Format:	Liquid
Buffer:	Purified polyclonal antibody supplied in PBS with 0.09 % (W/V) sodium azide.
Preservative:	Sodium azide
Precaution of Use:	This product contains Sodium azide: a POISONOUS AND HAZARDOUS SUBSTANCE which should be handled by trained staff only.
Storage:	4 °C,-20 °C
Storage Comment:	Maintain refrigerated at 2-8 °C for up to 6 months. For long term storage store at -20 °C in small aliquots to prevent freeze-thaw cycles.
Expiry Date:	6 months



Flow Cytometry

Image 1. CA5B Antibody (C-term) (ABIN652315 and ABIN2841444) flow cytometric analysis of HL-60 cells (right histogram) compared to a negative control cell (left histogram). FITC-conjugated goat-anti-rabbit secondary antibodies were used for the analysis.

Western Blotting

Image 2. Western blot analysis of CA5B Antibody (C-term) (ABIN652315 and ABIN2841444) in mouse liver tissue lysates (35 μ g/lane). CA5B (arrow) was detected using the purified Pab.

Immunohistochemistry (Paraffin-embedded Sections)

Image 3. CA5B Antibody (C-term) (ABIN652315 and ABIN2841444) IHC analysis in formalin fixed and paraffin embedded human skeletal muscle followed by peroxidase conjugation of the secondary antibody and DAB staining. This data demonstrates the use of the CA5B Antibody (C-term) for immunohistochemistry. Clinical relevance has not been evaluated.