



Datasheet for ABIN652316
anti-KRT9 antibody (AA 302-331)



[Go to Product page](#)

3 Images

Overview

Quantity:	400 µL
Target:	KRT9
Binding Specificity:	AA 302-331
Reactivity:	Human
Host:	Rabbit
Clonality:	Polyclonal
Conjugate:	This KRT9 antibody is un-conjugated
Application:	Western Blotting (WB), Flow Cytometry (FACS), Immunohistochemistry (Paraffin-embedded Sections) (IHC (p))

Product Details

Immunogen:	This KRT9 antibody is generated from rabbits immunized with a KLH conjugated synthetic peptide between 302-331 amino acids from the Central region of human KRT9.
Clone:	RB18418
Isotype:	Ig Fraction
Purification:	This antibody is purified through a protein A column, followed by peptide affinity purification.

Target Details

Target:	KRT9
Alternative Name:	KRT9 (KRT9 Products)

Target Details

Background: KRT9 is the type I keratin 9, an intermediate filament chain expressed only in the terminally differentiated epidermis of palms and soles. Mutations in this protein cause epidermolytic palmoplantar keratoderma.

Molecular Weight: 62064

Gene ID: 3857

NCBI Accession: [NP_000217](#)

UniProt: [P35527](#)

Application Details

Application Notes: WB: 1:1000. IHC-P: 1:50~100. FC: 1:10~50

Restrictions: For Research Use only

Handling

Format: Liquid

Buffer: Purified polyclonal antibody supplied in PBS with 0.09 % (W/V) sodium azide.

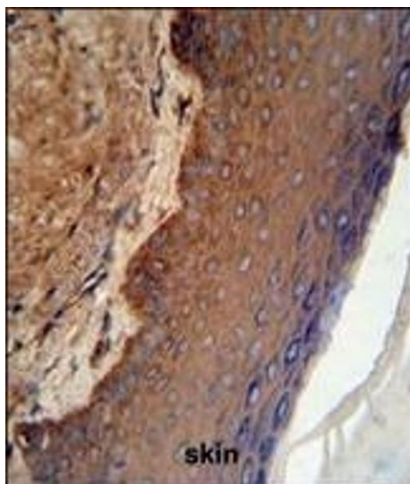
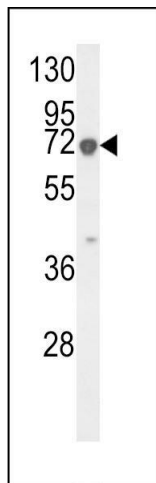
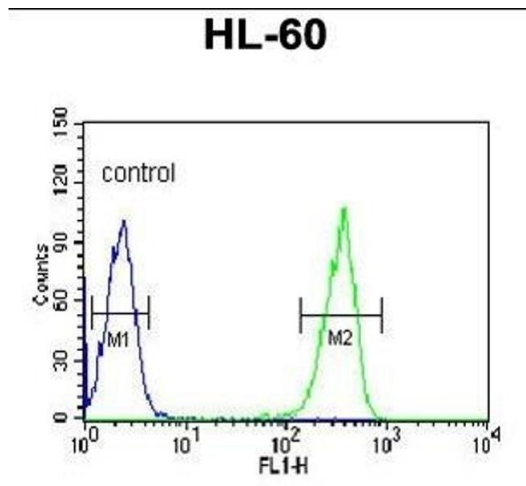
Preservative: Sodium azide

Precaution of Use: This product contains Sodium azide: a POISONOUS AND HAZARDOUS SUBSTANCE which should be handled by trained staff only.

Storage: 4 °C, -20 °C

Storage Comment: Maintain refrigerated at 2-8 °C for up to 6 months. For long term storage store at -20 °C in small aliquots to prevent freeze-thaw cycles.

Expiry Date: 6 months



Flow Cytometry

Image 1. KRT9 Antibody (Center) (ABIN652316 and ABIN2841447) flow cytometric analysis of HL-60 cells (right histogram) compared to a negative control cell (left histogram). FITC-conjugated goat-anti-rabbit secondary antibodies were used for the analysis.

Western Blotting

Image 2. Western blot analysis of KRT9 Antibody (Center) (ABIN652316 and ABIN2841447) in HL-60 cell line lysates (35 µg/lane). KRT9 (arrow) was detected using the purified Pab.

Immunohistochemistry (Paraffin-embedded Sections)

Image 3. KRT9 Antibody (Center) (ABIN652316 and ABIN2841447) IHC analysis in formalin fixed and paraffin embedded skin tissue followed by peroxidase conjugation of the secondary antibody and DAB staining. This data demonstrates the use of the KRT9 Antibody (Center) for immunohistochemistry. Clinical relevance has not been evaluated.