

Datasheet for ABIN652317
anti-PLG antibody (N-Term)



[Go to Product page](#)

1 Image

Overview

Quantity:	400 µL
Target:	PLG
Binding Specificity:	AA 150-175, N-Term
Reactivity:	Human
Host:	Rabbit
Clonality:	Polyclonal
Conjugate:	This PLG antibody is un-conjugated
Application:	Western Blotting (WB)

Product Details

Immunogen:	This PLG antibody is generated from rabbits immunized with a KLH conjugated synthetic peptide between 150-175 amino acids from the N-terminal region of human PLG.
Clone:	RB18475
Isotype:	Ig Fraction
Purification:	This antibody is prepared by Saturated Ammonium Sulfate (SAS) precipitation followed by dialysis against PBS.

Target Details

Target:	PLG
Alternative Name:	PLG (PLG Products)

Target Details

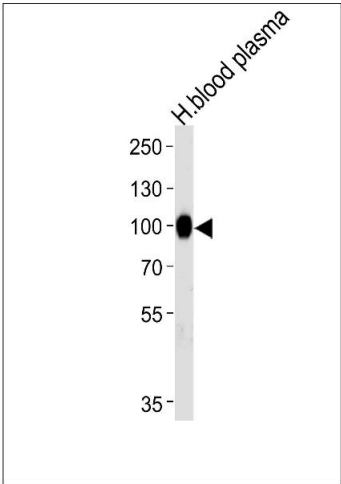
Background:	PLG is a circulating zymogen that is converted to the active enzyme plasmin by cleavage of the peptide bond between arg560 and val561, which is mediated by urokinase and tissue plasminogen activator. The main function of this protein is to dissolve fibrin clots. The protein, like trypsin, belongs to the family of serine proteinases.
Molecular Weight:	90569
Gene ID:	5340
NCBI Accession:	NP_000292
UniProt:	P00747
Pathways:	Complement System , Lipid Metabolism

Application Details

Application Notes:	WB: 1:1000
Restrictions:	For Research Use only

Handling

Format:	Liquid
Buffer:	Purified polyclonal antibody supplied in PBS with 0.09 % (W/V) sodium azide.
Preservative:	Sodium azide
Precaution of Use:	This product contains Sodium azide: a POISONOUS AND HAZARDOUS SUBSTANCE which should be handled by trained staff only.
Storage:	4 °C,-20 °C
Storage Comment:	Maintain refrigerated at 2-8 °C for up to 6 months. For long term storage store at -20 °C in small aliquots to prevent freeze-thaw cycles.
Expiry Date:	6 months



Western Blotting

Image 1. Western blot analysis of lysate from human blood plasma tissue lysate, using PLG Antibody (N-term) (ABIN652317 and ABIN2841448). (ABIN652317 and ABIN2841448) was diluted at 1:1000 at each lane. A goat anti-rabbit IgG H&L(HRP) at 1:5000 dilution was used as the secondary antibody. Lysate at 35 µg per lane.