



[Go to Product page](#)

Datasheet for ABIN652338

anti-SPRY4 antibody (AA 26-56)

3 Images

Overview

Quantity:	400 µL
Target:	SPRY4
Binding Specificity:	AA 26-56
Reactivity:	Human
Host:	Rabbit
Clonality:	Polyclonal
Conjugate:	This SPRY4 antibody is un-conjugated
Application:	Western Blotting (WB), Flow Cytometry (FACS), Immunohistochemistry (Paraffin-embedded Sections) (IHC (p))

Product Details

Immunogen:	This SPRY4 antibody is generated from rabbits immunized with a KLH conjugated synthetic peptide between 26-56 amino acids from human SPRY4.
Clone:	RB15585
Isotype:	Ig Fraction
Purification:	This antibody is purified through a protein A column, followed by peptide affinity purification.

Target Details

Target:	SPRY4
Alternative Name:	SPRY4 (SPRY4 Products)

Target Details

Background: SPRY4 is an inhibitor of the receptor-transduced mitogen-activated protein kinase (MAPK) signaling pathway. The protein is positioned upstream of RAS activation and impairs the formation of active GTP-RAS.

Molecular Weight: 32541

Gene ID: 81848

NCBI Accession: [NP_001120968](#), [NP_112226](#)

UniProt: [Q9C004](#)

Application Details

Application Notes: WB: 1:1000. IHC-P: 1:10~50. FC: 1:10~50

Restrictions: For Research Use only

Handling

Format: Liquid

Buffer: Purified polyclonal antibody supplied in PBS with 0.09 % (W/V) sodium azide.

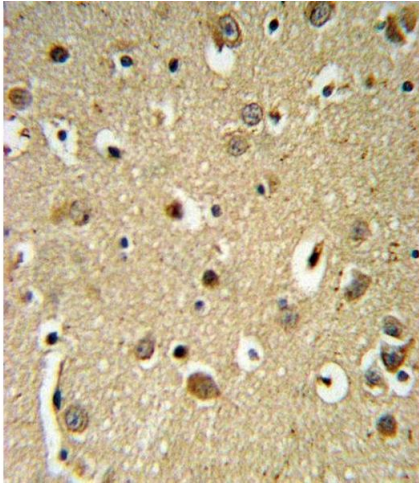
Preservative: Sodium azide

Precaution of Use: This product contains Sodium azide: a POISONOUS AND HAZARDOUS SUBSTANCE which should be handled by trained staff only.

Storage: 4 °C, -20 °C

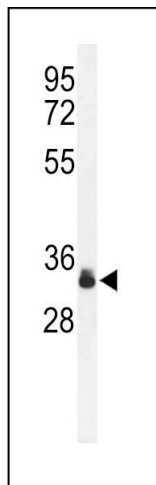
Storage Comment: Maintain refrigerated at 2-8 °C for up to 6 months. For long term storage store at -20 °C in small aliquots to prevent freeze-thaw cycles.

Expiry Date: 6 months



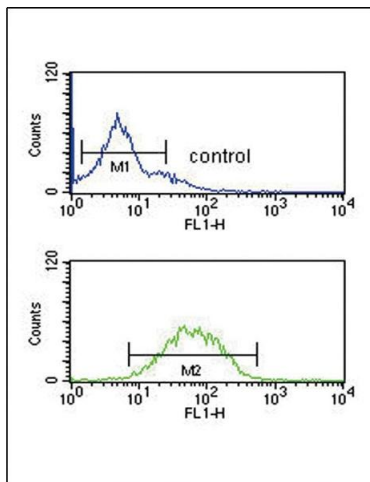
Immunohistochemistry (Paraffin-embedded Sections)

Image 1. SPRY4-Y75 Antibody (ABIN652338 and ABIN2841560) IHC analysis in formalin fixed and paraffin embedded brain tissue followed by peroxidase conjugation of the secondary antibody and DAB staining. This data demonstrates the use of the SPRY4-Y75 Antibody for immunohistochemistry. Clinical relevance has not been evaluated.



Western Blotting

Image 2. Western blot analysis of Phospho-SPRY4-Y75.ctrl (ABIN652338 and ABIN2841560) in K562 cell line lysates (35 µg/lane). SPRY4 (arrow) was detected using the purified Pab.



Flow Cytometry

Image 3. SPRY4-Y75 Antibody (ABIN652338 and ABIN2841560) flow cytometric analysis of K562 cells (bottom histogram) compared to a negative control cell (top histogram). FITC-conjugated goat-anti-rabbit secondary antibodies were used for the analysis.