

Datasheet for ABIN652340
anti-CYP2J2 antibody (N-Term)

3 Images

[Go to Product page](#)

Overview

Quantity:	400 µL
Target:	CYP2J2
Binding Specificity:	AA 96-124, N-Term
Reactivity:	Human
Host:	Rabbit
Clonality:	Polyclonal
Conjugate:	This CYP2J2 antibody is un-conjugated
Application:	Western Blotting (WB), Immunohistochemistry (Paraffin-embedded Sections) (IHC (p)), Flow Cytometry (FACS)

Product Details

Immunogen:	This CYP2J2 antibody is generated from rabbits immunized with a KLH conjugated synthetic peptide between 96-124 amino acids from the N-terminal region of human CYP2J2.
Clone:	RB15781
Isotype:	Ig Fraction
Purification:	This antibody is prepared by Saturated Ammonium Sulfate (SAS) precipitation followed by dialysis against PBS.

Target Details

Target:	CYP2J2
Alternative Name:	CYP2J2 (CYP2J2 Products)

Target Details

Background: CYP2J2 is a member of the cytochrome P450 superfamily of enzymes. The cytochrome P450 proteins are monooxygenases which catalyze many reactions involved in drug metabolism and synthesis of cholesterol, steroids and other lipids. This protein localizes to the endoplasmic reticulum and is thought to be the predominant enzyme responsible for epoxidation of endogenous arachidonic acid in cardiac tissue.

Molecular Weight: 57611

Gene ID: 1573

NCBI Accession: [NP_000766](#)

UniProt: [P51589](#)

Application Details

Application Notes: WB: 1:1000. IHC-P: 1:10~50. FC: 1:10~50

Restrictions: For Research Use only

Handling

Format: Liquid

Buffer: Purified polyclonal antibody supplied in PBS with 0.09 % (W/V) sodium azide.

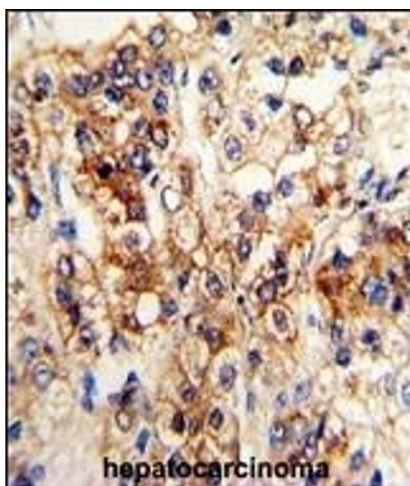
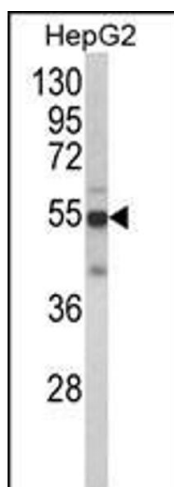
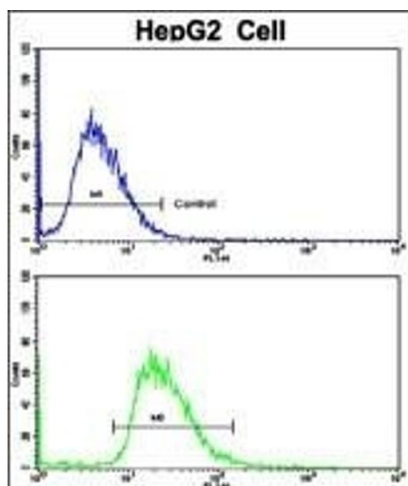
Preservative: Sodium azide

Precaution of Use: This product contains Sodium azide: a POISONOUS AND HAZARDOUS SUBSTANCE which should be handled by trained staff only.

Storage: 4 °C,-20 °C

Storage Comment: Maintain refrigerated at 2-8 °C for up to 6 months. For long term storage store at -20 °C in small aliquots to prevent freeze-thaw cycles.

Expiry Date: 6 months



Flow Cytometry

Image 1. Flow cytometric analysis of HepG2 cells using CYP2J2 Antibody (N-term)(bottom histogram) compared to a negative control cell (top histogram). FITC-conjugated goat-anti-rabbit secondary antibodies were used for the analysis.

Western Blotting

Image 2. Western blot analysis of CYP2J2 Antibody (N-term) (ABIN652340 and ABIN2841564) in HepG2 cell line lysates (35 µg/lane). CYP2J2 (arrow) was detected using the purified Pab.

Immunohistochemistry (Paraffin-embedded Sections)

Image 3. Formalin-fixed and paraffin-embedded human hepatocarcinoma reacted with CYP2J2 Antibody (N-term), which was peroxidase-conjugated to the secondary antibody, followed by DAB staining. This data demonstrates the use of this antibody for immunohistochemistry, clinical relevance has not been evaluated.