

Datasheet for ABIN652341
anti-DDX39 antibody (AA 250-277)[Go to Product page](#)

2 Images

Overview

Quantity:	400 µL
Target:	DDX39
Binding Specificity:	AA 250-277
Reactivity:	Human
Host:	Rabbit
Clonality:	Polyclonal
Conjugate:	This DDX39 antibody is un-conjugated
Application:	Western Blotting (WB)

Product Details

Immunogen:	This DDX39 antibody is generated from rabbits immunized with a KLH conjugated synthetic peptide between 250-277 amino acids from the Central region of human DDX39.
Clone:	RB17938
Isotype:	Ig Fraction
Predicted Reactivity:	M, Rat
Purification:	This antibody is prepared by Saturated Ammonium Sulfate (SAS) precipitation followed by dialysis against PBS.

Target Details

Target:	DDX39
---------	-------

Target Details

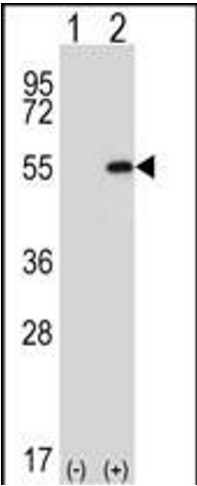
Alternative Name:	DDX39 (DDX39 Products)
Background:	DDX39 is a member of the DEAD box protein family. These proteins are characterized by the conserved motif Asp-Glu-Ala-Asp (DEAD) and are putative RNA helicases. They are implicated in a number of cellular processes involving alteration of RNA secondary structure, such as translation initiation, nuclear and mitochondrial splicing, and ribosome and spliceosome assembly. Based on their distribution patterns, some members of the DEAD box protein family are believed to be involved in embryogenesis, spermatogenesis, and cellular growth and division.
Molecular Weight:	49130
Gene ID:	10212
NCBI Accession:	NP_005795
UniProt:	O00148

Application Details

Application Notes:	WB: 1:1000. WB: 1:1000
Restrictions:	For Research Use only

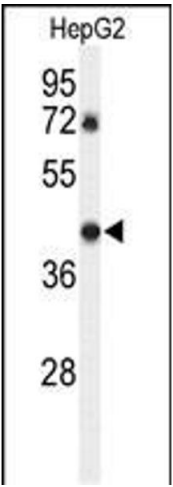
Handling

Format:	Liquid
Buffer:	Purified polyclonal antibody supplied in PBS with 0.09 % (W/V) sodium azide.
Preservative:	Sodium azide
Precaution of Use:	This product contains Sodium azide: a POISONOUS AND HAZARDOUS SUBSTANCE which should be handled by trained staff only.
Storage:	4 °C,-20 °C
Storage Comment:	Maintain refrigerated at 2-8 °C for up to 6 months. For long term storage store at -20 °C in small aliquots to prevent freeze-thaw cycles.
Expiry Date:	6 months



Western Blotting

Image 1. Western blot analysis of DDX39 (arrow) using rabbit polyclonal DDX39 Antibody (Center) (ABIN652341 and ABIN2841566). 293 cell lysates (2 µg/lane) either nontransfected (Lane 1) or transiently transfected (Lane 2) with the DDX39 gene.



Western Blotting

Image 2. Western blot analysis of DDX39 Antibody (Center) (ABIN652341 and ABIN2841566) in HepG2 cell line lysates (35 µg/lane). DDX39 (arrow) was detected using the purified Pab.