

Datasheet for ABIN652346  
**anti-Arylsulfatase B antibody (AA 235-266)**[Go to Product page](#)

## 2 Images

## Overview

Quantity:	400 µL
Target:	Arylsulfatase B (ARSB)
Binding Specificity:	AA 235-266
Reactivity:	Human
Host:	Rabbit
Clonality:	Polyclonal
Conjugate:	This Arylsulfatase B antibody is un-conjugated
Application:	Western Blotting (WB)

## Product Details

Immunogen:	This ARSB antibody is generated from rabbits immunized with a KLH conjugated synthetic peptide between 235-266 amino acids from the Central region of human ARSB.
Clone:	RB18352
Isotype:	Ig Fraction
Purification:	This antibody is purified through a protein A column, followed by peptide affinity purification.

## Target Details

Target:	Arylsulfatase B (ARSB)
Alternative Name:	ARSB ( <a href="#">ARSB Products</a> )
Background:	ARSB belongs to the sulfatase family. The arylsulfatase B homodimer hydrolyzes sulfate

## Target Details

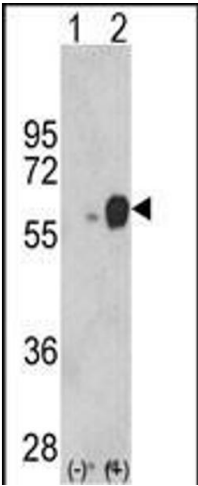
	groups of N-Acetyl-D-galactosamine, chondroitin sulfate, and dermatan sulfate. The protein is targetted to the lysozyme. Mucopolysaccharidosis type VI is an autosomal recessive lysosomal storage disorder resulting from a deficiency of arylsulfatase B.
Molecular Weight:	59687
Gene ID:	411
NCBI Accession:	<a href="#">NP_000037</a> , <a href="#">NP_942002</a>
UniProt:	<a href="#">P15848</a>
Pathways:	<a href="#">Glycosaminoglycan Metabolic Process</a>

## Application Details

Application Notes:	WB: 1:1000. WB: 1:1000
Restrictions:	For Research Use only

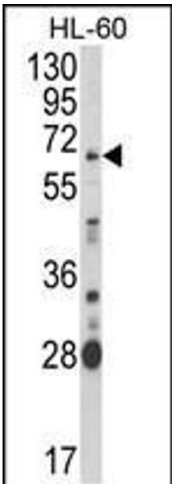
## Handling

Format:	Liquid
Buffer:	Purified polyclonal antibody supplied in PBS with 0.09 % (W/V) sodium azide.
Preservative:	Sodium azide
Precaution of Use:	This product contains Sodium azide: a POISONOUS AND HAZARDOUS SUBSTANCE which should be handled by trained staff only.
Storage:	4 °C,-20 °C
Storage Comment:	Maintain refrigerated at 2-8 °C for up to 6 months. For long term storage store at -20 °C in small aliquots to prevent freeze-thaw cycles.
Expiry Date:	6 months



#### Western Blotting

**Image 1.** Western blot analysis of ARSB (arrow) using rabbit polyclonal ARSB Antibody (Center) (ABIN652346 and ABIN2841582). 293 cell lysates (2 µg/lane) either nontransfected (Lane 1) or transiently transfected with the ARSB gene (Lane 2) (Origene Technologies).



#### Western Blotting

**Image 2.** Western blot analysis of ARSB Antibody (Center) (ABIN652346 and ABIN2841582) in HL-60 cell line lysates (35 µg/lane). ARSB (arrow) was detected using the purified Pab.