

Datasheet for ABIN652364

anti-CSF1R antibody

3 Images

[Go to Product page](#)

Overview

Quantity:	400 µL
Target:	CSF1R
Reactivity:	Human
Host:	Rabbit
Clonality:	Polyclonal
Conjugate:	This CSF1R antibody is un-conjugated
Application:	Western Blotting (WB), Flow Cytometry (FACS), Immunofluorescence (IF)

Product Details

Immunogen:	This CSF1R antibody is generated from rabbits immunized with CSF1R recombinant protein.
Clone:	RB22549
Isotype:	Ig Fraction
Purification:	This antibody is purified through a protein A column, followed by peptide affinity purification.

Target Details

Target:	CSF1R
Alternative Name:	CSF1R (CSF1R Products)
Background:	CSF1R is the receptor for colony stimulating factor 1, a cytokine which controls the production, differentiation, and function of macrophages. This receptor mediates most if not all of the biological effects of this cytokine. Ligand binding activates the receptor kinase through a process of oligomerization and transphosphorylation. The encoded protein is a tyrosine kinase

Target Details

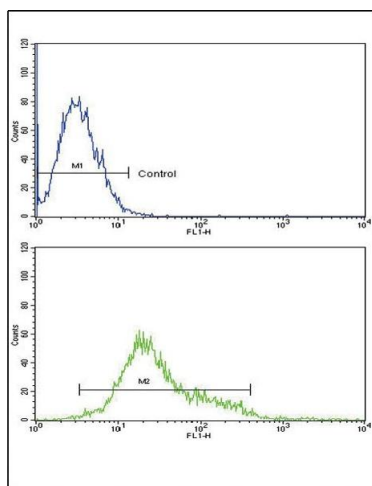
	transmembrane receptor and member of the CSF1/PDGF receptor family of tyrosine-protein kinases.
Molecular Weight:	107984
Gene ID:	1436
NCBI Accession:	NP_005202
UniProt:	P07333
Pathways:	RTK Signaling , Inositol Metabolic Process , Cell-Cell Junction Organization

Application Details

Application Notes:	IF: 1:10~50. WB: 1:2000. FC: 1:10~50
Restrictions:	For Research Use only

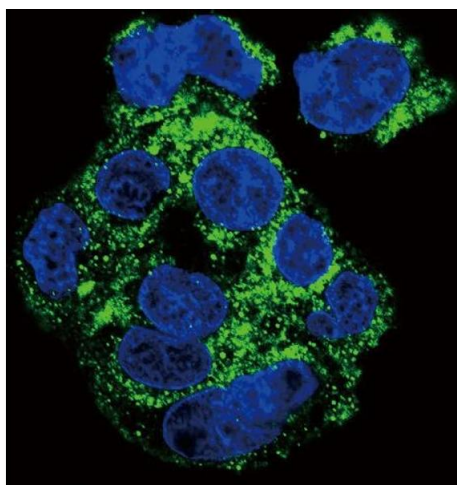
Handling

Format:	Liquid
Buffer:	Purified polyclonal antibody supplied in PBS with 0.09 % (W/V) sodium azide.
Preservative:	Sodium azide
Precaution of Use:	This product contains Sodium azide: a POISONOUS AND HAZARDOUS SUBSTANCE which should be handled by trained staff only.
Storage:	4 °C, -20 °C
Storage Comment:	Maintain refrigerated at 2-8 °C for up to 6 months. For long term storage store at -20 °C in small aliquots to prevent freeze-thaw cycles.
Expiry Date:	6 months



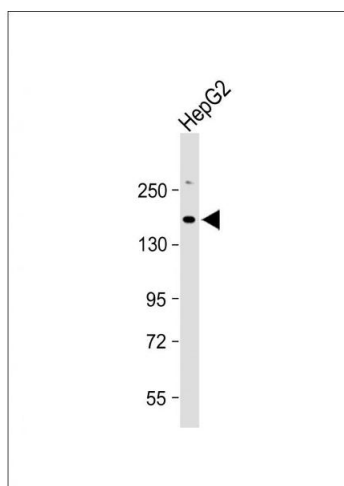
Flow Cytometry

Image 1. CSF1R Antibody (ABIN652364 and ABIN2841700) flow cytometric analysis of k562 cells (bottom histogram) compared to a negative control (top histogram). FITC-conjugated goat-anti-rabbit secondary antibodies were used for the analysis.



Immunofluorescence

Image 2. Confocal immunofluorescent analysis of CSF1R Antibody (ABIN652364 and ABIN2841700) with HepG2 cell followed by Alexa Fluor 488-conjugated goat anti-rabbit IgG (green). DAPI was used to stain the cell nuclear (blue).



Western Blotting

Image 3. Anti-CSF1R Antibody at 1:2000 dilution + HepG2 whole cell lysate. Lysates/proteins at 20 µg per lane. Secondary Goat Anti-Rabbit IgG, (H+L), Peroxidase conjugated at 1/10000 dilution. Predicted band size : 108 kDa. Blocking/Dilution buffer: 5 % NFDM/TBST.