

Datasheet for ABIN652365  
**anti-EPH Receptor B3 antibody**

## 3 Images

[Go to Product page](#)

## Overview

Quantity:	400 µL
Target:	EPH Receptor B3 (EPHB3)
Reactivity:	Human, Mouse
Host:	Rabbit
Clonality:	Polyclonal
Conjugate:	This EPH Receptor B3 antibody is un-conjugated
Application:	Western Blotting (WB), Flow Cytometry (FACS)

## Product Details

Immunogen:	This EphB3 antibody is generated from rabbits immunized with EphB3 his fusion protein.
Clone:	RB16728
Isotype:	Ig Fraction
Purification:	This antibody is prepared by Saturated Ammonium Sulfate (SAS) precipitation followed by dialysis against PBS.

## Target Details

Target:	EPH Receptor B3 (EPHB3)
Alternative Name:	EphB3 ( <a href="#">EPHB3 Products</a> )
Background:	Ephrin receptors and their ligands, the ephrins, mediate numerous developmental processes, particularly in the nervous system. Based on their structures and sequence relationships, ephrins are divided into the ephrin-A (EFNA) class, which are anchored to the membrane by a

## Target Details

glycosylphosphatidylinositol linkage, and the ephrin-B (EFNB) class, which are transmembrane proteins. The Eph family of receptors are divided into 2 groups based on the similarity of their extracellular domain sequences and their affinities for binding ephrin-A and ephrin-B ligands. Ephrin receptors make up the largest subgroup of the receptor tyrosine kinase (RTK) family. EphB3, a member of the Tyr family of protein kinases, is a receptor for members of the ephrin-B family, it binds to both ephrin-B1 and -B2. Expression of this Type I membrane protein is ubiquitous. The protein contains putative domains for 2 fibronectin type III and 1 sterile alpha motif (SAM).

Molecular Weight: 110330

Gene ID: 2049

NCBI Accession: [NP\\_004434](#)

UniProt: [P54753](#)

Pathways: [RTK Signaling](#)

## Application Details

Application Notes: WB: 1:1000. WB: 1:1000. FC: 1:10~50

Restrictions: For Research Use only

## Handling

Format: Liquid

Buffer: Purified polyclonal antibody supplied in PBS with 0.09 % (W/V) sodium azide.

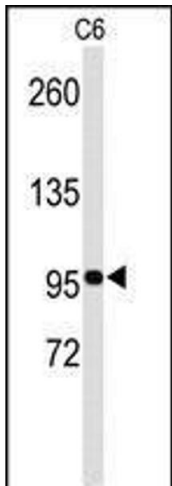
Preservative: Sodium azide

Precaution of Use: This product contains Sodium azide: a POISONOUS AND HAZARDOUS SUBSTANCE which should be handled by trained staff only.

Storage: 4 °C, -20 °C

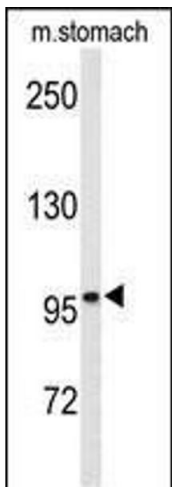
Storage Comment: Maintain refrigerated at 2-8 °C for up to 6 months. For long term storage store at -20 °C in small aliquots to prevent freeze-thaw cycles.

Expiry Date: 6 months



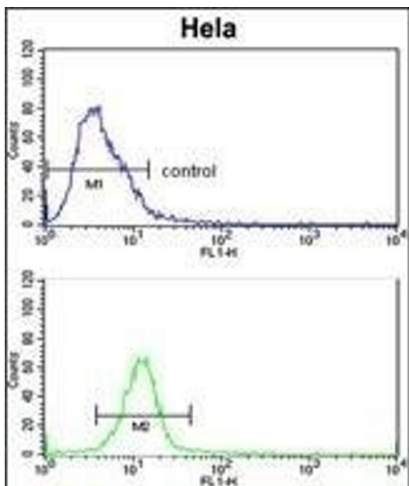
#### Western Blotting

**Image 1.** Western blot analysis of EphB3 Antibody (ABIN652365 and ABIN2841733) in C6 cell line lysates (35 µg/lane).EphB3 (arrow) was detected using the purified Pab



#### Western Blotting

**Image 2.** Western blot analysis of EphB3 Antibody (ABIN652365 and ABIN2841733) in mouse stomach tissue lysates (35 µg/lane).EphB3 (arrow) was detected using the purified Pab.



#### Flow Cytometry

**Image 3.** EphB3 Antibody (ABIN652365 and ABIN2841733) flow cytometric analysis of HeLa cells (bottom histogram) compared to a negative control cell (top histogram).FITC-conjugated goat-anti-rabbit secondary antibodies were used for the analysis.