

Datasheet for ABIN652374
anti-IGF1R antibody (N-Term)[Go to Product page](#)

4 Images

Overview

Quantity:	400 µL
Target:	IGF1R
Binding Specificity:	AA 51-77, N-Term
Reactivity:	Human
Host:	Rabbit
Clonality:	Polyclonal
Conjugate:	This IGF1R antibody is un-conjugated
Application:	Western Blotting (WB), Flow Cytometry (FACS), Immunofluorescence (IF), Immunohistochemistry (Paraffin-embedded Sections) (IHC (p))

Product Details

Immunogen:	This IGF1R antibody is generated from rabbits immunized with a KLH conjugated synthetic peptide between 51-77 amino acids from the N-terminal region of human IGF1R.
Clone:	RB15292
Isotype:	Ig Fraction
Predicted Reactivity:	M, Rat
Purification:	This antibody is prepared by Saturated Ammonium Sulfate (SAS) precipitation followed by dialysis against PBS.

Target Details

Target:	IGF1R
---------	-------

Target Details

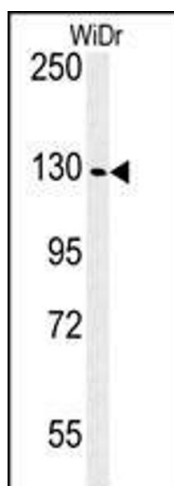
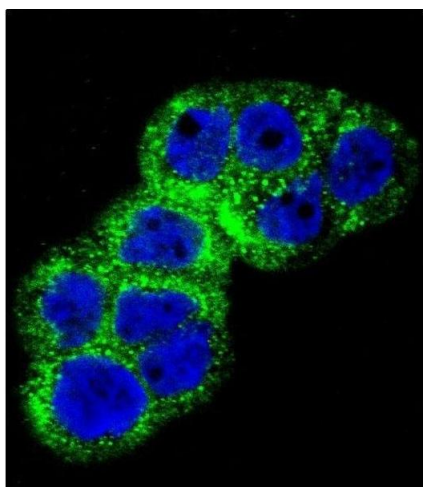
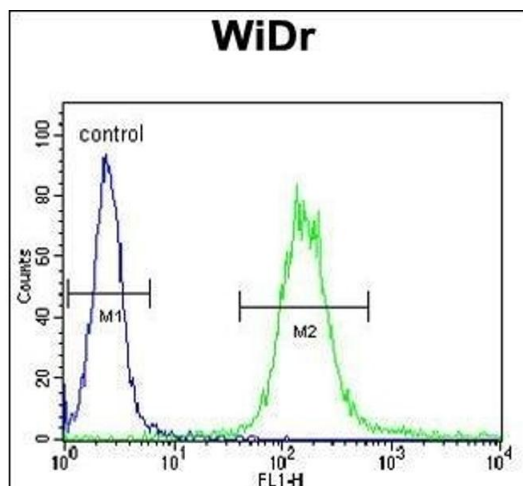
Alternative Name:	IGF1R (IGF1R Products)
Background:	The IGF1R receptor binds insulin-like growth factor with a high affinity and plays a critical role in transformation events. Cleavage of the precursor generates alpha and beta subunits. It is highly overexpressed in most malignant tissues where it functions as an anti-apoptotic agent by enhancing cell survival. The protein possess tyrosine kinase activity.
Molecular Weight:	154793
Gene ID:	3480
NCBI Accession:	NP_000866
UniProt:	P08069
Pathways:	RTK Signaling , Regulation of Hormone Metabolic Process , Regulation of Hormone Biosynthetic Process , Autophagy

Application Details

Application Notes:	IF: 1:10~50. WB: 1:1000. IHC-P: 1:50~100. FC: 1:10~50
Restrictions:	For Research Use only

Handling

Format:	Liquid
Buffer:	Purified polyclonal antibody supplied in PBS with 0.09 % (W/V) sodium azide.
Preservative:	Sodium azide
Precaution of Use:	This product contains Sodium azide: a POISONOUS AND HAZARDOUS SUBSTANCE which should be handled by trained staff only.
Storage:	4 °C,-20 °C
Storage Comment:	Maintain refrigerated at 2-8 °C for up to 6 months. For long term storage store at -20 °C in small aliquots to prevent freeze-thaw cycles.
Expiry Date:	6 months



Flow Cytometry

Image 1. IGF1R Antibody (N-term K66) (ABIN652374 and ABIN2841778) flow cytometric analysis of WiDr cells (right histogram) compared to a negative control (PBS alone) (left histogram). FITC-conjugated goat-anti-rabbit secondary antibodies were used for the analysis.

Immunofluorescence

Image 2. Confocal immunofluorescent analysis of IGF1R Antibody (N-term K66) (ABIN652374 and ABIN2841778) with WiDr cell followed by Alexa Fluor 488-conjugated goat anti-rabbit IgG (green). DAPI was used to stain the cell nuclear (blue).

Western Blotting

Image 3. Western blot analysis of IGF1R Antibody (N-term K66) (ABIN652374 and ABIN2841778) in WiDr cell line lysates (35 μ g/lane). IGF1R (arrow) was detected using the purified Pab.

Please check the [product details page](#) for more images. Overall 4 images are available for ABIN652374.