



Datasheet for ABIN652386  
**anti-SRPK1 antibody (C-Term)**



[Go to Product page](#)

3 Images

Overview

Quantity:	400 µL
Target:	SRPK1
Binding Specificity:	AA 538-567, C-Term
Reactivity:	Human
Host:	Rabbit
Clonality:	Polyclonal
Conjugate:	This SRPK1 antibody is un-conjugated
Application:	Western Blotting (WB), Flow Cytometry (FACS)

Product Details

Immunogen:	This SRPK1 antibody is generated from rabbits immunized with a KLH conjugated synthetic peptide between 538-567 amino acids from the C-terminal region of human SRPK1.
Clone:	RB9188
Isotype:	Ig Fraction
Purification:	This antibody is prepared by Saturated Ammonium Sulfate (SAS) precipitation followed by dialysis against PBS.

Target Details

Target:	SRPK1
Alternative Name:	SRPK1 ( <a href="#">SRPK1 Products</a> )

## Target Details

---

Background:	This gene encodes a serine/arginine protein kinase specific for the SR (serine/arginine-rich domain) family of splicing factors. The protein localizes to the nucleus and the cytoplasm. It is thought to play a role in regulation of both constitutive and alternative splicing by regulating intracellular localization of splicing factors. A second alternatively spliced transcript variant for this gene has been described, but its full length nature has not been determined.
Molecular Weight:	74325
Gene ID:	6732
NCBI Accession:	<a href="#">NP_003128</a>
UniProt:	<a href="#">Q96SB4</a>
Pathways:	<a href="#">Toll-Like Receptors Cascades</a>

## Application Details

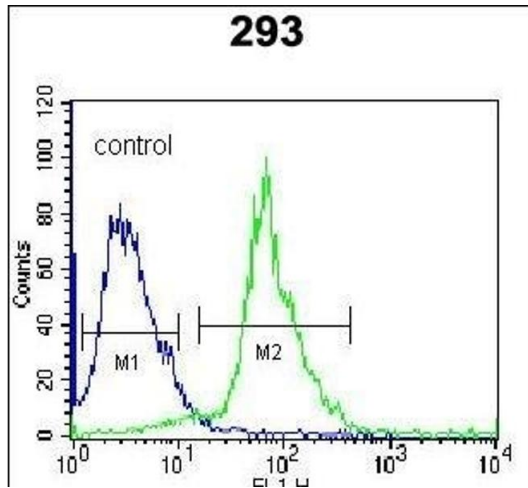
---

Application Notes:	WB: 1:2000. WB: 1:1000. FC: 1:10~50
Restrictions:	For Research Use only

## Handling

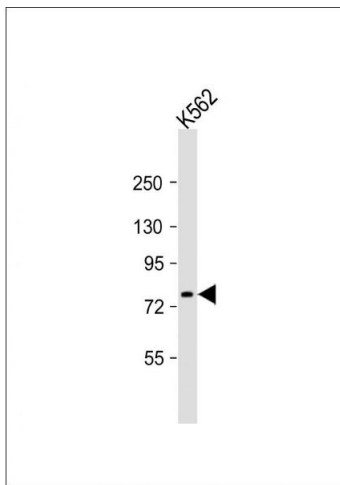
---

Format:	Liquid
Buffer:	Purified polyclonal antibody supplied in PBS with 0.09 % (W/V) sodium azide.
Preservative:	Sodium azide
Precaution of Use:	This product contains Sodium azide: a POISONOUS AND HAZARDOUS SUBSTANCE which should be handled by trained staff only.
Storage:	4 °C, -20 °C
Storage Comment:	Maintain refrigerated at 2-8 °C for up to 6 months. For long term storage store at -20 °C in small aliquots to prevent freeze-thaw cycles.
Expiry Date:	6 months



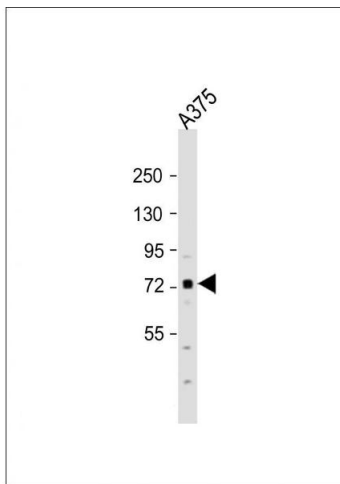
### Flow Cytometry

**Image 1.** SRPK1 Antibody (C-term) (ABIN652386 and ABIN2841866) flow cytometric analysis of 293 cells (right histogram) compared to a negative control cell (left histogram). FITC-conjugated goat-anti-rabbit secondary antibodies were used for the analysis.



### Western Blotting

**Image 2.** Anti-SRPK1 Antibody (N-term) at 1:2000 dilution + K562 whole cell lysate Lysates/proteins at 20 µg per lane. Secondary Goat Anti-Rabbit IgG, (H+L), Peroxidase conjugated at 1/10000 dilution. Predicted band size : 74 kDa. Blocking/Dilution buffer: 5 % NFDN/TBST.



### Western Blotting

**Image 3.** Anti-SRPK1 Antibody (N-term) at 1:1000 dilution + whole cell lysate Lysates/proteins at 20 µg per lane. Secondary Goat Anti-Rabbit IgG, (H+L), Peroxidase conjugated at 1/10000 dilution. Predicted band size : 74 kDa. Blocking/Dilution buffer: 5 % NFDN/TBST.