

Datasheet for ABIN652395
anti-PHLPP2 antibody (C-Term)

3 Images

[Go to Product page](#)

Overview

Quantity:	400 µL
Target:	PHLPP2
Binding Specificity:	AA 1295-1323, C-Term
Reactivity:	Human
Host:	Rabbit
Clonality:	Polyclonal
Conjugate:	This PHLPP2 antibody is un-conjugated
Application:	Western Blotting (WB), Immunohistochemistry (Paraffin-embedded Sections) (IHC (p)), Flow Cytometry (FACS)

Product Details

Immunogen:	This PHLPP2 antibody is generated from rabbits immunized with a KLH conjugated synthetic peptide between 1295-1323 amino acids from the C-terminal region of human PHLPP2.
Clone:	RB15007
Isotype:	Ig Fraction
Purification:	This antibody is prepared by Saturated Ammonium Sulfate (SAS) precipitation followed by dialysis against PBS.

Target Details

Target:	PHLPP2
Alternative Name:	PHLPP2 (PHLPP2 Products)

Target Details

Background: PHLPP2 is a protein phosphatase that specifically mediates dephosphorylation of 'Ser-473' of AKT1. This protein regulates the balance between cell survival and apoptosis through a cascade that primarily alters the function of transcription factors that regulate pro- and antiapoptotic genes. Dephosphorylation of 'Ser-473' of AKT1 triggers apoptosis and decrease cell proliferation. It also controls the phosphorylation of AKT3.

Molecular Weight: 146751

Gene ID: 23035

NCBI Accession: [NP_055835](#)

UniProt: [Q6ZVD8](#)

Pathways: [PI3K-Akt Signaling](#), [Fc-epsilon Receptor Signaling Pathway](#)

Application Details

Application Notes: WB: 1:1000. IHC-P: 1:50~100. FC: 1:10~50

Restrictions: For Research Use only

Handling

Format: Liquid

Buffer: Purified polyclonal antibody supplied in PBS with 0.09 % (W/V) sodium azide.

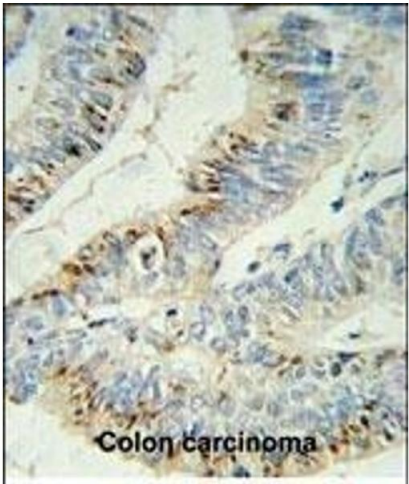
Preservative: Sodium azide

Precaution of Use: This product contains Sodium azide: a POISONOUS AND HAZARDOUS SUBSTANCE which should be handled by trained staff only.

Storage: 4 °C, -20 °C

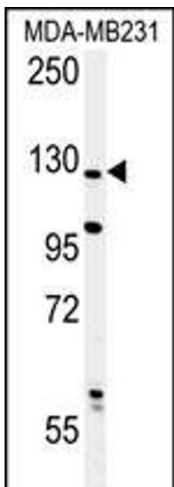
Storage Comment: Maintain refrigerated at 2-8 °C for up to 6 months. For long term storage store at -20 °C in small aliquots to prevent freeze-thaw cycles.

Expiry Date: 6 months



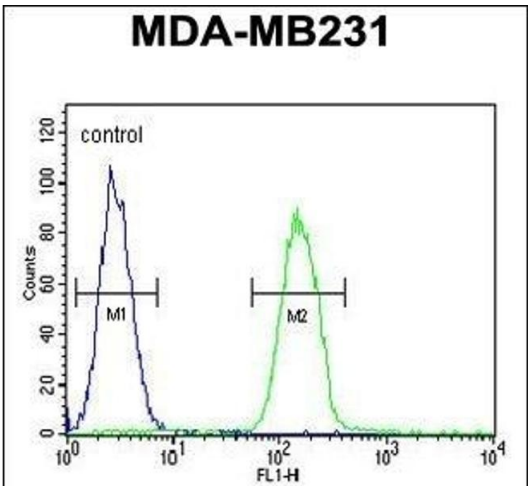
Immunohistochemistry (Paraffin-embedded Sections)

Image 1. PHL Antibody (C-term) (ABIN652395 and ABIN2841923) IHC analysis in formalin fixed and paraffin embedded colon carcinoma followed by peroxidase conjugation of the secondary antibody and DAB staining. This data demonstrates the use of the PHL Antibody (C-term) for immunohistochemistry. Clinical relevance has not been evaluated.



Western Blotting

Image 2. Western blot analysis of PHL Antibody (C-term) (ABIN652395 and ABIN2841923) in MDA-M cell line lysates (35 µg/lane). PHL (arrow) was detected using the purified Pab.



Flow Cytometry

Image 3. PHL Antibody (C-term) (ABIN652395 and ABIN2841923) flow cytometric analysis of MDA-M cells (right histogram) compared to a negative control cell (left histogram). FITC-conjugated goat-anti-rabbit secondary antibodies were used for the analysis.