

Datasheet for ABIN652404  
**anti-AAK1 antibody (N-Term)**[Go to Product page](#)

## 1 Image

## Overview

Quantity:	400 µL
Target:	AAK1
Binding Specificity:	AA 186-216, N-Term
Reactivity:	Human
Host:	Rabbit
Clonality:	Polyclonal
Conjugate:	This AAK1 antibody is un-conjugated
Application:	Western Blotting (WB)

## Product Details

Immunogen:	This AAK1 antibody is generated from rabbits immunized with a KLH conjugated synthetic peptide between 186-216 amino acids from the N-terminal region of human AAK1.
Clone:	RB16487
Isotype:	Ig Fraction
Predicted Reactivity:	B, Pig
Purification:	This antibody is prepared by Saturated Ammonium Sulfate (SAS) precipitation followed by dialysis against PBS.

## Target Details

Target:	AAK1
---------	------

## Target Details

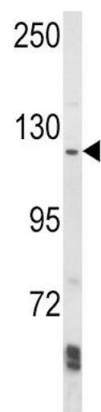
Alternative Name:	AAK1 ( <a href="#">AAK1 Products</a> )
Background:	Adaptor-related protein complex 2 (AP-2 complexes) functions during receptor-mediated endocytosis to trigger clathrin assembly, interact with membrane-bound receptors, and recruit endocytic accessory factors. AAK1 is a member of the SNF1 subfamily of Ser/Thr protein kinases. The protein interacts with and phosphorylates a subunit of the AP-2 complex, which promotes binding of AP-2 to sorting signals found in membrane-bound receptors and subsequent receptor endocytosis. Its kinase activity is stimulated by clathrin.
Molecular Weight:	103885
Gene ID:	22848
NCBI Accession:	<a href="#">NP_055726</a>
UniProt:	<a href="#">Q2M2I8</a>

## Application Details

Application Notes:	WB: 1:1000
Restrictions:	For Research Use only

## Handling

Format:	Liquid
Buffer:	Purified polyclonal antibody supplied in PBS with 0.09 % (W/V) sodium azide.
Preservative:	Sodium azide
Precaution of Use:	This product contains Sodium azide: a POISONOUS AND HAZARDOUS SUBSTANCE which should be handled by trained staff only.
Storage:	4 °C,-20 °C
Storage Comment:	Maintain refrigerated at 2-8 °C for up to 6 months. For long term storage store at -20 °C in small aliquots to prevent freeze-thaw cycles.
Expiry Date:	6 months



Western Blotting

**Image 1.** Western blot analysis of K1 Antibody (N-term) (ABIN652404 and ABIN2841978) in Ramos cell line lysates (35 µg/lane). K1 (arrow) was detected using the purified Pab.