

Datasheet for ABIN652417
anti-NFKBIA antibody (AA 12-41)[Go to Product page](#)

4 Images

Overview

Quantity:	400 µL
Target:	NFKBIA
Binding Specificity:	AA 12-41
Reactivity:	Human
Host:	Rabbit
Clonality:	Polyclonal
Conjugate:	This NFKBIA antibody is un-conjugated
Application:	Western Blotting (WB), Immunofluorescence (IF), Immunohistochemistry (Paraffin-embedded Sections) (IHC (p)), Flow Cytometry (FACS)

Product Details

Immunogen:	This NFKBIA antibody is generated from rabbits immunized with a KLH conjugated synthetic peptide between 12-41 amino acids from human NFKBIA.
Clone:	RB21911
Isotype:	Ig Fraction
Predicted Reactivity:	M, Pig
Purification:	This antibody is purified through a protein A column, followed by peptide affinity purification.

Target Details

Target:	NFKBIA
---------	--------

Target Details

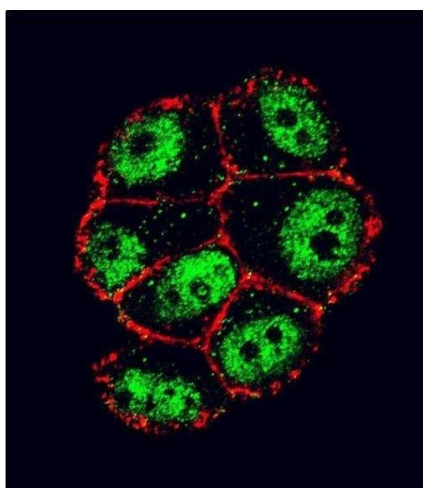
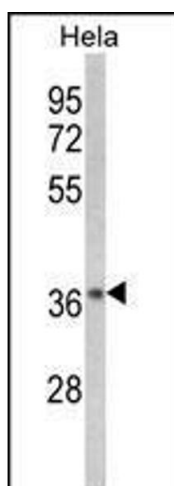
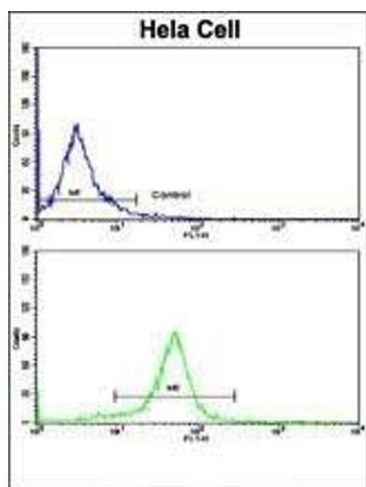
Alternative Name:	NFKBIA (NFKBIA Products)
Background:	NFKB1 or NFKB2 is bound to REL, RELA, or RELB to form the NFKB complex. The NFKB complex is inhibited by I-kappa-B proteins (NFKBIA or NFKBIB), which inactivate NF-kappa-B by trapping it in the cytoplasm. Phosphorylation of serine residues on the I-kappa-B proteins by kinases (IKBKA, IKBKB) marks them for destruction via the ubiquitination pathway, thereby allowing activation of the NF-kappa-B complex. Activated NFKB complex translocates into the nucleus and binds DNA at kappa-B-binding motifs such as 5-prime GGGRNNYYCC 3-prime or 5-prime HGGARNYYCC 3-prime (where H is A, C, or T, R is an A or G purine, and Y is a C or T pyrimidine).
Molecular Weight:	35609
Gene ID:	4792
NCBI Accession:	NP_065390
UniProt:	P25963
Pathways:	NF-kappaB Signaling , TCR Signaling , TLR Signaling , Fc-epsilon Receptor Signaling Pathway , Activation of Innate immune Response , Cellular Response to Molecule of Bacterial Origin , Maintenance of Protein Location , Hepatitis C , Protein targeting to Nucleus , Toll-Like Receptors Cascades , BCR Signaling

Application Details

Application Notes:	IF: 1:10~50. WB: 1:1000. IHC-P: 1:50~100. FC: 1:10~50
Restrictions:	For Research Use only

Handling

Format:	Liquid
Buffer:	Purified polyclonal antibody supplied in PBS with 0.09 % (W/V) sodium azide.
Preservative:	Sodium azide
Precaution of Use:	This product contains Sodium azide: a POISONOUS AND HAZARDOUS SUBSTANCE which should be handled by trained staff only.
Storage:	4 °C,-20 °C
Storage Comment:	Maintain refrigerated at 2-8 °C for up to 6 months. For long term storage store at -20 °C in small aliquots to prevent freeze-thaw cycles.



Flow Cytometry

Image 1. Flow cytometric analysis of hela cells using NFKBIA Antibody (S32/36)(bottom histogram) compared to a negative control cell (top histogram). FITC-conjugated goat-anti-rabbit secondary antibodies were used for the analysis.

Western Blotting

Image 2. Western blot analysis of NFKBIA-S32/36 (ABIN652417 and ABIN2842077) in HeLa cell line lysates (35 µg/lane). NFKBIA (arrow) was detected using the purified Pab.

Immunofluorescence

Image 3. Confocal immunofluorescent analysis of NFKBIA Antibody (S32/36) (ABIN652417 and ABIN2842077) with ZR-75-1 cell followed by Alexa Fluor 488-conjugated goat anti-rabbit IgG (green). Actin filaments have been labeled with Alexa Fluor 555 phalloidin (red).

Please check the [product details page](#) for more images. Overall 4 images are available for ABIN652417.