

Datasheet for ABIN652424
anti-RPS6KB2 antibody

3 Images

[Go to Product page](#)

Overview

Quantity:	400 µL
Target:	RPS6KB2
Reactivity:	Human
Host:	Rabbit
Clonality:	Polyclonal
Conjugate:	This RPS6KB2 antibody is un-conjugated
Application:	Western Blotting (WB), Flow Cytometry (FACS), Immunohistochemistry (Paraffin-embedded Sections) (IHC (p))

Product Details

Immunogen:	This RPS6KB2 antibody is generated from rabbits immunized with human RPS6KB2 recombinant protein.
Clone:	RB22726
Isotype:	Ig Fraction
Purification:	This antibody is purified through a protein A column, followed by peptide affinity purification.

Target Details

Target:	RPS6KB2
Alternative Name:	RPS6KB2 (RPS6KB2 Products)
Background:	RPS6KB2 is a member of the RSK (ribosomal S6 kinase) family of serine/threonine kinases. This kinase contains 2 nonidentical kinase catalytic domains and phosphorylates the S6

Target Details

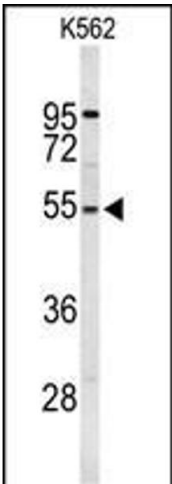
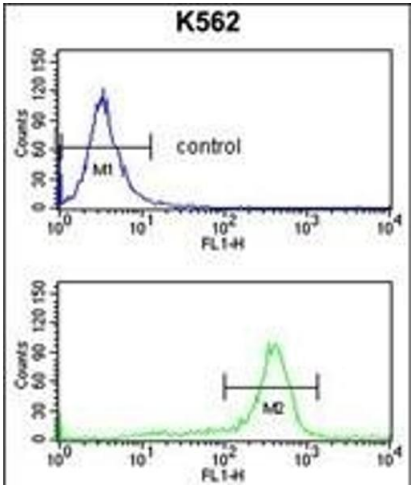
	ribosomal protein and eucaryotic translation initiation factor 4B. Phosphorylation of S6 leads to an increase in protein synthesis and cell proliferation.
Molecular Weight:	53455
Gene ID:	6199
NCBI Accession:	NP_003943
UniProt:	Q9UBS0
Pathways:	PI3K-Akt Signaling , RTK Signaling , AMPK Signaling , Fc-epsilon Receptor Signaling Pathway , EGFR Signaling Pathway , Neurotrophin Signaling Pathway

Application Details

Application Notes:	WB: 1:1000. IHC-P: 1:50~100. FC: 1:10~50
Restrictions:	For Research Use only

Handling

Format:	Liquid
Buffer:	Purified polyclonal antibody supplied in PBS with 0.09 % (W/V) sodium azide.
Preservative:	Sodium azide
Precaution of Use:	This product contains Sodium azide: a POISONOUS AND HAZARDOUS SUBSTANCE which should be handled by trained staff only.
Storage:	4 °C,-20 °C
Storage Comment:	Maintain refrigerated at 2-8 °C for up to 6 months. For long term storage store at -20 °C in small aliquots to prevent freeze-thaw cycles.
Expiry Date:	6 months



Flow Cytometry

Image 1. RPS6KB2 Antibody (ABIN652424 and ABIN2842096) flow cytometry analysis of K562 cells (bottom histogram) compared to a negative control cell (top histogram). FITC-conjugated goat-anti-rabbit secondary antibodies were used for the analysis.

Western Blotting

Image 2. Western blot analysis of RPS6KB2 Antibody (ABIN652424 and ABIN2842096) in K562 cell line lysates (35 µg/lane). RPS6KB2 (arrow) was detected using the purified Pab.

Immunohistochemistry (Paraffin-embedded Sections)

Image 3. Formalin-fixed and paraffin-embedded mouse brain tissue reacted with RPS6KB2 Antibody, which was peroxidase-conjugated to the secondary antibody, followed by DAB staining. This data demonstrates the use of this antibody for immunohistochemistry, clinical relevance has not been evaluated.