

Datasheet for ABIN652430
anti-ITPKB antibody (N-Term)[Go to Product page](#)

3 Images

Overview

Quantity:	400 µL
Target:	ITPKB
Binding Specificity:	AA 23-54, N-Term
Reactivity:	Human
Host:	Rabbit
Clonality:	Polyclonal
Conjugate:	This ITPKB antibody is un-conjugated
Application:	Western Blotting (WB), Flow Cytometry (FACS), Immunohistochemistry (Paraffin-embedded Sections) (IHC (p))

Product Details

Immunogen:	This ITPKB antibody is generated from rabbits immunized with a KLH conjugated synthetic peptide between 23-54 amino acids from the N-terminal region of human ITPKB.
Clone:	RB5362
Isotype:	Ig Fraction
Purification:	This antibody is prepared by Saturated Ammonium Sulfate (SAS) precipitation followed by dialysis against PBS.

Target Details

Target:	ITPKB
Alternative Name:	ITPKB (ITPKB Products)

Target Details

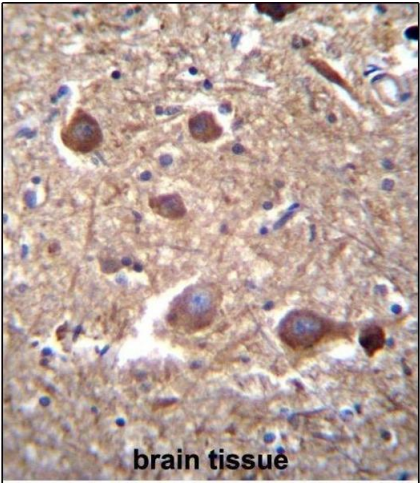
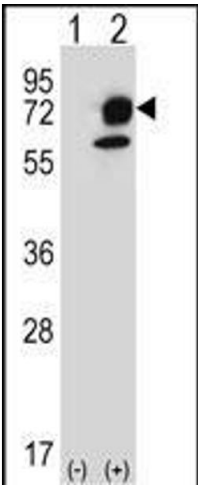
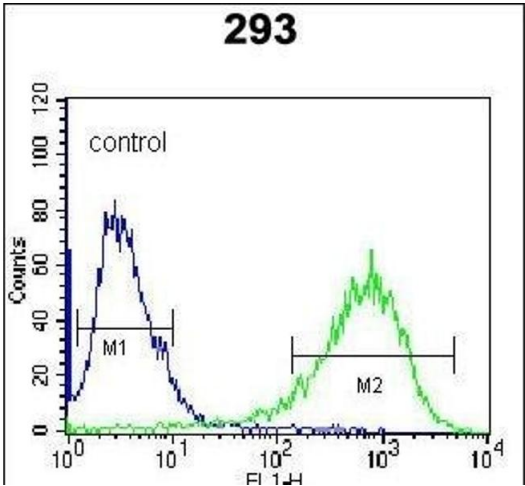
Background:	ITPKB regulates inositol phosphate metabolism by phosphorylation of second messenger inositol 1,4,5-trisphosphate to Ins(1,3,4,5)P4. The activity of this encoded protein is responsible for regulating the levels of a large number of inositol polyphosphates that are important in cellular signaling. Both calcium/calmodulin and protein phosphorylation mechanisms control its activity.
Molecular Weight:	102376
Gene ID:	3707
NCBI Accession:	NP_002212
UniProt:	P27987

Application Details

Application Notes:	WB: 1:1000. IHC-P: 1:10~50. FC: 1:10~50
Restrictions:	For Research Use only

Handling

Format:	Liquid
Buffer:	Purified polyclonal antibody supplied in PBS with 0.09 % (W/V) sodium azide.
Preservative:	Sodium azide
Precaution of Use:	This product contains Sodium azide: a POISONOUS AND HAZARDOUS SUBSTANCE which should be handled by trained staff only.
Storage:	4 °C,-20 °C
Storage Comment:	Maintain refrigerated at 2-8 °C for up to 6 months. For long term storage store at -20 °C in small aliquots to prevent freeze-thaw cycles.
Expiry Date:	6 months



Flow Cytometry

Image 1. ITPKB Antibody (N-term) (ABIN652430 and ABIN2842237) flow cytometric analysis of 293 cells (right histogram) compared to a negative control cell (left histogram).FITC-conjugated goat-anti-rabbit secondary antibodies were used for the analysis.

Western Blotting

Image 2. Western blot analysis of ITPKB (arrow) using rabbit polyclonal ITPKB Antibody (R38) (ABIN652430 and ABIN2842237). 293 cell lysates (2 µg/lane) either nontransfected (Lane 1) or transiently transfected (Lane 2) with the ITPKB gene.

Immunohistochemistry (Paraffin-embedded Sections)

Image 3. ITPKB Antibody (N-term) (ABIN652430 and ABIN2842237) immunohistochemistry analysis in formalin fixed and paraffin embedded human brain tissue followed by peroxidase conjugation of the secondary antibody and DAB staining.This data demonstrates the use of ITPKB Antibody (N-term) for immunohistochemistry. Clinical relevance has not been evaluated.