

Datasheet for ABIN652442  
**anti-SKP2 antibody (AA 156-185)**[Go to Product page](#)

## 2 Images

## Overview

Quantity:	400 µL
Target:	SKP2
Binding Specificity:	AA 156-185
Reactivity:	Human
Host:	Rabbit
Clonality:	Polyclonal
Conjugate:	This SKP2 antibody is un-conjugated
Application:	Western Blotting (WB), Flow Cytometry (FACS)

## Product Details

Immunogen:	This SKP2 antibody is generated from rabbits immunized with a KLH conjugated synthetic peptide between 156-185 amino acids from the Central region of human SKP2.
Clone:	RB19860
Isotype:	Ig Fraction
Purification:	This antibody is prepared by Saturated Ammonium Sulfate (SAS) precipitation followed by dialysis against PBS.

## Target Details

Target:	SKP2
Alternative Name:	SKP2 ( <a href="#">SKP2 Products</a> )

## Target Details

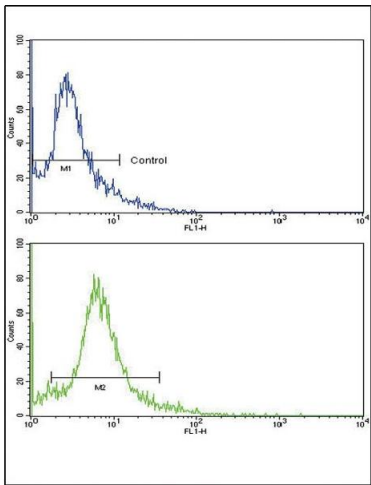
Background:	SKP2 is a member of the F-box protein family which is characterized by an approximately 40 amino acid motif, the F-box. The F-box proteins constitute one of the four subunits of ubiquitin protein ligase complex called SCFs (SKP1-cullin-F-box), which function in phosphorylation-dependent ubiquitination. The F-box proteins are divided into 3 classes: Fbws containing WD-40 domains, Fbls containing leucine-rich repeats, and Fbxs containing either different protein-protein interaction modules or no recognizable motifs. The protein encoded by this gene belongs to the Fbls class, in addition to an F-box, this protein contains 10 tandem leucine-rich repeats. This protein is an essential element of the cyclin A-CDK2 S-phase kinase. It specifically recognizes phosphorylated cyclin-dependent kinase inhibitor 1B (CDKN1B, also referred to as p27 or KIP1) predominantly in S phase and interacts with S-phase kinase-associated protein 1 (SKP1 or p19). In addition, this gene is established as a protooncogene causally involved in the pathogenesis of lymphomas.
Molecular Weight:	47761
Gene ID:	6502
NCBI Accession:	<a href="#">NP_001230049</a> , <a href="#">NP_005974</a> , <a href="#">NP_116026</a>
UniProt:	<a href="#">Q13309</a>
Pathways:	<a href="#">Mitotic G1-G1/S Phases</a>

## Application Details

Application Notes:	WB: 1:1000. FC: 1:10~50
Restrictions:	For Research Use only

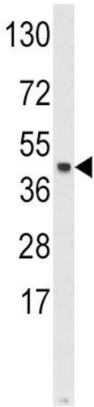
## Handling

Format:	Liquid
Buffer:	Purified polyclonal antibody supplied in PBS with 0.09 % (W/V) sodium azide.
Preservative:	Sodium azide
Precaution of Use:	This product contains Sodium azide: a POISONOUS AND HAZARDOUS SUBSTANCE which should be handled by trained staff only.
Storage:	4 °C,-20 °C
Storage Comment:	Maintain refrigerated at 2-8 °C for up to 6 months. For long term storage store at -20 °C in small aliquots to prevent freeze-thaw cycles.



### Flow Cytometry

**Image 1.** Flow cytometric analysis of hela cells using SKP2 Antibody (Center)(bottom histogram) compared to a negative control cell (top histogram). FITC-conjugated goat-anti-rabbit secondary antibodies were used for the analysis.



### Western Blotting

**Image 2.** Western blot analysis of SKP2 Antibody (Center) (ABIN652442 and ABIN2842300) in HeLa cell line lysates (35 µg/lane). SKP2 (arrow) was detected using the purified Pab.