



[Go to Product page](#)

Datasheet for ABIN652444  
**anti-TPT1 antibody (AA 85-113)**

3 Images

### Overview

Quantity:	400 µL
Target:	TPT1
Binding Specificity:	AA 85-113
Reactivity:	Human
Host:	Rabbit
Clonality:	Polyclonal
Conjugate:	This TPT1 antibody is un-conjugated
Application:	Western Blotting (WB), Immunohistochemistry (Paraffin-embedded Sections) (IHC (p)), Flow Cytometry (FACS)

### Product Details

Immunogen:	This TPT1 antibody is generated from rabbits immunized with a KLH conjugated synthetic peptide between 85-113 amino acids from the Central region of human TPT1.
Clone:	RB19910
Isotype:	Ig Fraction
Predicted Reactivity:	B, Pig, Rb
Purification:	This antibody is prepared by Saturated Ammonium Sulfate (SAS) precipitation followed by dialysis against PBS.

### Target Details

Target:	TPT1
---------	------

## Target Details

---

Alternative Name:	TPT1 ( <a href="#">TPT1 Products</a> )
Background:	TPT1 is involved in calcium binding and microtubule stabilization.
Molecular Weight:	19595
Gene ID:	7178
NCBI Accession:	<a href="#">NP_003286</a>
UniProt:	<a href="#">P13693</a>
Pathways:	<a href="#">Response to Water Deprivation</a> , <a href="#">Regulation of Cell Size</a> , <a href="#">Negative Regulation of intrinsic apoptotic Signaling</a>

## Application Details

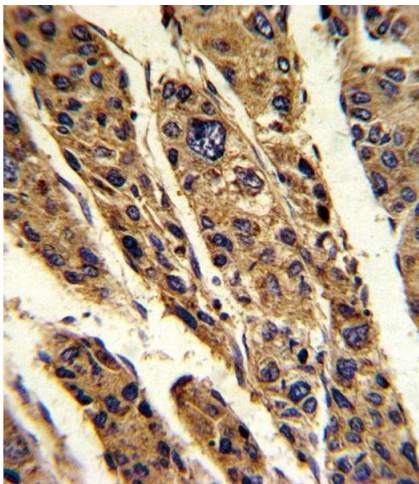
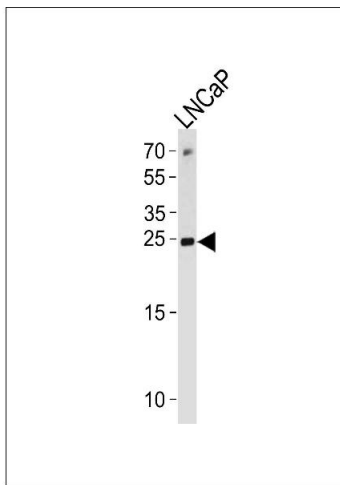
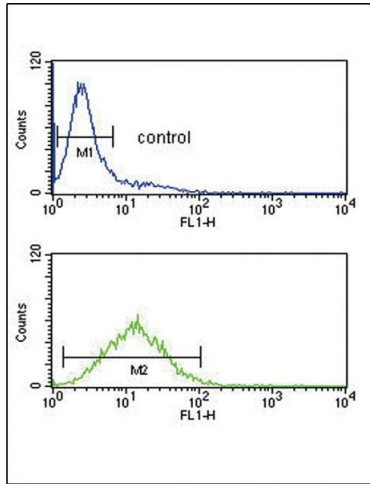
---

Application Notes:	WB: 1:1000. IHC-P: 1:10~50. FC: 1:10~50
Restrictions:	For Research Use only

## Handling

---

Format:	Liquid
Buffer:	Purified polyclonal antibody supplied in PBS with 0.09 % (W/V) sodium azide.
Preservative:	Sodium azide
Precaution of Use:	This product contains Sodium azide: a POISONOUS AND HAZARDOUS SUBSTANCE which should be handled by trained staff only.
Storage:	4 °C,-20 °C
Storage Comment:	Maintain refrigerated at 2-8 °C for up to 6 months. For long term storage store at -20 °C in small aliquots to prevent freeze-thaw cycles.
Expiry Date:	6 months



### Flow Cytometry

**Image 1.** TPT1 Antibody (Center) (ABIN652444 and ABIN2842301) flow cytometric analysis of Jurkat cells (bottom histogram) compared to a negative control cell (top histogram). FITC-conjugated goat-anti-rabbit secondary antibodies were used for the analysis.

### Western Blotting

**Image 2.** TPT1 Antibody (Center) (ABIN652444 and ABIN2842301) western blot analysis in LNCaP cell line lysates (35 µg/lane). This demonstrates the TPT1 antibody detected the TPT1 protein (arrow).

### Immunohistochemistry (Paraffin-embedded Sections)

**Image 3.** Formalin-fixed and paraffin-embedded human hepatocarcinoma reacted with TPT1 Antibody (Center), which was peroxidase-conjugated to the secondary antibody, followed by DAB staining. This data demonstrates the use of this antibody for immunohistochemistry, clinical relevance has not been evaluated.