

Datasheet for ABIN652448  
**anti-LTA antibody (AA 46-72)**

## 3 Images

[Go to Product page](#)

## Overview

Quantity:	400 µL
Target:	LTA
Binding Specificity:	AA 46-72
Reactivity:	Human
Host:	Rabbit
Clonality:	Polyclonal
Conjugate:	This LTA antibody is un-conjugated
Application:	Western Blotting (WB), Flow Cytometry (FACS), Immunohistochemistry (Paraffin-embedded Sections) (IHC (p))

## Product Details

Immunogen:	This LTA antibody is generated from rabbits immunized with a KLH conjugated synthetic peptide between 46-72 amino acids from the Central region of human LTA.
Clone:	RB21239
Isotype:	Ig Fraction
Purification:	This antibody is purified through a protein A column, followed by peptide affinity purification.

## Target Details

Target:	LTA
Alternative Name:	LTA ( <a href="#">LTA Products</a> )

## Target Details

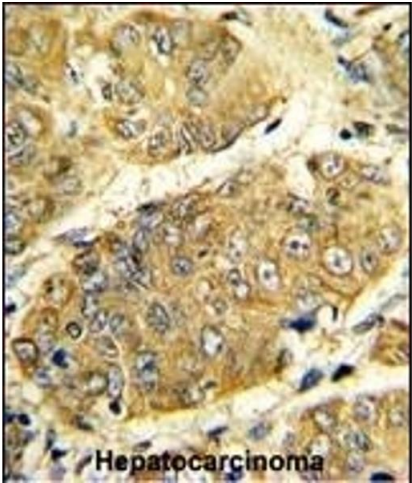
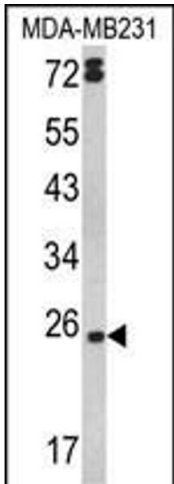
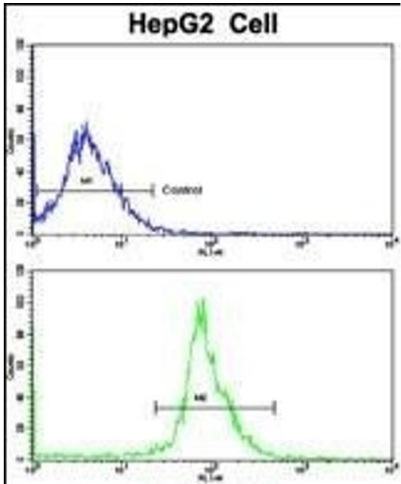
Target Type:	Chemical
Background:	LTA, a member of the tumor necrosis factor family, is a cytokine produced by lymphocytes. The protein is highly inducible, secreted, and forms heterotrimers with lymphotoxin-beta which anchor lymphotoxin-alpha to the cell surface. This protein also mediates a large variety of inflammatory, immunostimulatory, and antiviral responses, is involved in the formation of secondary lymphoid organs during development and plays a role in apoptosis.
Molecular Weight:	22297
Gene ID:	4049
NCBI Accession:	<a href="#">NP_000586</a> , <a href="#">NP_001153212</a>
UniProt:	<a href="#">P01374</a>
Pathways:	<a href="#">Regulation of Leukocyte Mediated Immunity</a> , <a href="#">Positive Regulation of Immune Effector Process</a>

## Application Details

Application Notes:	WB: 1:1000. IHC-P: 1:50~100. FC: 1:10~50
Restrictions:	For Research Use only

## Handling

Format:	Liquid
Buffer:	Purified polyclonal antibody supplied in PBS with 0.09 % (W/V) sodium azide.
Preservative:	Sodium azide
Precaution of Use:	This product contains Sodium azide: a POISONOUS AND HAZARDOUS SUBSTANCE which should be handled by trained staff only.
Storage:	4 °C,-20 °C
Storage Comment:	Maintain refrigerated at 2-8 °C for up to 6 months. For long term storage store at -20 °C in small aliquots to prevent freeze-thaw cycles.
Expiry Date:	6 months



### Flow Cytometry

**Image 1.** Flow cytometric analysis of HepG2 cells using LTA Antibody (Center)(bottom histogram) compared to a negative control cell (top histogram). FITC-conjugated goat-anti-rabbit secondary antibodies were used for the analysis.

### Western Blotting

**Image 2.** Western blot analysis of LTA Antibody (Center) (ABIN652448 and ABIN2842303) in MDA-M cell line lysates (35 µg/lane). LTA (arrow) was detected using the purified Pab.

### Immunohistochemistry (Paraffin-embedded Sections)

**Image 3.** Formalin-fixed and paraffin-embedded human hepatocarcinoma reacted with LTA Antibody (Center), which was peroxidase-conjugated to the secondary antibody, followed by DAB staining. This data demonstrates the use of this antibody for immunohistochemistry, clinical relevance has not been evaluated.