

Datasheet for ABIN652450
anti-SIL1 antibody (AA 99-126)

3 Images

[Go to Product page](#)

Overview

Quantity:	400 µL
Target:	SIL1
Binding Specificity:	AA 99-126
Reactivity:	Human, Mouse
Host:	Rabbit
Clonality:	Polyclonal
Conjugate:	This SIL1 antibody is un-conjugated
Application:	Western Blotting (WB), Immunohistochemistry (Paraffin-embedded Sections) (IHC (p)), Flow Cytometry (FACS)

Product Details

Immunogen:	This SIL1 antibody is generated from rabbits immunized with a KLH conjugated synthetic peptide between 99-126 amino acids from the Central region of human SIL1.
Clone:	RB21582
Isotype:	Ig Fraction
Purification:	This antibody is purified through a protein A column, followed by peptide affinity purification.

Target Details

Target:	SIL1
Alternative Name:	SIL1 (SIL1 Products)

Target Details

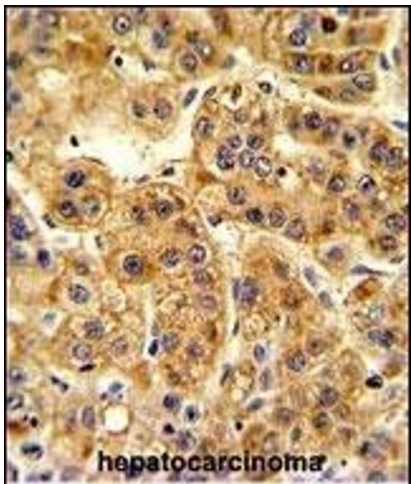
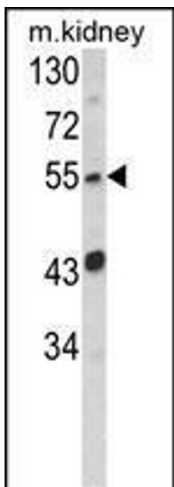
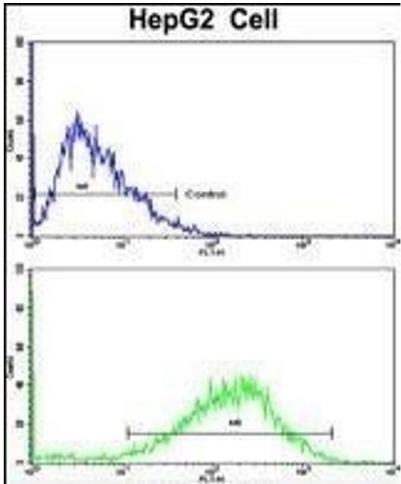
Background:	SIL1 IS a resident endoplasmic reticulum (ER), N-linked glycoprotein with an N-terminal ER targeting sequence, 2 putative N-glycosylation sites, and a C-terminal ER retention signal. This protein functions as a nucleotide exchange factor for another unfolded protein response protein.
Molecular Weight:	52085
Gene ID:	64374
NCBI Accession:	NP_001032722 , NP_071909
UniProt:	Q9H173
Pathways:	Unfolded Protein Response , SARS-CoV-2 Protein Interactome

Application Details

Application Notes:	WB: 1:1000. IHC-P: 1:50~100. FC: 1:10~50
Restrictions:	For Research Use only

Handling

Format:	Liquid
Buffer:	Purified polyclonal antibody supplied in PBS with 0.09 % (W/V) sodium azide.
Preservative:	Sodium azide
Precaution of Use:	This product contains Sodium azide: a POISONOUS AND HAZARDOUS SUBSTANCE which should be handled by trained staff only.
Storage:	4 °C,-20 °C
Storage Comment:	Maintain refrigerated at 2-8 °C for up to 6 months. For long term storage store at -20 °C in small aliquots to prevent freeze-thaw cycles.
Expiry Date:	6 months



Flow Cytometry

Image 1. Flow cytometric analysis of HepG2 cells using SIL1 Antibody (Center)(bottom histogram) compared to a negative control cell (top histogram). FITC-conjugated goat-anti-rabbit secondary antibodies were used for the analysis.

Western Blotting

Image 2. Western blot analysis of SIL1 Antibody (Center) (ABIN652450 and ABIN2842305) in mouse kidney tissue lysates (35 µg/lane).SIL1 (arrow) was detected using the purified Pab.

Immunohistochemistry (Paraffin-embedded Sections)

Image 3. Formalin-fixed and paraffin-embedded human hepatocarcinoma reacted with SIL1 Antibody (Center), which was peroxidase-conjugated to the secondary antibody, followed by DAB staining. This data demonstrates the use of this antibody for immunohistochemistry, clinical relevance has not been evaluated.