

Datasheet for ABIN652456
anti-HLA-E antibody (AA 108-135)

2 Images

[Go to Product page](#)

Overview

Quantity:	400 µL
Target:	HLA-E
Binding Specificity:	AA 108-135
Reactivity:	Human
Host:	Rabbit
Clonality:	Polyclonal
Conjugate:	This HLA-E antibody is un-conjugated
Application:	Western Blotting (WB)

Product Details

Immunogen:	This HLA-E antibody is generated from rabbits immunized with a KLH conjugated synthetic peptide between 108-135 amino acids from the Central region of human HLA-E.
Clone:	RB22054
Isotype:	Ig Fraction
Purification:	This antibody is purified through a protein A column, followed by peptide affinity purification.

Target Details

Target:	HLA-E
Alternative Name:	HLA-E (HLA-E Products)
Background:	HLA-E preferably binds to a peptide derived from the signal sequence of most HLA-A, -B, -C and

Target Details

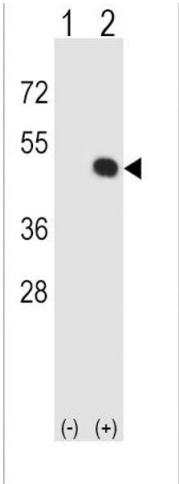
	-G molecules.
Molecular Weight:	40058
Gene ID:	3133
NCBI Accession:	NP_005507
UniProt:	P13747
Pathways:	Regulation of Leukocyte Mediated Immunity , Positive Regulation of Immune Effector Process , Human Leukocyte Antigen (HLA) in Adaptive Immune Response

Application Details

Application Notes:	WB: 1:1000. WB: 1:1000
Restrictions:	For Research Use only

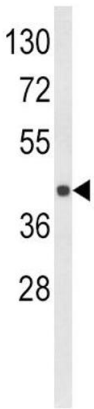
Handling

Format:	Liquid
Buffer:	Purified polyclonal antibody supplied in PBS with 0.09 % (W/V) sodium azide.
Preservative:	Sodium azide
Precaution of Use:	This product contains Sodium azide: a POISONOUS AND HAZARDOUS SUBSTANCE which should be handled by trained staff only.
Storage:	4 °C,-20 °C
Storage Comment:	Maintain refrigerated at 2-8 °C for up to 6 months. For long term storage store at -20 °C in small aliquots to prevent freeze-thaw cycles.
Expiry Date:	6 months



Western Blotting

Image 1. Western blot analysis of HLA-E (arrow) using rabbit polyclonal HLA-E Antibody (Center) (ABIN652456 and ABIN2842310). 293 cell lysates (2 µg/lane) either nontransfected (Lane 1) or transiently transfected (Lane 2) with the HLA-E gene.



Western Blotting

Image 2. Western blot analysis of HLA-E Antibody (Center) (ABIN652456 and ABIN2842310) in MDA-M cell line lysates (35 µg/lane). HLA-E (arrow) was detected using the purified Pab.