

Datasheet for ABIN652459  
**anti-ZFP36 antibody (AA 119-148)**[Go to Product page](#)

## 4 Images

## Overview

Quantity:	400 µL
Target:	ZFP36
Binding Specificity:	AA 119-148
Reactivity:	Human, Mouse
Host:	Rabbit
Clonality:	Polyclonal
Conjugate:	This ZFP36 antibody is un-conjugated
Application:	Western Blotting (WB), Flow Cytometry (FACS), Immunohistochemistry (Paraffin-embedded Sections) (IHC (p))

## Product Details

Immunogen:	This ZFP36 antibody is generated from rabbits immunized with a KLH conjugated synthetic peptide between 119-148 amino acids from the Central region of human ZFP36.
Clone:	RB19979
Isotype:	Ig Fraction
Purification:	This antibody is prepared by Saturated Ammonium Sulfate (SAS) precipitation followed by dialysis against PBS.

## Target Details

Target:	ZFP36
Alternative Name:	ZFP36 ( <a href="#">ZFP36 Products</a> )

## Target Details

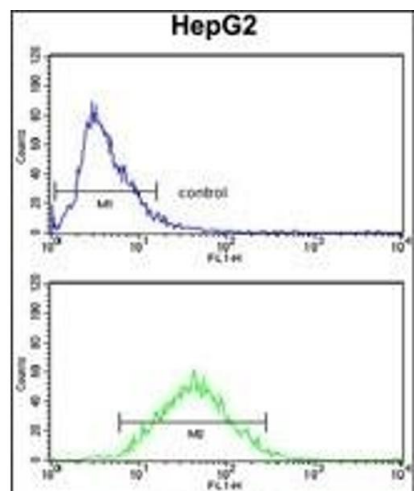
Background:	ZFP36 may be involved in transcriptional regulation.
Molecular Weight:	70270
Gene ID:	55552
NCBI Accession:	<a href="#">NP_001073962</a>
UniProt:	<a href="#">P16415</a>

## Application Details

Application Notes:	WB: 1:1000. WB: 1:1000. IHC-P: 1:50~100. FC: 1:10~50
Restrictions:	For Research Use only

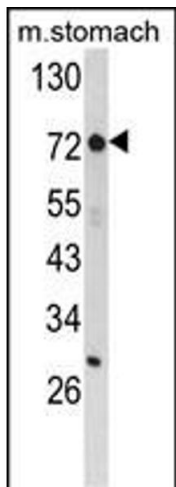
## Handling

Format:	Liquid
Buffer:	Purified polyclonal antibody supplied in PBS with 0.09 % (W/V) sodium azide.
Preservative:	Sodium azide
Precaution of Use:	This product contains Sodium azide: a POISONOUS AND HAZARDOUS SUBSTANCE which should be handled by trained staff only.
Storage:	4 °C,-20 °C
Storage Comment:	Maintain refrigerated at 2-8 °C for up to 6 months. For long term storage store at -20 °C in small aliquots to prevent freeze-thaw cycles.
Expiry Date:	6 months



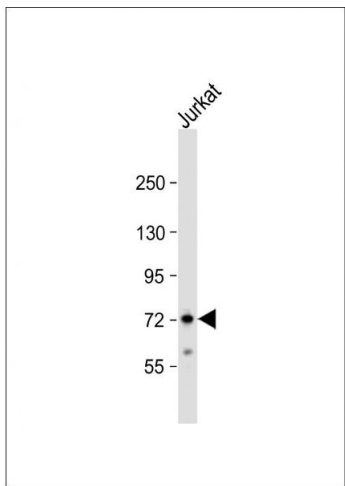
Flow Cytometry

**Image 1.** ZFP36 Antibody (Center) (ABIN652459 and ABIN2842311) flow cytometry analysis of HepG2 cells (bottom histogram) compared to a negative control (top histogram). FITC-conjugated goat-anti-rabbit secondary antibodies were used for the analysis.



Western Blotting

**Image 2.** Western blot analysis of ZFP36 Antibody (Center) (ABIN652459 and ABIN2842311) in mouse stomach tissue lysates (35 µg/lane).ZFP36 (arrow) was detected using the purified Pab.(8 µg/mL)



Western Blotting

**Image 3.** Anti-ZFP36 Antibody (Center) at 1:1000 dilution + Jurkat whole cell lysate Lysates/proteins at 20 µg per lane. Secondary Goat Anti-Rabbit IgG, (H+L), Peroxidase conjugated at 1/10000 dilution. Predicted band size : 70 kDa Blocking/Dilution buffer: 5 % NFDM/TBST.

Please check the [product details page](#) for more images. Overall 4 images are available for ABIN652459.