

Datasheet for ABIN652463
anti-PEA15 antibody (C-Term)

4 Images

1 Publication

[Go to Product page](#)

Overview

Quantity:	400 µL
Target:	PEA15
Binding Specificity:	AA 86-115, C-Term
Reactivity:	Human, Mouse
Host:	Rabbit
Clonality:	Polyclonal
Conjugate:	This PEA15 antibody is un-conjugated
Application:	Western Blotting (WB), Immunohistochemistry (Paraffin-embedded Sections) (IHC (p)), Flow Cytometry (FACS)

Product Details

Immunogen:	This PEA-15 antibody is generated from rabbits immunized with a KLH conjugated synthetic peptide between 86-115 amino acids from the C-terminal region of human PEA-15.
Clone:	RB21195
Isotype:	Ig Fraction
Predicted Reactivity:	Ha, Rat
Purification:	This antibody is purified through a protein A column, followed by peptide affinity purification.

Target Details

Target:	PEA15
---------	-------

Target Details

Alternative Name:	PEA-15 (PEA15 Products)
Background:	PEA15 is a death effector domain (DED)-containing protein predominantly expressed in the central nervous system, particularly in astrocytes.
Molecular Weight:	15040
Gene ID:	8682
NCBI Accession:	NP_003759
UniProt:	Q15121

Application Details

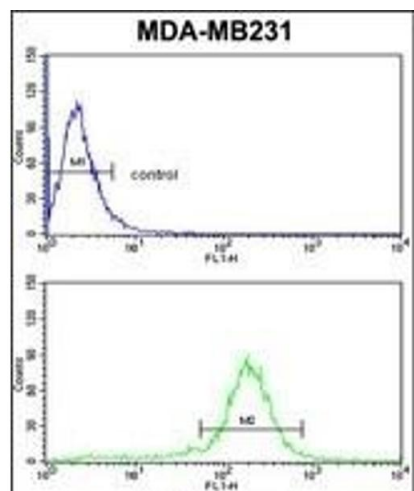
Application Notes:	WB: 1:1000. WB: 1:1000. IHC-P: 1:50~100. FC: 1:10~50
Restrictions:	For Research Use only

Handling

Format:	Liquid
Buffer:	Purified polyclonal antibody supplied in PBS with 0.09 % (W/V) sodium azide.
Preservative:	Sodium azide
Precaution of Use:	This product contains Sodium azide: a POISONOUS AND HAZARDOUS SUBSTANCE which should be handled by trained staff only.
Storage:	4 °C, -20 °C
Storage Comment:	Maintain refrigerated at 2-8 °C for up to 6 months. For long term storage store at -20 °C in small aliquots to prevent freeze-thaw cycles.
Expiry Date:	6 months

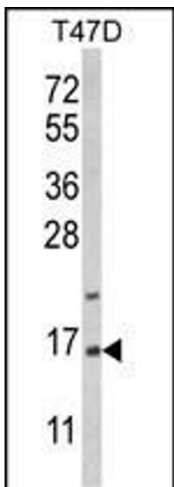
Publications

Product cited in:	Geillinger, Rathmann, Köhrle, Fiamoncini, Daniel, Kipp: "Hepatic metabolite profiles in mice with a suboptimal selenium status." in: The Journal of nutritional biochemistry , Vol. 25, Issue 9, pp. 914-22, (2014) (PubMed).
-------------------	--



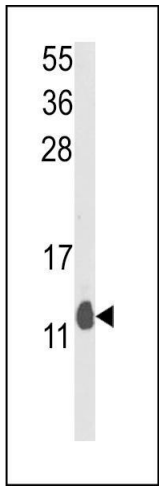
Flow Cytometry

Image 1. PEA-15 Antibody (C-term) (ABIN652463 and ABIN2842315) flow cytometric analysis of MDA-M cells (bottom histogram) compared to a negative control cell (top histogram). FITC-conjugated goat-anti-rabbit secondary antibodies were used for the analysis.



Western Blotting

Image 2. Western blot analysis of PEA-15 Antibody (C-term) (ABIN652463 and ABIN2842315) in T47D cell line lysates (35 µg/lane). PEA-15 (arrow) was detected using the purified Pab.



Western Blotting

Image 3. Western blot analysis of PEA-15 Antibody (C-term) (ABIN652463 and ABIN2842315) in mouse lung tissue lysates (35 µg/lane). PEA-15 (arrow) was detected using the purified Pab.

Please check the [product details page](#) for more images. Overall 4 images are available for ABIN652463.