

Datasheet for ABIN652465
anti-NR1H2 antibody (N-Term)[Go to Product page](#)

2 Images

Overview

Quantity:	400 µL
Target:	NR1H2
Binding Specificity:	AA 26-53, N-Term
Reactivity:	Human
Host:	Rabbit
Clonality:	Polyclonal
Conjugate:	This NR1H2 antibody is un-conjugated
Application:	Western Blotting (WB)

Product Details

Immunogen:	This NR1H2 antibody is generated from rabbits immunized with a KLH conjugated synthetic peptide between 26-53 amino acids from the N-terminal region of human NR1H2.
Clone:	RB21580
Isotype:	Ig Fraction
Purification:	This antibody is purified through a protein A column, followed by peptide affinity purification.

Target Details

Target:	NR1H2
Alternative Name:	NR1H2 (NR1H2 Products)
Background:	The liver X receptors, LXRA (NR1H3, MIM 602423) and LXRB, form a subfamily of the nuclear

Target Details

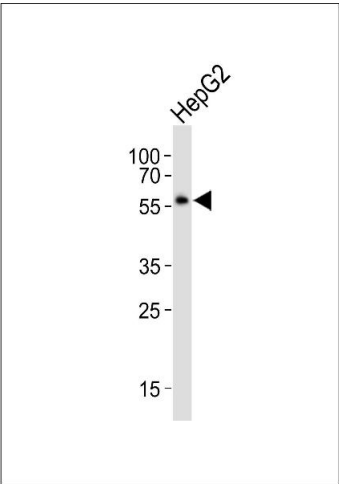
	receptor superfamily and are key regulators of macrophage function, controlling transcriptional programs involved in lipid homeostasis and inflammation.
Molecular Weight:	50974
Gene ID:	7376
NCBI Accession:	NP_001243576 , NP_009052
UniProt:	P55055
Pathways:	Nuclear Receptor Transcription Pathway , Retinoic Acid Receptor Signaling Pathway , Steroid Hormone Mediated Signaling Pathway , Nuclear Hormone Receptor Binding

Application Details

Application Notes:	WB: 1:1000. WB: 1:1000
Restrictions:	For Research Use only

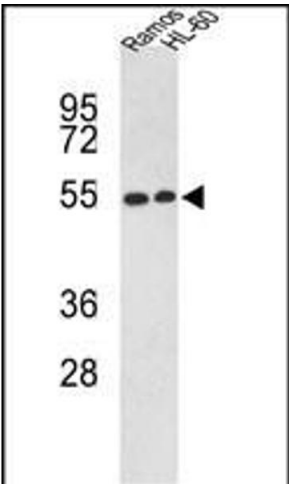
Handling

Format:	Liquid
Buffer:	Purified polyclonal antibody supplied in PBS with 0.09 % (W/V) sodium azide.
Preservative:	Sodium azide
Precaution of Use:	This product contains Sodium azide: a POISONOUS AND HAZARDOUS SUBSTANCE which should be handled by trained staff only.
Storage:	4 °C,-20 °C
Storage Comment:	Maintain refrigerated at 2-8 °C for up to 6 months. For long term storage store at -20 °C in small aliquots to prevent freeze-thaw cycles.
Expiry Date:	6 months



Western Blotting

Image 1. Western blot analysis of lysate from HepG2 cell line, using NR1H2 Antibody (N-term) (ABIN652465 and ABIN2842316). (ABIN652465 and ABIN2842316) was diluted at 1:1000. A goat anti-rabbit IgG H&L(HRP) at 1:10000 dilution was used as the secondary antibody. Lysate at 20 µg.



Western Blotting

Image 2. Western blot analysis of NR1H2 Antibody (N-term) (ABIN652465 and ABIN2842316) in Ramos, HL-60 cell line lysates (35 µg/lane). NR1H2 (arrow) was detected using the purified Pab.