



[Go to Product page](#)

Datasheet for ABIN652467

anti-CCHCR1 antibody (AA 599-627)

4 Images

Overview

Quantity:	400 µL
Target:	CCHCR1
Binding Specificity:	AA 599-627
Reactivity:	Human
Host:	Rabbit
Clonality:	Polyclonal
Conjugate:	This CCHCR1 antibody is un-conjugated
Application:	Western Blotting (WB), Immunofluorescence (IF), Flow Cytometry (FACS), Immunohistochemistry (Paraffin-embedded Sections) (IHC (p))

Product Details

Immunogen:	This CCHCR1 antibody is generated from rabbits immunized with a KLH conjugated synthetic peptide between 599-627 amino acids from the Central region of human CCHCR1.
Clone:	RB21781
Isotype:	Ig Fraction
Purification:	This antibody is purified through a protein A column, followed by peptide affinity purification.

Target Details

Target:	CCHCR1
Alternative Name:	CCHCR1 (CCHCR1 Products)

Target Details

Background: CCHCR1 may be a regulator of keratinocyte proliferation or differentiation.

Molecular Weight: 88671

Gene ID: 54535

NCBI Accession: [NP_001099033](#), [NP_001099034](#), [NP_061925](#)

UniProt: [Q8TD31](#)

Application Details

Application Notes: IF: 1:10~50. WB: 1:1000. IHC-P: 1:50~100. FC: 1:10~50

Restrictions: For Research Use only

Handling

Format: Liquid

Buffer: Purified polyclonal antibody supplied in PBS with 0.09 % (W/V) sodium azide.

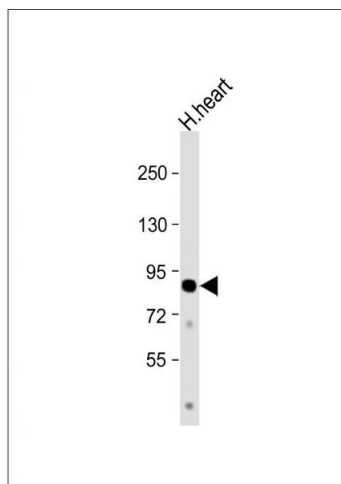
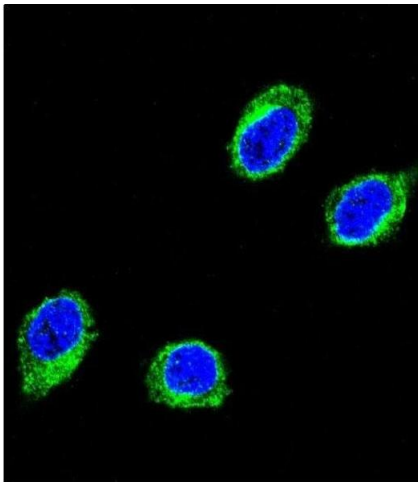
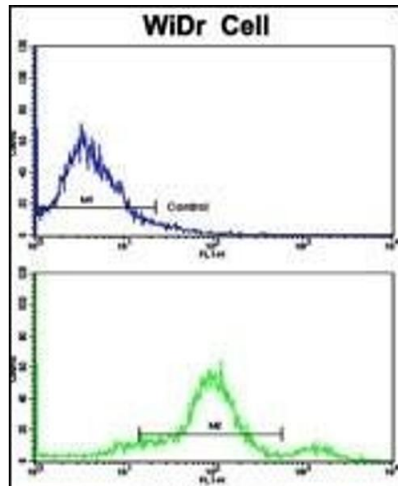
Preservative: Sodium azide

Precaution of Use: This product contains Sodium azide: a POISONOUS AND HAZARDOUS SUBSTANCE which should be handled by trained staff only.

Storage: 4 °C,-20 °C

Storage Comment: Maintain refrigerated at 2-8 °C for up to 6 months. For long term storage store at -20 °C in small aliquots to prevent freeze-thaw cycles.

Expiry Date: 6 months



Flow Cytometry

Image 1. Flow cytometric analysis of widr cells using CCHCR1 Antibody (Center)(bottom histogram) compared to a negative control cell (top histogram). FITC-conjugated goat-anti-rabbit secondary antibodies were used for the analysis.

Immunofluorescence

Image 2. Confocal immunofluorescent analysis of CCHCR1 Antibody (Center) (ABIN652467 and ABIN2842318) with 293 cell followed by Alexa Fluor® 488-conjugated goat anti-rabbit IgG (green). D1 was used to stain the cell nuclear (blue).

Western Blotting

Image 3. Anti-CCHCR1 Antibody (Center) at 1:1000 dilution + human heart lysate Lysates/proteins at 20 µg per lane. Secondary Goat Anti-Rabbit IgG, (H+L), Peroxidase conjugated at 1/10000 dilution. Predicted band size : 89 kDa Blocking/Dilution buffer: 5 % NFDm/TBST.

Please check the [product details page](#) for more images. Overall 4 images are available for ABIN652467.