



Datasheet for ABIN652468  
**anti-LRPAP1 antibody (C-Term)**



[Go to Product page](#)

3 Images

1 Publication

## Overview

Quantity:	400 µL
Target:	LRPAP1
Binding Specificity:	AA 281-309, C-Term
Reactivity:	Human
Host:	Rabbit
Clonality:	Polyclonal
Conjugate:	This LRPAP1 antibody is un-conjugated
Application:	Western Blotting (WB), Immunohistochemistry (Paraffin-embedded Sections) (IHC (p)), Flow Cytometry (FACS)

## Product Details

Immunogen:	This LRPAP1 antibody is generated from rabbits immunized with a KLH conjugated synthetic peptide between 281-309 amino acids from the C-terminal region of human LRPAP1.
Clone:	RB21859
Isotype:	Ig Fraction
Purification:	This antibody is purified through a protein A column, followed by peptide affinity purification.

## Target Details

Target:	LRPAP1
Alternative Name:	LRPAP1 ( <a href="#">LRPAP1 Products</a> )

## Target Details

---

Background:	LRPAP1 interacts with LRP1/alpha-2-macroglobulin receptor and glycoprotein 330.
Molecular Weight:	41466
Gene ID:	4043
NCBI Accession:	<a href="#">NP_002328</a>
UniProt:	<a href="#">P30533</a>

## Application Details

---

Application Notes:	WB: 1:1000. IHC-P: 1:10~50. FC: 1:10~50
Restrictions:	For Research Use only

## Handling

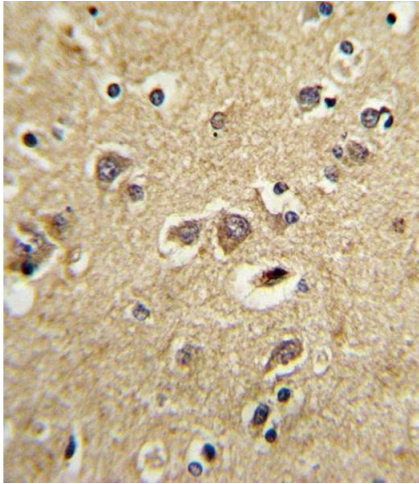
---

Format:	Liquid
Buffer:	Purified polyclonal antibody supplied in PBS with 0.09 % (W/V) sodium azide.
Preservative:	Sodium azide
Precaution of Use:	This product contains Sodium azide: a POISONOUS AND HAZARDOUS SUBSTANCE which should be handled by trained staff only.
Storage:	4 °C,-20 °C
Storage Comment:	Maintain refrigerated at 2-8 °C for up to 6 months. For long term storage store at -20 °C in small aliquots to prevent freeze-thaw cycles.
Expiry Date:	6 months

## Publications

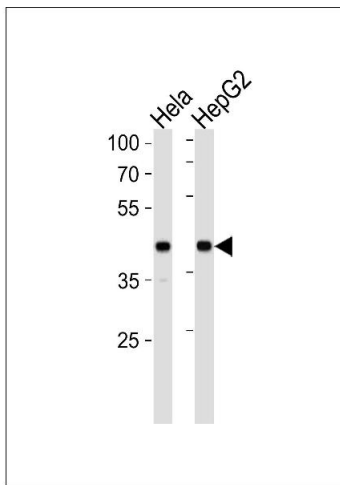
---

Product cited in:	He, Yang, Li: "The clinical pathological significance of Thy1 and CD49f expression in chondrosarcomas." in: <b>Pathology, research and practice</b> , Vol. 212, Issue 7, pp. 636-42, (2017) ( <a href="#">PubMed</a> ).
-------------------	---



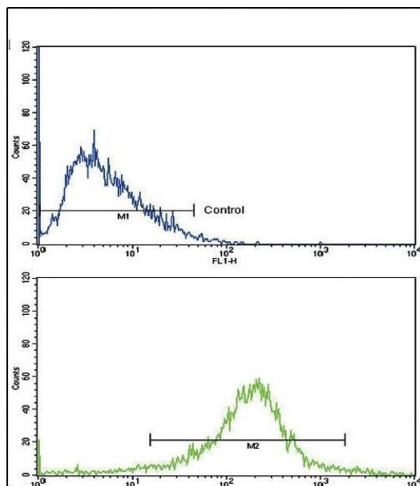
### Immunohistochemistry (Paraffin-embedded Sections)

**Image 1.** Formalin-fixed and raffin-embedded human brain tissue with LRP1 Antibody (C-term), which was peroxidase-conjugated to the secondary antibody, followed by DAB staining. This data demonstrates the use of this antibody for immunohistochemistry, clinical relevance has not been evaluated.



### Western Blotting

**Image 2.** LRP1 Antibody (C-term) (ABIN652468 and ABIN2842319) western blot analysis in HeLa,HepG2 cell line lysates (35 µg/lane).This demonstrates the LRP1 antibody detected the LRP1 protein (arrow).



### Flow Cytometry

**Image 3.** Flow cytometric analysis of HepG2 cells using LRP1 Antibody (C-term)(bottom histogram) comred to a negative control cell (top histogram). FITC-conjugated goat-anti-rabbit secondary antibodies were used for the analysis.