



[Go to Product page](#)

Datasheet for ABIN652475
anti-ABI1 antibody (N-Term)

4 Images

Overview

Quantity:	400 µL
Target:	ABI1
Binding Specificity:	AA 81-108, N-Term
Reactivity:	Human
Host:	Rabbit
Clonality:	Polyclonal
Conjugate:	This ABI1 antibody is un-conjugated
Application:	Western Blotting (WB), Immunohistochemistry (Paraffin-embedded Sections) (IHC (p)), Immunofluorescence (IF), Flow Cytometry (FACS)

Product Details

Immunogen:	This ABI1 antibody is generated from rabbits immunized with a KLH conjugated synthetic peptide between 81-108 amino acids from the N-terminal region of human ABI1.
Clone:	RB22014
Isotype:	Ig Fraction
Predicted Reactivity:	Zf, M, Rat
Purification:	This antibody is purified through a protein A column, followed by peptide affinity purification.

Target Details

Target:	ABI1
---------	------

Target Details

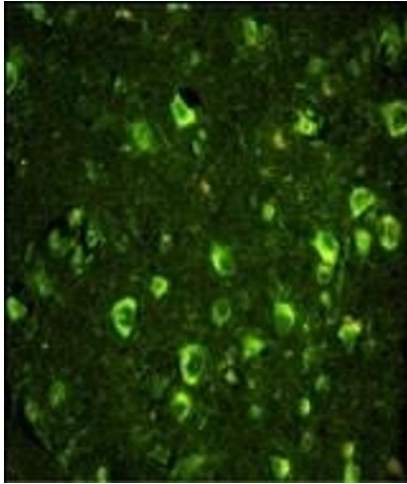
Alternative Name:	ABI1 (ABI1 Products)
Background:	ABI1 has been found to form a complex with EPS8 and SOS1, and is thought to be involved in the transduction of signals from Ras to Rac. In addition, this protein may play a role in the regulation of EGF-induced Erk pathway activation as well as cytoskeletal reorganization and EGFR signaling.
Molecular Weight:	55081
Gene ID:	10006
NCBI Accession:	NP_001012768 , NP_001012769 , NP_001012770 , NP_001171587 , NP_001171590 , NP_001171591 , NP_001171592 , NP_001171593 , NP_001171594 , NP_001171595 , NP_001171596 , NP_005461
UniProt:	Q8IZP0
Pathways:	RTK Signaling , Response to Water Deprivation , ER-Nucleus Signaling

Application Details

Application Notes:	IF: 1:10~50. WB: 1:1000. IHC-P: 1:50~100. FC: 1:10~50
Restrictions:	For Research Use only

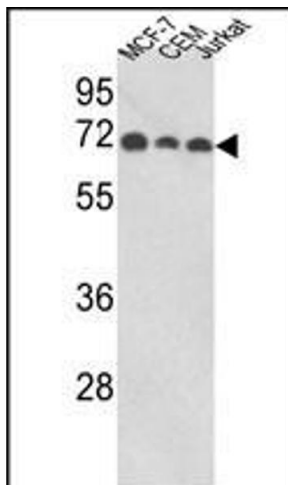
Handling

Format:	Liquid
Buffer:	Purified polyclonal antibody supplied in PBS with 0.09 % (W/V) sodium azide.
Preservative:	Sodium azide
Precaution of Use:	This product contains Sodium azide: a POISONOUS AND HAZARDOUS SUBSTANCE which should be handled by trained staff only.
Storage:	4 °C,-20 °C
Storage Comment:	Maintain refrigerated at 2-8 °C for up to 6 months. For long term storage store at -20 °C in small aliquots to prevent freeze-thaw cycles.
Expiry Date:	6 months



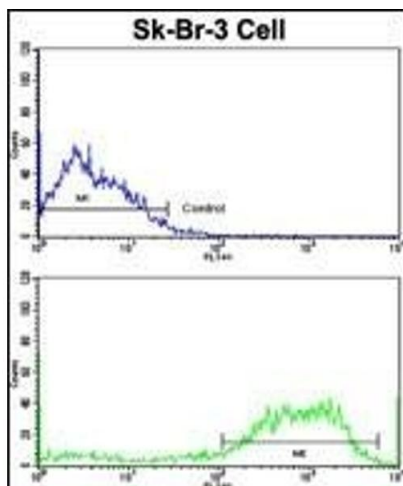
Immunofluorescence

Image 1. Immunofluorescence analysis of ABI1 Antibody (N-term) with paraffin-embedded human brain tissue. 0.05 mg/mL primary antibody was followed by FITC-conjugated goat anti-rabbit IgG (whole molecule). FITC emits green fluorescence.



Western Blotting

Image 2. Western blot analysis of ABI1 Antibody (N-term) (ABIN652475 and ABIN2842323) in MCF-7, CEM, Jurkat cell line lysates (35 µg/lane). ABI1 (arrow) was detected using the purified Pab.



Flow Cytometry

Image 3. Flow cytometric analysis of SK-Br-3 cells using ABI1 Antibody (N-term)(bottom histogram) compared to a negative control cell (top histogram). FITC-conjugated goat-anti-rabbit secondary antibodies were used for the analysis.

Please check the [product details page](#) for more images. Overall 4 images are available for ABIN652475.