

Datasheet for ABIN652489

anti-Calmodulin 1 antibody (C-Term)

4 Images

[Go to Product page](#)

Overview

Quantity:	400 µL
Target:	Calmodulin 1 (Calm1)
Binding Specificity:	AA 107-132, C-Term
Reactivity:	Human
Host:	Rabbit
Clonality:	Polyclonal
Conjugate:	This Calmodulin 1 antibody is un-conjugated
Application:	Western Blotting (WB), Immunofluorescence (IF), Immunohistochemistry (Paraffin-embedded Sections) (IHC (p)), Flow Cytometry (FACS)

Product Details

Immunogen:	This CALM1 antibody is generated from rabbits immunized with a KLH conjugated synthetic peptide between 107-132 amino acids from the C-terminal region of human CALM1.
Clone:	RB21103
Isotype:	Ig Fraction
Predicted Reactivity:	M, Rat, X, B, E, C, Zf, D, Rb, Sh
Purification:	This antibody is purified through a protein A column, followed by peptide affinity purification.

Target Details

Target:	Calmodulin 1 (Calm1)
---------	----------------------

Target Details

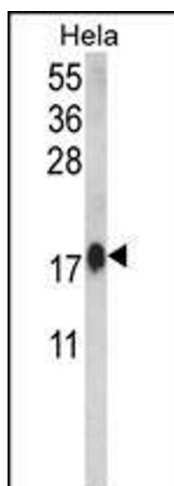
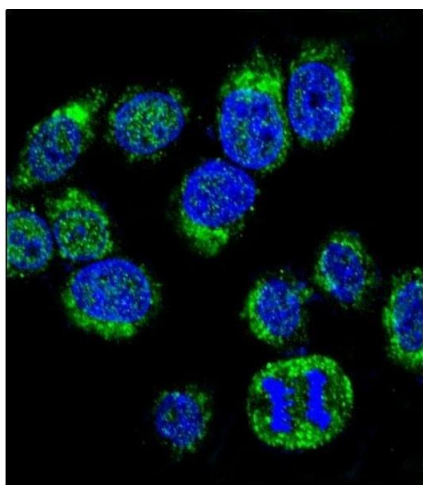
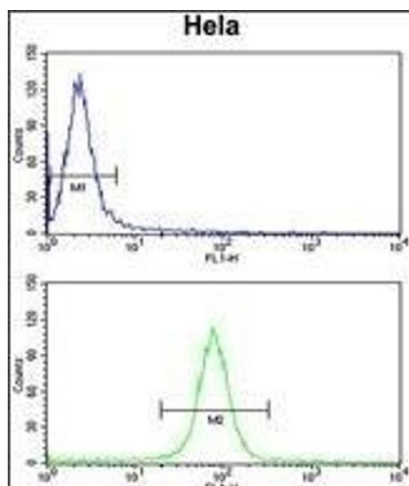
Alternative Name:	CALM1 (Calm1 Products)
Background:	CALM1 is a member of the EF-hand calcium-binding protein family. Calmodulin mediates the control of a large number of enzymes and other proteins by Ca(2+). Among the enzymes to be stimulated by the calmodulin-Ca(2+) complex are a number of protein kinases and phosphatases. Together with CEP110 and centrin, is involved in a genetic pathway that regulates the centrosome cycle and progression through cytokinesis.
Molecular Weight:	16838
Gene ID:	808
NCBI Accession:	NP_001734 , NP_005175 , NP_008819
UniProt:	P0DP23
Pathways:	cAMP Metabolic Process , Myometrial Relaxation and Contraction , G-protein mediated Events , Interaction of EGFR with phospholipase C-gamma , Phototransduction , BCR Signaling

Application Details

Application Notes:	IF: 1:10~50. WB: 1:1000. IHC-P: 1:50~100. FC: 1:10~50
Restrictions:	For Research Use only

Handling

Format:	Liquid
Buffer:	Purified polyclonal antibody supplied in PBS with 0.09 % (W/V) sodium azide.
Preservative:	Sodium azide
Precaution of Use:	This product contains Sodium azide: a POISONOUS AND HAZARDOUS SUBSTANCE which should be handled by trained staff only.
Storage:	4 °C, -20 °C
Storage Comment:	Maintain refrigerated at 2-8 °C for up to 6 months. For long term storage store at -20 °C in small aliquots to prevent freeze-thaw cycles.
Expiry Date:	6 months



Flow Cytometry

Image 1. CALM1 Antibody (C-term) (ABIN652489 and ABIN2842329) flow cytometry analysis of HeLa cells (bottom histogram) compared to a negative control cell (top histogram). FITC-conjugated goat-anti-rabbit secondary antibodies were used for the analysis.

Immunofluorescence

Image 2. Confocal immunofluorescent analysis of CALM1 Antibody (C-term) (ABIN652489 and ABIN2842329) with HeLa cell followed by Alexa Fluor® 488-conjugated goat anti-rabbit IgG (green). DAPI was used to stain the cell nuclear (blue).

Western Blotting

Image 3. Western blot analysis of CALM1 Antibody (C-term) (ABIN652489 and ABIN2842329) in HeLa cell line lysates (35 µg/lane). CALM1 (arrow) was detected using the purified Pab.(2 µg/mL)

Please check the [product details page](#) for more images. Overall 4 images are available for ABIN652489.