

Datasheet for ABIN652491
anti-AP2A2 antibody (AA 610-637)

3 Images

[Go to Product page](#)

Overview

| | |
|----------------------|---|
| Quantity: | 400 µL |
| Target: | AP2A2 |
| Binding Specificity: | AA 610-637 |
| Reactivity: | Human |
| Host: | Rabbit |
| Clonality: | Polyclonal |
| Conjugate: | This AP2A2 antibody is un-conjugated |
| Application: | Western Blotting (WB), Immunohistochemistry (Paraffin-embedded Sections) (IHC (p)), Flow Cytometry (FACS) |

Product Details

| | |
|---------------|---|
| Immunogen: | This AP2A2 antibody is generated from rabbits immunized with a KLH conjugated synthetic peptide between 610-637 amino acids from the Central region of human AP2A2. |
| Clone: | RB22030 |
| Isotype: | Ig Fraction |
| Purification: | This antibody is purified through a protein A column, followed by peptide affinity purification. |

Target Details

| | |
|-------------------|--|
| Target: | AP2A2 |
| Alternative Name: | AP2A2 (AP2A2 Products) |

Target Details

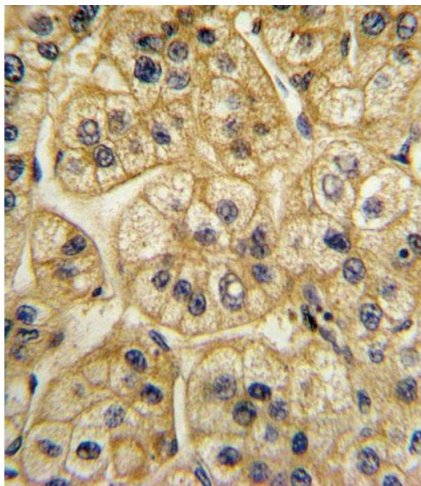
| | |
|-------------------|--|
| Background: | Adaptins are components of the adaptor complexes which link clathrin to receptors in coated vesicles. Clathrin-associated protein complexes are believed to interact with the cytoplasmic tails of membrane proteins, leading to their selection and concentration. Alpha adaptin is a subunit of the plasma membrane adaptor. It binds polyphosphoinositides. |
| Molecular Weight: | 103960 |
| Gene ID: | 161 |
| NCBI Accession: | NP_001229766 , NP_036437 |
| UniProt: | O94973 |
| Pathways: | EGFR Signaling Pathway , Neurotrophin Signaling Pathway , EGFR Downregulation , SARS-CoV-2 Protein Interactome |

Application Details

| | |
|--------------------|---|
| Application Notes: | WB: 1:1000. IHC-P: 1:10~50. FC: 1:10~50 |
| Restrictions: | For Research Use only |

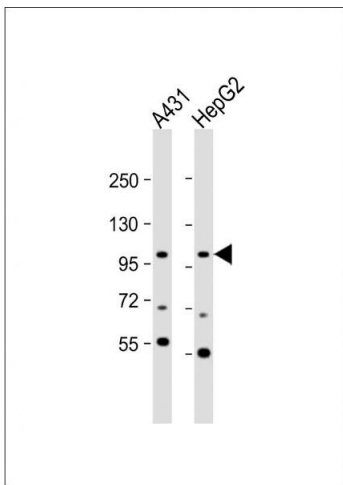
Handling

| | |
|--------------------|--|
| Format: | Liquid |
| Buffer: | Purified polyclonal antibody supplied in PBS with 0.09 % (W/V) sodium azide. |
| Preservative: | Sodium azide |
| Precaution of Use: | This product contains Sodium azide: a POISONOUS AND HAZARDOUS SUBSTANCE which should be handled by trained staff only. |
| Storage: | 4 °C, -20 °C |
| Storage Comment: | Maintain refrigerated at 2-8 °C for up to 6 months. For long term storage store at -20 °C in small aliquots to prevent freeze-thaw cycles. |
| Expiry Date: | 6 months |



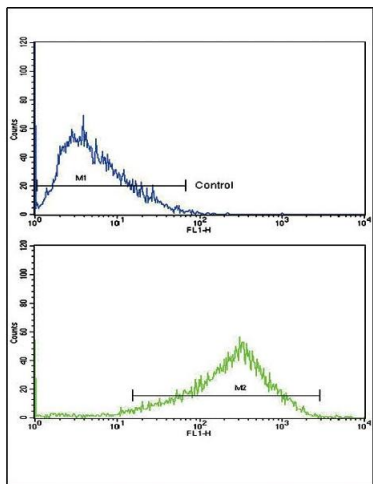
Immunohistochemistry (Paraffin-embedded Sections)

Image 1. Formalin-fixed and paraffin-embedded human hepatocarcinoma with A2 Antibody (Center), which was peroxidase-conjugated to the secondary antibody, followed by DAB staining. This data demonstrates the use of this antibody for immunohistochemistry, clinical relevance has not been evaluated.



Western Blotting

Image 2. All lanes : Anti-A2 Antibody (Center) at 1:1000 dilution Lane 1: A431 whole cell lysate Lane 2: HepG2 whole cell lysate Lysates/proteins at 20 µg per lane. Secondary Goat Anti-Rabbit IgG, (H+L), Peroxidase conjugated at 1/10000 dilution. Predicted band size : 104 kDa Blocking/Dilution buffer: 5 % NFDm/TBST.



Flow Cytometry

Image 3. Flow cytometric analysis of HepG2 cells using A2 Antibody (Center)(bottom histogram) compared to a negative control cell (top histogram). FITC-conjugated goat-anti-rabbit secondary antibodies were used for the analysis.