

Datasheet for ABIN652493  
**anti-BIM antibody (AA 134-160)**[Go to Product page](#)

## 4 Images

## Overview

Quantity:	400 µL
Target:	BIM (BCL2L11)
Binding Specificity:	AA 134-160
Reactivity:	Human
Host:	Rabbit
Clonality:	Polyclonal
Conjugate:	This BIM antibody is un-conjugated
Application:	Western Blotting (WB), Immunohistochemistry (Paraffin-embedded Sections) (IHC (p)), Flow Cytometry (FACS)

## Product Details

Immunogen:	This BCL2L11 antibody is generated from rabbits immunized with a KLH conjugated synthetic peptide between 134-160 amino acids from the Central region of human BCL2L11.
Clone:	RB22105
Isotype:	Ig Fraction
Predicted Reactivity:	M, Rat
Purification:	This antibody is purified through a protein A column, followed by peptide affinity purification.

## Target Details

Target:	BIM (BCL2L11)
---------	---------------

## Target Details

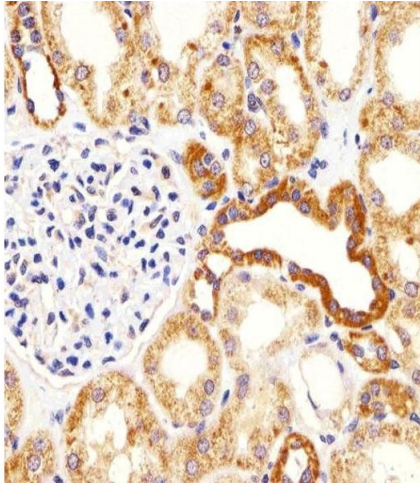
Alternative Name:	BCL2L11 ( <a href="#">BCL2L11 Products</a> )
Background:	BCL2L11 belongs to the BCL-2 protein family. BCL-2 family members form hetero- or homodimers and act as anti- or pro-apoptotic regulators that are involved in a wide variety of cellular activities. This protein contains a Bcl-2 homology domain 3 (BH3). It has been shown to interact with other members of the BCL-2 protein family, including BCL2, BCL2L1/BCL-X(L), and MCL1, and to act as an apoptotic activator.
Molecular Weight:	22171
Gene ID:	10018
NCBI Accession:	<a href="#">NP_001191035</a> , <a href="#">NP_001191036</a> , <a href="#">NP_001191037</a> , <a href="#">NP_001191038</a> , <a href="#">NP_001191039</a> , <a href="#">NP_001191040</a> , <a href="#">NP_001191041</a> , <a href="#">NP_001191042</a> , <a href="#">NP_006529</a> , <a href="#">NP_619527</a> , <a href="#">NP_619528</a> , <a href="#">NP_619529</a> , <a href="#">NP_619530</a> , <a href="#">NP_619531</a> , <a href="#">NP_61953</a>
UniProt:	<a href="#">O43521</a>
Pathways:	<a href="#">PI3K-Akt Signaling</a> , <a href="#">Neurotrophin Signaling Pathway</a> , <a href="#">Tube Formation</a> , <a href="#">Positive Regulation of Endopeptidase Activity</a>

## Application Details

Application Notes:	WB: 1:1000. IHC-P: 1:10~50. IHC-P: 1:25. FC: 1:10~50
Restrictions:	For Research Use only

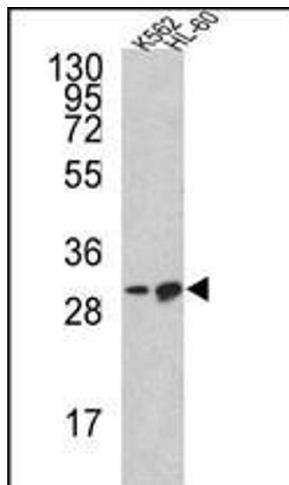
## Handling

Format:	Liquid
Buffer:	Purified polyclonal antibody supplied in PBS with 0.09 % (W/V) sodium azide.
Preservative:	Sodium azide
Precaution of Use:	This product contains Sodium azide: a POISONOUS AND HAZARDOUS SUBSTANCE which should be handled by trained staff only.
Storage:	4 °C,-20 °C
Storage Comment:	Maintain refrigerated at 2-8 °C for up to 6 months. For long term storage store at -20 °C in small aliquots to prevent freeze-thaw cycles.
Expiry Date:	6 months



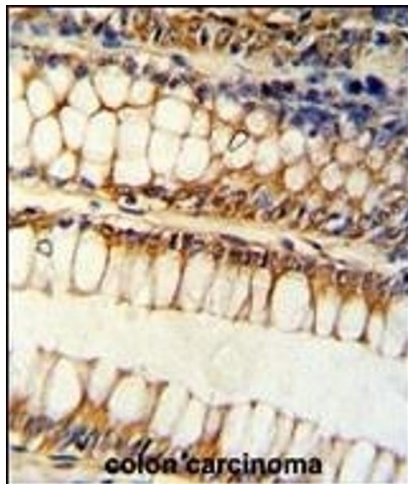
#### Immunohistochemistry (Paraffin-embedded Sections)

**Image 1.** Immunohistochemical analysis of paraffin-embedded H. kidney section using BCL2L11 Antibody (Center) (ABIN652493 and ABIN2842332). (ABIN652493 and ABIN2842332) was diluted at 1:25 dilution. A undiluted biotinylated goat polyvalent antibody was used as the secondary, followed by DAB staining.



#### Western Blotting

**Image 2.** Western blot analysis of BCL2L11 Antibody (Center) (ABIN652493 and ABIN2842332) in K562, HL-60 cell line lysates (35 µg/lane). BCL2L11 (arrow) was detected using the purified Pab.



#### Immunohistochemistry (Paraffin-embedded Sections)

**Image 3.** Formalin-fixed and paraffin-embedded human colon carcinoma reacted with BCL2L11 Antibody (Center), which was peroxidase-conjugated to the secondary antibody, followed by DAB staining. This data demonstrates the use of this antibody for immunohistochemistry, clinical relevance has not been evaluated.

Please check the [product details page](#) for more images. Overall 4 images are available for ABIN652493.