

Datasheet for ABIN652499
anti-Gasdermin B antibody (AA 208-237)[Go to Product page](#)**1** Image**1** Publication

Overview

Quantity:	400 µL
Target:	Gasdermin B (GSDMB)
Binding Specificity:	AA 208-237
Reactivity:	Human
Host:	Rabbit
Clonality:	Polyclonal
Conjugate:	This Gasdermin B antibody is un-conjugated
Application:	Western Blotting (WB)

Product Details

Immunogen:	This GSDMB antibody is generated from rabbits immunized with a KLH conjugated synthetic peptide between 208-237 amino acids from the Central region of human GSDMB.
Clone:	RB22342
Isotype:	Ig Fraction
Purification:	This antibody is purified through a protein A column, followed by peptide affinity purification.

Target Details

Target:	Gasdermin B (GSDMB)
Alternative Name:	GSDMB (GSDMB Products)
Background:	GSDMB is a protein with 3' exonuclease activity. Enzymes with this activity are involved in DNA

Target Details

	replication, repair, and recombination. Similarity to an E. coli protein suggests that this enzyme may be a subunit of DNA polymerase III, which does not have intrinsic exonuclease activity.
Molecular Weight:	46786
Gene ID:	55876
NCBI Accession:	NP_001035936 , NP_001159430 , NP_001159431 , NP_061000
UniProt:	Q8TAX9

Application Details

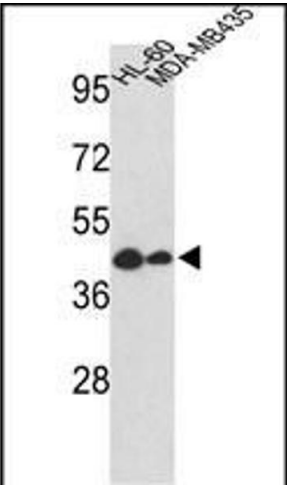
Application Notes:	WB: 1:1000
Restrictions:	For Research Use only

Handling

Format:	Liquid
Buffer:	Purified polyclonal antibody supplied in PBS with 0.09 % (W/V) sodium azide.
Preservative:	Sodium azide
Precaution of Use:	This product contains Sodium azide: a POISONOUS AND HAZARDOUS SUBSTANCE which should be handled by trained staff only.
Storage:	4 °C,-20 °C
Storage Comment:	Maintain refrigerated at 2-8 °C for up to 6 months. For long term storage store at -20 °C in small aliquots to prevent freeze-thaw cycles.
Expiry Date:	6 months

Publications

Product cited in:	Zhang, Liu, Xu, Sun, Gong, Shao: "Neferine, an alkaloid ingredient in lotus seed embryo, inhibits proliferation of human osteosarcoma cells by promoting p38 MAPK-mediated p21 stabilization." in: European journal of pharmacology , Vol. 677, Issue 1-3, pp. 47-54, (2012) (PubMed).
-------------------	---



Western Blotting

Image 1. Western blot analysis of GSDMB Antibody (Center) (ABIN652499 and ABIN2842335) in HL-60, MDA-M cell line lysates (35 µg/lane). GSDMB (arrow) was detected using the purified Pab.