

Datasheet for ABIN652500
anti-CECR5 antibody (AA 164-190)[Go to Product page](#)

3 Images

Overview

Quantity:	400 µL
Target:	CECR5
Binding Specificity:	AA 164-190
Reactivity:	Human
Host:	Rabbit
Clonality:	Polyclonal
Conjugate:	This CECR5 antibody is un-conjugated
Application:	Western Blotting (WB), Immunohistochemistry (Paraffin-embedded Sections) (IHC (p)), Flow Cytometry (FACS)

Product Details

Immunogen:	This CECR5 antibody is generated from rabbits immunized with a KLH conjugated synthetic peptide between 164-190 amino acids from the Central region of human CECR5.
Clone:	RB22362
Isotype:	Ig Fraction
Purification:	This antibody is purified through a protein A column, followed by peptide affinity purification.

Target Details

Target:	CECR5
Alternative Name:	CECR5 (CECR5 Products)

Target Details

Molecular Weight:	46321
Gene ID:	27440
NCBI Accession:	NP_060299 , NP_149061
UniProt:	Q9BXW7

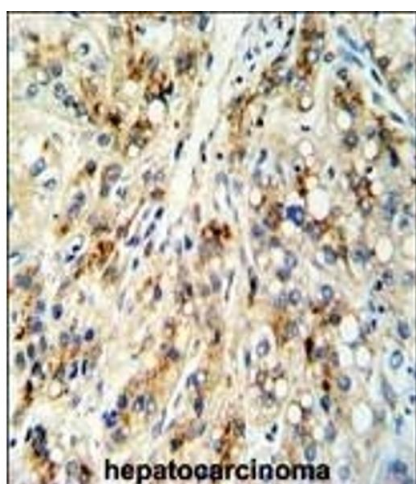
Application Details

Application Notes:	WB: 1:1000. IHC-P: 1:50~100. FC: 1:10~50
Restrictions:	For Research Use only

Handling

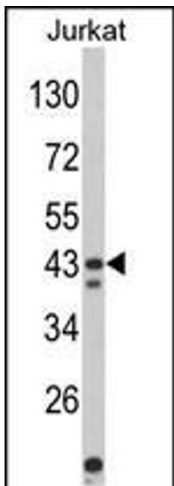
Format:	Liquid
Buffer:	Purified polyclonal antibody supplied in PBS with 0.09 % (W/V) sodium azide.
Preservative:	Sodium azide
Precaution of Use:	This product contains Sodium azide: a POISONOUS AND HAZARDOUS SUBSTANCE which should be handled by trained staff only.
Storage:	4 °C, -20 °C
Storage Comment:	Maintain refrigerated at 2-8 °C for up to 6 months. For long term storage store at -20 °C in small aliquots to prevent freeze-thaw cycles.
Expiry Date:	6 months

Images



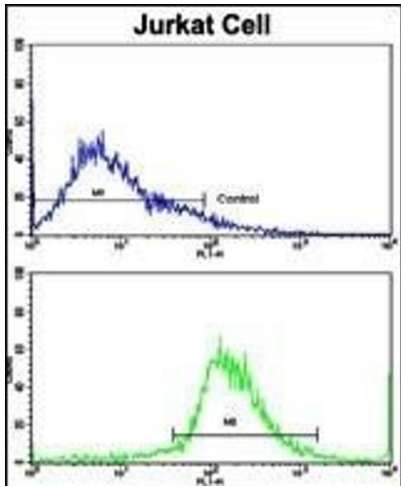
Immunohistochemistry (Paraffin-embedded Sections)

Image 1. Formalin-fixed and paraffin-embedded human hepatocarcinoma reacted with CECR5 Antibody (Center), which was peroxidase-conjugated to the secondary antibody, followed by DAB staining. This data demonstrates the use of this antibody for immunohistochemistry, clinical relevance has not been evaluated.



Western Blotting

Image 2. Western blot analysis of CECR5 Antibody (Center) (ABIN652500 and ABIN2842336) in Jurkat cell line lysates (35 µg/lane). CECR5 (arrow) was detected using the purified Pab.



Flow Cytometry

Image 3. Flow cytometric analysis of jurkat cells using CECR5 Antibody (Center)(bottom histogram) compared to a negative control cell (top histogram). FITC-conjugated goat-anti-rabbit secondary antibodies were used for the analysis.