

Datasheet for ABIN652503  
**anti-ATP50 antibody (N-Term)**



[Go to Product page](#)

5 Images

### Overview

Quantity:	400 µL
Target:	ATP50
Binding Specificity:	AA 38-64, N-Term
Reactivity:	Human
Host:	Rabbit
Clonality:	Polyclonal
Conjugate:	This ATP50 antibody is un-conjugated
Application:	Western Blotting (WB), Immunofluorescence (IF), Flow Cytometry (FACS), Immunohistochemistry (Paraffin-embedded Sections) (IHC (p))

### Product Details

Immunogen:	This ATP50 antibody is generated from rabbits immunized with a KLH conjugated synthetic peptide between 38-64 amino acids from the N-terminal region of human ATP50.
Clone:	RB22376
Isotype:	Ig Fraction
Predicted Reactivity:	B, Pig
Purification:	This antibody is purified through a protein A column, followed by peptide affinity purification.

### Target Details

Target:	ATP50
---------	-------

## Target Details

---

Alternative Name:	<a href="#">ATP50 (ATP50 Products)</a>
Background:	ATP50 is a component of the F-type ATPase found in the mitochondrial matrix. F-type ATPases are composed of a catalytic core and a membrane proton channel. This protein appears to be part of the connector linking these two components and may be involved in transmission of conformational changes or proton conductance.
Molecular Weight:	23277
Gene ID:	539
NCBI Accession:	<a href="#">NP_001688</a>
UniProt:	<a href="#">P48047</a>
Pathways:	<a href="#">Proton Transport, Ribonucleoside Biosynthetic Process</a>

## Application Details

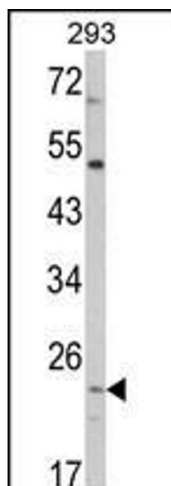
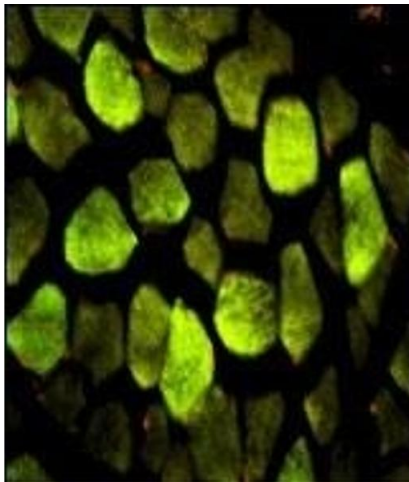
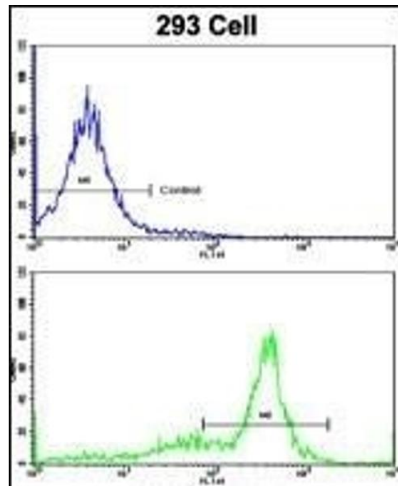
---

Application Notes:	IF: 1:10~50. WB: 1:1000. WB: 1:1000. IHC-P: 1:50~100. FC: 1:10~50
Restrictions:	For Research Use only

## Handling

---

Format:	Liquid
Buffer:	Purified polyclonal antibody supplied in PBS with 0.09 % (W/V) sodium azide.
Preservative:	Sodium azide
Precaution of Use:	This product contains Sodium azide: a POISONOUS AND HAZARDOUS SUBSTANCE which should be handled by trained staff only.
Storage:	4 °C, -20 °C
Storage Comment:	Maintain refrigerated at 2-8 °C for up to 6 months. For long term storage store at -20 °C in small aliquots to prevent freeze-thaw cycles.
Expiry Date:	6 months



### Flow Cytometry

**Image 1.** Flow cytometric analysis of 293 cells using ATP50 Antibody (N-term)(bottom histogram) compared to a negative control cell (top histogram). FITC-conjugated goat-anti-rabbit secondary antibodies were used for the analysis.

### Immunofluorescence

**Image 2.** Immunofluorescence analysis of ATP50 Antibody (N-term) with paraffin-embedded human skeletal muscle. 0.05 mg/mL primary antibody was followed by FITC-conjugated goat anti-rabbit IgG (whole molecule). FITC emits green fluorescence. Red counterstaining is PI.

### Western Blotting

**Image 3.** Western blot analysis of ATP50 Antibody (N-term) (ABIN652503 and ABIN2842338) in 293 cell line lysates (35 µg/lane). ATP50 (arrow) was detected using the purified Pab.

Please check the [product details page](#) for more images. Overall 5 images are available for ABIN652503.