

Datasheet for ABIN652516

anti-Retinoblastoma 1 antibody (C-Term)

4 Images

[Go to Product page](#)

Overview

Quantity:	400 µL
Target:	Retinoblastoma 1 (RB1)
Binding Specificity:	AA 858-886, C-Term
Reactivity:	Human
Host:	Rabbit
Clonality:	Polyclonal
Conjugate:	This Retinoblastoma 1 antibody is un-conjugated
Application:	Western Blotting (WB), Immunohistochemistry (Paraffin-embedded Sections) (IHC (p)), Flow Cytometry (FACS)

Product Details

Immunogen:	This RB1 antibody is generated from rabbits immunized with a KLH conjugated synthetic peptide between 858-886 amino acids from the C-terminal region of human RB1.
Clone:	RB20715
Isotype:	Ig Fraction
Predicted Reactivity:	Rat
Purification:	This antibody is prepared by Saturated Ammonium Sulfate (SAS) precipitation followed by dialysis against PBS.

Target Details

Target:	Retinoblastoma 1 (RB1)
---------	------------------------

Target Details

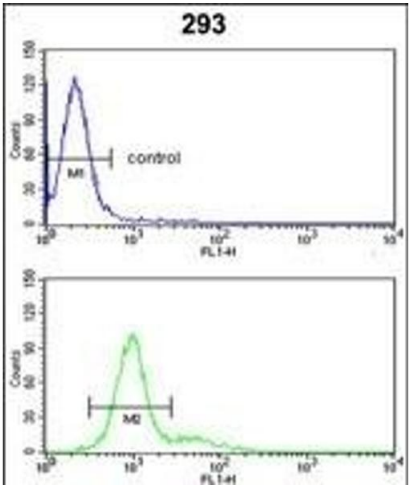
Alternative Name:	RB1 (RB1 Products)
Background:	RB1 is a negative regulator of the cell cycle and was the first tumor suppressor gene found. This protein also stabilizes constitutive heterochromatin to maintain the overall chromatin structure. The active, hypophosphorylated form of the protein binds transcription factor E2F1.
Molecular Weight:	106159
Gene ID:	5925
NCBI Accession:	NP_000312
UniProt:	P06400
Pathways:	Cell Division Cycle , Intracellular Steroid Hormone Receptor Signaling Pathway , Mitotic G1-G1/S Phases , DNA Replication , Maintenance of Protein Location , Synthesis of DNA , Autophagy

Application Details

Application Notes:	WB: 1:8000. WB: 1:1000. IHC-P: 1:50~100. FC: 1:10~50
Restrictions:	For Research Use only

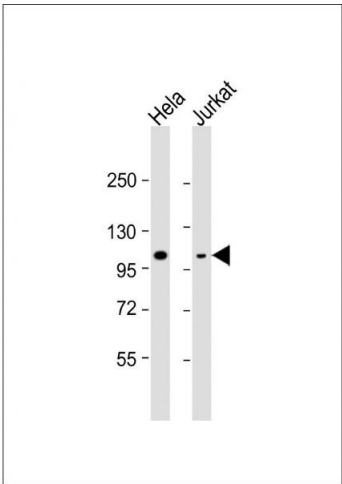
Handling

Format:	Liquid
Buffer:	Purified polyclonal antibody supplied in PBS with 0.09 % (W/V) sodium azide.
Preservative:	Sodium azide
Precaution of Use:	This product contains Sodium azide: a POISONOUS AND HAZARDOUS SUBSTANCE which should be handled by trained staff only.
Storage:	4 °C,-20 °C
Storage Comment:	Maintain refrigerated at 2-8 °C for up to 6 months. For long term storage store at -20 °C in small aliquots to prevent freeze-thaw cycles.
Expiry Date:	6 months



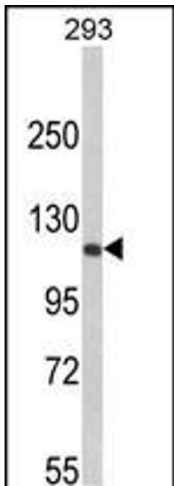
Flow Cytometry

Image 1. RB1 Antibody (C-term) (ABIN652516 and ABIN2842345) flow cytometric analysis of 293 cells (bottom histogram) compared to a negative control cell (top histogram). FITC-conjugated goat-anti-rabbit secondary antibodies were used for the analysis.



Western Blotting

Image 2. All lanes : Anti-RB1 Antibody (C-term) at 1:8000 dilution Lane 1: HeLa whole cell lysate Lane 2: Jurkat whole cell lysate Lysates/proteins at 20 µg per lane. Secondary Goat Anti-Rabbit IgG, (H+L), Peroxidase conjugated at 1/10000 dilution. Predicted band size : 106 kDa Blocking/Dilution buffer: 5 % NFDM/TBST.



Western Blotting

Image 3. Western blot analysis of RB1 Antibody (C-term) (ABIN652516 and ABIN2842345) in 293 cell line lysates (35 µg/lane). RB1 (arrow) was detected using the purified Pab.(2 µg/mL)

Please check the [product details page](#) for more images. Overall 4 images are available for ABIN652516.