

Datasheet for ABIN652518  
**anti-C5 antibody (N-Term)**

3 Images

1 Publication

[Go to Product page](#)

## Overview

Quantity:	400 µL
Target:	C5
Binding Specificity:	AA 253-281, N-Term
Reactivity:	Human
Host:	Rabbit
Clonality:	Polyclonal
Conjugate:	This C5 antibody is un-conjugated
Application:	Western Blotting (WB), Immunohistochemistry (Paraffin-embedded Sections) (IHC (p)), Flow Cytometry (FACS)

## Product Details

Immunogen:	This C5 antibody is generated from rabbits immunized with a KLH conjugated synthetic peptide between 253-281 AA from the N-terminal region of human C5.
Clone:	RB21866
Isotype:	IgG
Specificity:	This C5 antibody is generated from rabbits immunized with a KLH conjugated synthetic peptide between 260~289 amino acids from the N-terminal region of human C5.
Purification:	This antibody is purified through a protein A column, followed by peptide affinity purification.

## Target Details

Target:	C5
---------	----

## Target Details

Alternative Name:	C5 ( <a href="#">C5 Products</a> )
Background:	<p>C5 is the fifth component of complement, which plays an important role in inflammatory and cell killing processes. This protein is comprised of alpha and beta polypeptide chains that are linked by a disulfide bridge. An activation peptide, C5a, which is an anaphylatoxin that possesses potent spasmogenic and chemotactic activity, is derived from the alpha polypeptide via cleavage with a convertase. The C5b macromolecular cleavage product can form a complex with the C6 complement component, and this complex is the basis for formation of the membrane attack complex, which includes additional complement components.</p> <p>Synonyms: Complement C5, C3 and PZP-like alpha-2-macroglobulin domain-containing protein 4, Complement C5 beta chain, Complement C5 alpha chain, C5a anaphylatoxin, Complement C5 alpha' chain, CPAMD4, C5</p>
Molecular Weight:	188305 DA
Gene ID:	727
UniProt:	<a href="#">P01031</a>
Pathways:	<a href="#">Complement System</a> , <a href="#">Carbohydrate Homeostasis</a>

## Application Details

Application Notes:	WB = 1:1000, IHC (p) = 1:50-100, FACS = 1:10-50
Restrictions:	For Research Use only

## Handling

Format:	Liquid
Concentration:	0.48 mg/mL
Buffer:	PBS with 0.09 % (W/V) sodium azide
Preservative:	Sodium azide
Precaution of Use:	This product contains sodium azide: a POISONOUS AND HAZARDOUS SUBSTANCE which should be handled by trained staff only.
Storage:	4 °C/-20 °C
Storage Comment:	Maintain refrigerated at 2-8 °C for up to 6 months. For long term storage store at -20 °C in small aliquots to prevent freeze-thaw cycles.

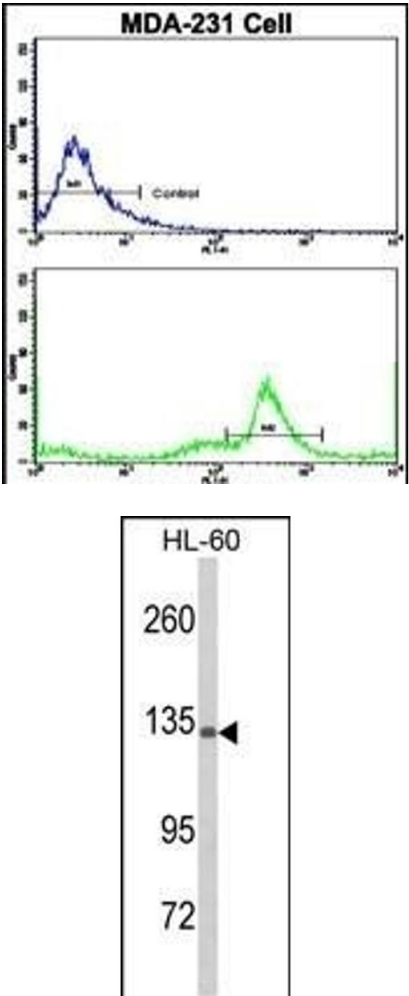
Expiry Date: 6 months

Publications

Product cited in: Jiang, Wang, Wang, Xu, Xu, Tang, Sun, Wang, Zhang: "Enolase1 (ENO1) and glucose-6-phosphate isomerase (GPI) are good markers to predict human sperm freezability." in: **Cryobiology**, Vol. 71, Issue 1, pp. 141-5, (2015) ([PubMed](#)).

Zhao, Li, Liao, Luo, Shi, Feng, Chen: "Evodiamine Induces Apoptosis and Inhibits Migration of HCT-116 Human Colorectal Cancer Cells." in: **International journal of molecular sciences**, Vol. 16, Issue 11, pp. 27411-21, (2015) ([PubMed](#)).

Images

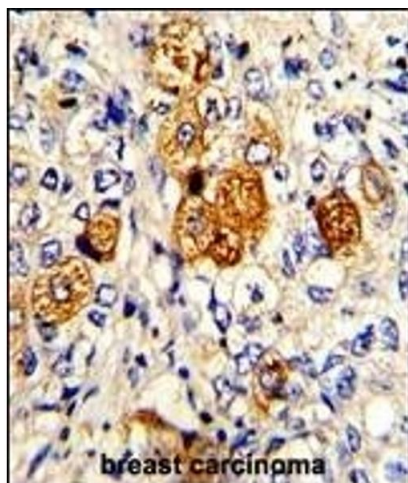


Flow Cytometry

**Image 1.** Flow cytometric analysis of MDA-231 cells using C5 Antibody (N-term)(bottom histogram) compared to a negative control cell (top histogram). FITC-conjugated goat-anti-rabbit secondary antibodies were used for the analysis.

Western Blotting

**Image 2.** Western blot analysis of C5 Antibody (N-term) (ABIN652518 and ABIN2842347) in HL-60 cell line lysates (35 µg/lane). C5 (arrow) was detected using the purified Pab.(2 µg/mL)



#### Immunohistochemistry (Paraffin-embedded Sections)

**Image 3.** Formalin-fixed and paraffin-embedded human breast carcinoma with C5 Antibody (N-term), which was peroxidase-conjugated to the secondary antibody, followed by DAB staining. This data demonstrates the use of this antibody for immunohistochemistry, clinical relevance has not been evaluated.