

Datasheet for ABIN652523  
**anti-Lipin 2 antibody (AA 262-288)**[Go to Product page](#)

## 3 Images

## Overview

|                      |   |
|----------------------|---|
| Quantity:            | 400 µL  |
| Target:              | Lipin 2 (LPIN2)   |
| Binding Specificity: | AA 262-288  |
| Reactivity:          | Human   |
| Host:                | Rabbit  |
| Clonality:           | Polyclonal  |
| Conjugate:           | This Lipin 2 antibody is un-conjugated  |
| Application:         | Western Blotting (WB), Flow Cytometry (FACS), Immunohistochemistry (Paraffin-embedded Sections) (IHC (p)) |

## Product Details

|               |   |
|---------------|---|
| Immunogen:    | This LPIN2 antibody is generated from rabbits immunized with a KLH conjugated synthetic peptide between 262-288 amino acids from the Central region of human LPIN2. |
| Clone:        | RB22326   |
| Isotype:      | Ig Fraction   |
| Purification: | This antibody is purified through a protein A column, followed by peptide affinity purification.  |

## Target Details

|                   |  |
|-------------------|--|
| Target:           | Lipin 2 (LPIN2)                          |
| Alternative Name: | LPIN2 ( <a href="#">LPIN2 Products</a> ) |

## Target Details

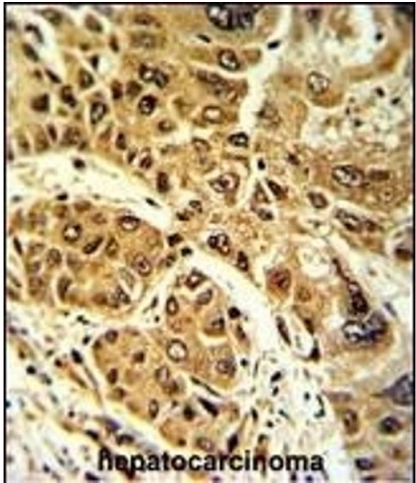
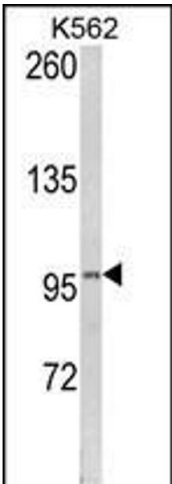
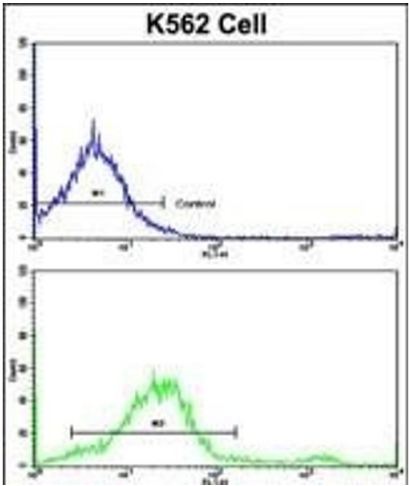
|                   |  |
|-------------------|--|
| Background:       | Defects in LPIN2 are the cause of Majeed syndrome. Majeed syndrome is an autosomal recessive disorder combining features of chronic recurrent multifocal osteomyelitis, congenital dyserythropoietic anemia and inflammatory dermatosis. |
| Molecular Weight: | 99399  |
| Gene ID:          | 9663   |
| NCBI Accession:   | <a href="#">NP_055461</a>  |
| UniProt:          | <a href="#">Q92539</a>   |

## Application Details

|                    |  |
|--------------------|--|
| Application Notes: | WB: 1:1000. IHC-P: 1:50~100. FC: 1:10~50 |
| Restrictions:      | For Research Use only                    |

## Handling

|                    |  |
|--------------------|--|
| Format:            | Liquid   |
| Buffer:            | Purified polyclonal antibody supplied in PBS with 0.09 % (W/V) sodium azide.   |
| Preservative:      | Sodium azide   |
| Precaution of Use: | This product contains Sodium azide: a POISONOUS AND HAZARDOUS SUBSTANCE which should be handled by trained staff only.                     |
| Storage:           | 4 °C, -20 °C   |
| Storage Comment:   | Maintain refrigerated at 2-8 °C for up to 6 months. For long term storage store at -20 °C in small aliquots to prevent freeze-thaw cycles. |
| Expiry Date:       | 6 months   |



### Flow Cytometry

**Image 1.** Flow cytometric analysis of K562 cells using LPIN2 Antibody (Center)(bottom histogram) compared to a negative control cell (top histogram). FITC-conjugated goat-anti-rabbit secondary antibodies were used for the analysis.

### Western Blotting

**Image 2.** Western blot analysis of LPIN2 Antibody (Center) (ABIN652523 and ABIN2842351) in K562 cell line lysates (35 µg/lane).LPIN2 (arrow) was detected using the purified Pab.(2 µg/mL)

### Immunohistochemistry (Paraffin-embedded Sections)

**Image 3.** Formalin-fixed and paraffin-embedded human hepatocarcinoma with LPIN2 Antibody (Center), which was peroxidase-conjugated to the secondary antibody, followed by DAB staining. This data demonstrates the use of this antibody for immunohistochemistry, clinical relevance has not been evaluated.