



[Go to Product page](#)

Datasheet for ABIN652532
anti-HPD antibody (C-Term)

2 Images

Overview

Quantity:	400 µL
Target:	HPD
Binding Specificity:	AA 255-284, C-Term
Reactivity:	Human
Host:	Rabbit
Clonality:	Polyclonal
Conjugate:	This HPD antibody is un-conjugated
Application:	Western Blotting (WB), Immunohistochemistry (Paraffin-embedded Sections) (IHC (p))

Product Details

Immunogen:	This HPD antibody is generated from rabbits immunized with a KLH conjugated synthetic peptide between 255-284 amino acids from the C-terminal region of human HPD.
Clone:	RB21004
Isotype:	Ig Fraction
Predicted Reactivity:	M
Purification:	This antibody is purified through a protein A column, followed by peptide affinity purification.

Target Details

Target:	HPD
Alternative Name:	HPD (HPD Products)

Target Details

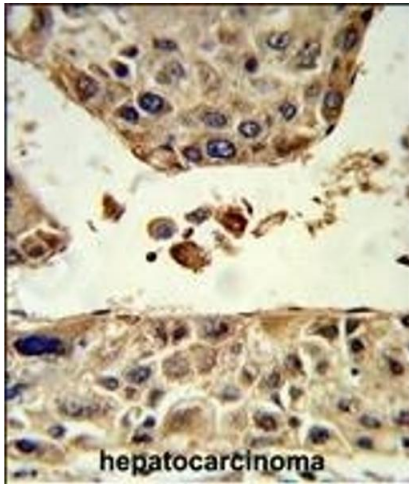
Background:	HPD is an enzyme in the catabolic pathway of tyrosine. This protein catalyzes the conversion of 4-hydroxyphenylpyruvate to homogentisate.
Molecular Weight:	44934
Gene ID:	3242
NCBI Accession:	NP_001165464 , NP_002141
UniProt:	P32754

Application Details

Application Notes:	WB: 1:1000. IHC-P: 1:50~100
Restrictions:	For Research Use only

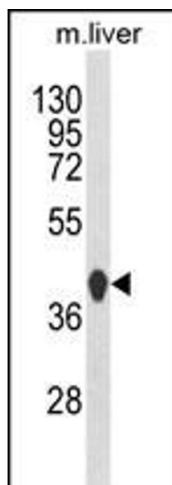
Handling

Format:	Liquid
Buffer:	Purified polyclonal antibody supplied in PBS with 0.09 % (W/V) sodium azide.
Preservative:	Sodium azide
Precaution of Use:	This product contains Sodium azide: a POISONOUS AND HAZARDOUS SUBSTANCE which should be handled by trained staff only.
Storage:	4 °C,-20 °C
Storage Comment:	Maintain refrigerated at 2-8 °C for up to 6 months. For long term storage store at -20 °C in small aliquots to prevent freeze-thaw cycles.
Expiry Date:	6 months



Immunohistochemistry (Paraffin-embedded Sections)

Image 1. Formalin-fixed and paraffin-embedded human hepatocarcinoma reacted with HPD Antibody (C-term), which was peroxidase-conjugated to the secondary antibody, followed by DAB staining. This data demonstrates the use of this antibody for immunohistochemistry, clinical relevance has not been evaluated.



Western Blotting

Image 2. Western blot analysis of HPD Antibody (C-term) (ABIN652532 and ABIN2842359) in mouse liver tissue lysates (35 µg/lane). HPD (arrow) was detected using the purified Pab.