

Datasheet for ABIN652538

anti-SERPINB7 antibody (AA 108-137)**3** Images[Go to Product page](#)

Overview

Quantity:	400 µL
Target:	SERPINB7
Binding Specificity:	AA 108-137
Reactivity:	Human
Host:	Rabbit
Clonality:	Polyclonal
Conjugate:	This SERPINB7 antibody is un-conjugated
Application:	Western Blotting (WB), Flow Cytometry (FACS), Immunohistochemistry (Paraffin-embedded Sections) (IHC (p))

Product Details

Immunogen:	This SERPINB7 antibody is generated from rabbits immunized with a KLH conjugated synthetic peptide between 108-137 amino acids from the Central region of human SERPINB7.
Clone:	RB21550
Isotype:	Ig Fraction
Purification:	This antibody is purified through a protein A column, followed by peptide affinity purification.

Target Details

Target:	SERPINB7
Alternative Name:	SERPINB7 (SERPINB7 Products)

Target Details

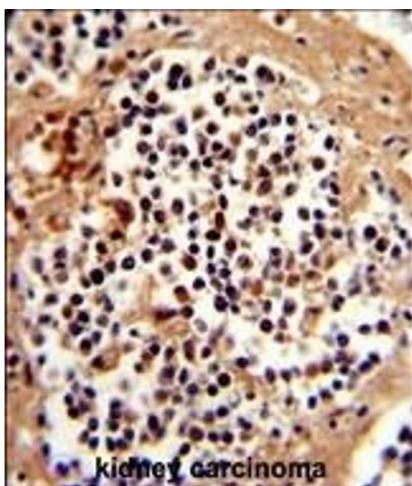
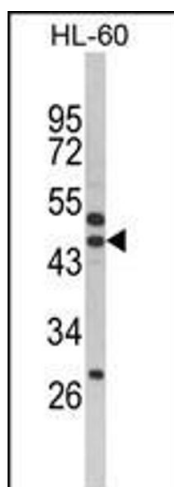
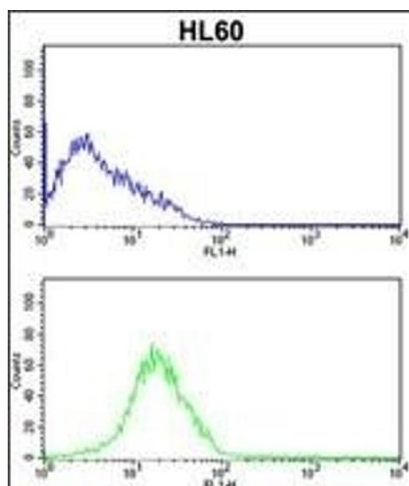
Background:	SERPINB7 might function as an inhibitor of Lys-specific proteases and might influence the maturation of megakaryocytes via its action as a serpin.
Molecular Weight:	42905
Gene ID:	8710
NCBI Accession:	NP_001035237 , NP_001248759 , NP_001248760 , NP_003775
UniProt:	O75635

Application Details

Application Notes:	WB: 1:1000. IHC-P: 1:50~100. FC: 1:10~50
Restrictions:	For Research Use only

Handling

Format:	Liquid
Buffer:	Purified polyclonal antibody supplied in PBS with 0.09 % (W/V) sodium azide.
Preservative:	Sodium azide
Precaution of Use:	This product contains Sodium azide: a POISONOUS AND HAZARDOUS SUBSTANCE which should be handled by trained staff only.
Storage:	4 °C,-20 °C
Storage Comment:	Maintain refrigerated at 2-8 °C for up to 6 months. For long term storage store at -20 °C in small aliquots to prevent freeze-thaw cycles.
Expiry Date:	6 months



Flow Cytometry

Image 1. SERPINB7 Antibody (Center) (ABIN652538 and ABIN2842363) flow cytometric analysis of HL60 cells (bottom histogram) compared to a negative control cell (top histogram). FITC-conjugated goat-anti-rabbit secondary antibodies were used for the analysis.

Western Blotting

Image 2. Western blot analysis of SERPINB7 Antibody (Center) (ABIN652538 and ABIN2842363) in HL-60 cell line lysates (35 µg/lane). SERPINB7 (arrow) was detected using the purified Pab.

Immunohistochemistry (Paraffin-embedded Sections)

Image 3. Formalin-fixed and paraffin-embedded human kidney carcinoma reacted with SERPINB7 Antibody (Center), which was peroxidase-conjugated to the secondary antibody, followed by DAB staining. This data demonstrates the use of this antibody for immunohistochemistry, clinical relevance has not been evaluated.