

Datasheet for ABIN652541

**anti-PPP2R2B antibody (AA 104-130)****3** Images[Go to Product page](#)

## Overview

Quantity:	400 µL
Target:	PPP2R2B
Binding Specificity:	AA 104-130
Reactivity:	Human
Host:	Rabbit
Clonality:	Polyclonal
Conjugate:	This PPP2R2B antibody is un-conjugated
Application:	Western Blotting (WB), Immunohistochemistry (Paraffin-embedded Sections) (IHC (p)), Flow Cytometry (FACS)

## Product Details

Immunogen:	This PPP2R2B antibody is generated from rabbits immunized with a KLH conjugated synthetic peptide between 104-130 amino acids from the Central region of human PPP2R2B.
Clone:	RB21638
Isotype:	Ig Fraction
Predicted Reactivity:	B, Pr, M, Pig, Rb, Rat, X
Purification:	This antibody is purified through a protein A column, followed by peptide affinity purification.

## Target Details

Target:	PPP2R2B
---------	---------

## Target Details

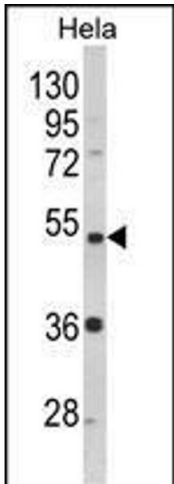
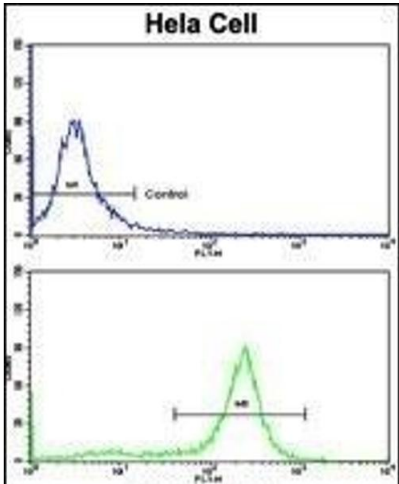
Alternative Name:	PPP2R2B ( <a href="#">PPP2R2B Products</a> )
Background:	PPP2R2B belongs to the phosphatase 2 regulatory subunit B family. Protein phosphatase 2 is one of the four major Ser/Thr phosphatases, and it is implicated in the negative control of cell growth and division. It consists of a common heteromeric core enzyme, which is composed of a catalytic subunit and a constant regulatory subunit, that associates with a variety of regulatory subunits. The B regulatory subunit might modulate substrate selectivity and catalytic activity. This protein is a beta isoform of the regulatory subunit B55 subfamily.
Molecular Weight:	51710
Gene ID:	5521
NCBI Accession:	<a href="#">NP_001258828</a> , <a href="#">NP_001258829</a> , <a href="#">NP_001258877</a> , <a href="#">NP_858060</a> , <a href="#">NP_858061</a> , <a href="#">NP_858062</a> , <a href="#">NP_858063</a> , <a href="#">NP_858064</a>
UniProt:	<a href="#">Q00005</a>
Pathways:	<a href="#">PI3K-Akt Signaling</a> , <a href="#">Mitotic G1-G1/S Phases</a> , <a href="#">Hepatitis C</a>

## Application Details

Application Notes:	WB: 1:1000. IHC-P: 1:50~100. FC: 1:10~50
Restrictions:	For Research Use only

## Handling

Format:	Liquid
Buffer:	Purified polyclonal antibody supplied in PBS with 0.09 % (W/V) sodium azide.
Preservative:	Sodium azide
Precaution of Use:	This product contains Sodium azide: a POISONOUS AND HAZARDOUS SUBSTANCE which should be handled by trained staff only.
Storage:	4 °C,-20 °C
Storage Comment:	Maintain refrigerated at 2-8 °C for up to 6 months. For long term storage store at -20 °C in small aliquots to prevent freeze-thaw cycles.
Expiry Date:	6 months



### Flow Cytometry

**Image 1.** Flow cytometric analysis of hela cells using P2R2B Antibody (Center)(bottom histogram) compared to a negative control cell (top histogram). FITC-conjugated goat-anti-rabbit secondary antibodies were used for the analysis.

### Western Blotting

**Image 2.** Western blot analysis of P2R2B Antibody (Center) (ABIN652541 and ABIN2842364) in HeLa cell line lysates (35 µg/lane). P2R2B (arrow) was detected using the purified Pab.

### Immunohistochemistry (Paraffin-embedded Sections)

**Image 3.** Formalin-fixed and paraffin-embedded human brain tissue with P2R2B Antibody (Center), which was peroxidase-conjugated to the secondary antibody, followed by DAB staining. This data demonstrates the use of this antibody for immunohistochemistry, clinical relevance has not been evaluated.