

Datasheet for ABIN652551
anti-Leiomodin 1 antibody (AA 214-241)[Go to Product page](#)

3 Images

Overview

Quantity:	400 µL
Target:	Leiomodin 1 (LMOD1)
Binding Specificity:	AA 214-241
Reactivity:	Human
Host:	Rabbit
Clonality:	Polyclonal
Conjugate:	This Leiomodin 1 antibody is un-conjugated
Application:	Western Blotting (WB), Flow Cytometry (FACS), Immunohistochemistry (Paraffin-embedded Sections) (IHC (p))

Product Details

Immunogen:	This LMOD1 antibody is generated from rabbits immunized with a KLH conjugated synthetic peptide between 214-241 amino acids from the Central region of human LMOD1.
Clone:	RB20579
Isotype:	Ig Fraction
Purification:	This antibody is prepared by Saturated Ammonium Sulfate (SAS) precipitation followed by dialysis against PBS.

Target Details

Target:	Leiomodin 1 (LMOD1)
Alternative Name:	LMOD1 (LMOD1 Products)

Target Details

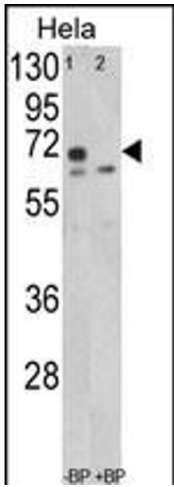
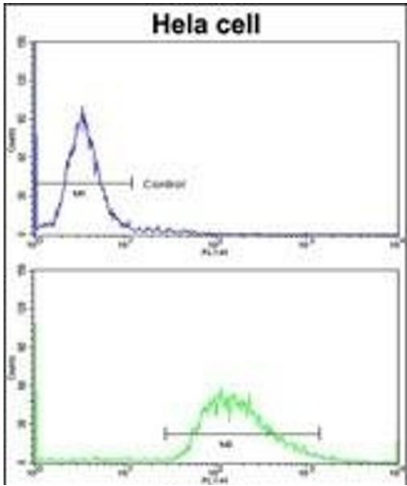
Background:	The leiomodlin 1 protein has a putative membrane-spanning region and 2 types of tandemly repeated blocks.
Molecular Weight:	67030
Gene ID:	25802
NCBI Accession:	NP_036266
UniProt:	P29536

Application Details

Application Notes:	WB: 1:1000. IHC-P: 1:50~100. FC: 1:10~50
Restrictions:	For Research Use only

Handling

Format:	Liquid
Buffer:	Purified polyclonal antibody supplied in PBS with 0.09 % (W/V) sodium azide.
Preservative:	Sodium azide
Precaution of Use:	This product contains Sodium azide: a POISONOUS AND HAZARDOUS SUBSTANCE which should be handled by trained staff only.
Storage:	4 °C,-20 °C
Storage Comment:	Maintain refrigerated at 2-8 °C for up to 6 months. For long term storage store at -20 °C in small aliquots to prevent freeze-thaw cycles.
Expiry Date:	6 months



Flow Cytometry

Image 1. Flow cytometric analysis of hela cells using LMOD1 Antibody (Center)(bottom histogram) compared to a negative control cell (top histogram)FITC-conjugated goat-anti-rabbit secondary antibodies were used for the analysis.

Western Blotting

Image 2. Western blot analysis of LMOD1 Antibody (Center) (ABIN652551 and ABIN2842369) in Hela cell line lysates (35 µg/lane). LMOD1 (arrow) was detected using the purified Pab.

Immunohistochemistry (Paraffin-embedded Sections)

Image 3. Formalin-fixed and paraffin-embedded human skeletal muscle reacted with LMOD1 Antibody (Center), which was peroxidase-conjugated to the secondary antibody, followed by DAB staining. This data demonstrates the use of this antibody for immunohistochemistry, clinical relevance has not been evaluated.