

Datasheet for ABIN652564
anti-Catalase antibody (AA 152-180)[Go to Product page](#)

3 Images

2 Publications

Overview

Quantity:	400 µL
Target:	Catalase (CAT)
Binding Specificity:	AA 152-180
Reactivity:	Human, Mouse
Host:	Rabbit
Clonality:	Polyclonal
Conjugate:	This Catalase antibody is un-conjugated
Application:	Western Blotting (WB), Immunohistochemistry (Paraffin-embedded Sections) (IHC (p)), Flow Cytometry (FACS)

Product Details

Immunogen:	This CAT antibody is generated from rabbits immunized with a KLH conjugated synthetic peptide between 152-180 amino acids from the Central region of human CAT.
Clone:	RB21613
Isotype:	Ig Fraction
Predicted Reactivity:	B, Zf, Pig, Rat
Purification:	This antibody is purified through a protein A column, followed by peptide affinity purification.

Target Details

Target:	Catalase (CAT)
---------	----------------

Target Details

Alternative Name:	CAT (CAT Products)
Background:	CAT occurs in almost all aerobically respiring organisms and serves to protect cells from the toxic effects of hydrogen peroxide. It promotes growth of cells including T-cells, B-cells, myeloid leukemia cells, melanoma cells, mastocytoma cells and normal and transformed fibroblast cells.
Molecular Weight:	59756
Gene ID:	847
NCBI Accession:	NP_001743
UniProt:	P04040
Pathways:	Cellular Glucan Metabolic Process , Cell RedoxHomeostasis , Photoperiodism

Application Details

Application Notes:	WB: 1:2000. IHC-P: 1:50~100. FC: 1:10~50
Restrictions:	For Research Use only

Handling

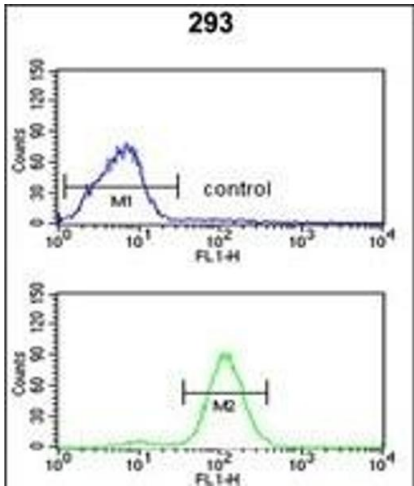
Format:	Liquid
Buffer:	Purified polyclonal antibody supplied in PBS with 0.09 % (W/V) sodium azide.
Preservative:	Sodium azide
Precaution of Use:	This product contains Sodium azide: a POISONOUS AND HAZARDOUS SUBSTANCE which should be handled by trained staff only.
Storage:	4 °C, -20 °C
Storage Comment:	Maintain refrigerated at 2-8 °C for up to 6 months. For long term storage store at -20 °C in small aliquots to prevent freeze-thaw cycles.
Expiry Date:	6 months

Publications

Product cited in:	Jiang, Wang, Wang, Xu, Xu, Tang, Sun, Wang, Zhang: "Enolase1 (ENO1) and glucose-6-phosphate isomerase (GPI) are good markers to predict human sperm freezability." in: Cryobiology , Vol. 71, Issue 1, pp. 141-5, (2015) (PubMed).
-------------------	---

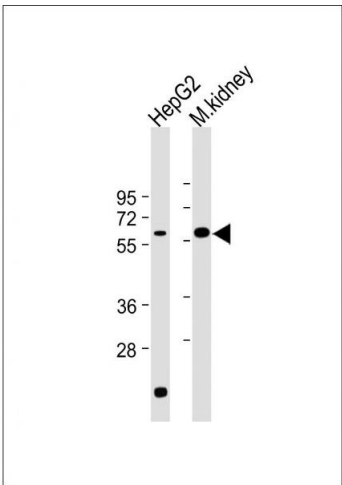
Zhao, Li, Liao, Luo, Shi, Feng, Chen: "Evodiamine Induces Apoptosis and Inhibits Migration of HCT-116 Human Colorectal Cancer Cells." in: **International journal of molecular sciences**, Vol. 16, Issue 11, pp. 27411-21, (2015) ([PubMed](#)).

Images



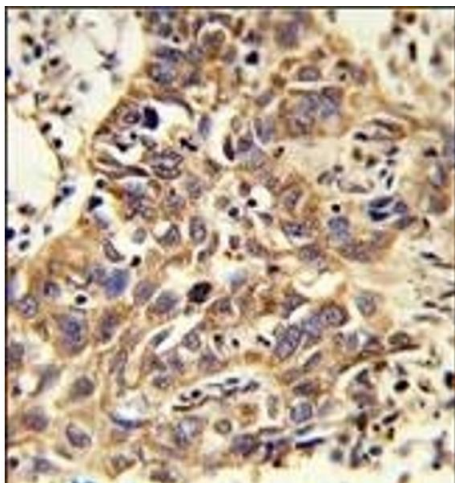
Flow Cytometry

Image 1. CAT Antibody (Center) (ABIN652564 and ABIN2842380) flow cytometric analysis of 293 cells (bottom histogram) compared to a negative control cell (top histogram). FITC-conjugated goat-anti-rabbit secondary antibodies were used for the analysis.



Western Blotting

Image 2. All lanes : Anti-CAT Antibody (Center) at 1:2000 dilution Lane 1: HepG2 whole cell lysate Lane 2: Mouse kidney lysate Lysates/proteins at 20 µg per lane. Secondary Goat Anti-Rabbit IgG, (H+L), Peroxidase conjugated at 1/10000 dilution. Predicted band size : 60 kDa Blocking/Dilution buffer: 5 % NFDM/TBST.



Immunohistochemistry (Paraffin-embedded Sections)

Image 3. Formalin-fixed and paraffin-embedded human lung carcinoma reacted with CAT Antibody (Center), which was peroxidase-conjugated to the secondary antibody, followed by DAB staining. This data demonstrates the use of this antibody for immunohistochemistry, clinical relevance has not been evaluated.