

Datasheet for ABIN652569
anti-KLRC1 antibody (C-Term)

6 Images



[Go to Product page](#)

Overview

Quantity:	200 µL
Target:	KLRC1
Binding Specificity:	AA 180-206, C-Term
Reactivity:	Human
Host:	Rabbit
Clonality:	Polyclonal
Conjugate:	This KLRC1 antibody is un-conjugated
Application:	Western Blotting (WB), Immunofluorescence (IF), Flow Cytometry (FACS), Immunohistochemistry (Paraffin-embedded Sections) (IHC (p))

Product Details

Immunogen:	This KLRC1 antibody is generated from rabbits immunized with a KLH conjugated synthetic peptide between 180-206 amino acids from the C-terminal region of human KLRC1.
Clone:	RB21885
Isotype:	Ig Fraction
Purification:	This antibody is purified through a protein A column, followed by peptide affinity purification.

Target Details

Target:	KLRC1
Alternative Name:	KLRC1 (KLRC1 Products)

Target Details

Background: Natural killer (NK) cells are lymphocytes that can mediate lysis of certain tumor cells and virus-infected cells without previous activation. They can also regulate specific humoral and cell-mediated immunity. This protein belongs to the killer cell lectin-like receptor family, also called NKG2 family, which is a group of transmembrane proteins preferentially expressed in NK cells. This family of proteins is characterized by the type II membrane orientation and the presence of a C-type lectin domain. This protein forms a complex with another family member, KLRD1/CD94, and has been implicated in the recognition of the MHC class I HLA-E molecules in NK cells.

Molecular Weight: 26314

Gene ID: 3821

NCBI Accession: [NP_002250](#), [NP_015567](#), [NP_998822](#), [NP_998823](#)

UniProt: [P26715](#)

Application Details

Application Notes: IF: 1:25. WB: 1:2000. WB: 1:1000. WB: 1:2000. IHC-P: 1:50~100. FC: 1:25

Restrictions: For Research Use only

Handling

Format: Liquid

Buffer: Purified polyclonal antibody supplied in PBS with 0.09 % (W/V) sodium azide.

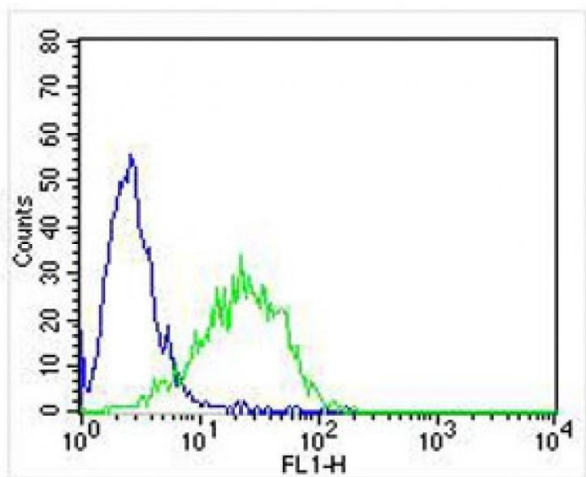
Preservative: Sodium azide

Precaution of Use: This product contains Sodium azide: a POISONOUS AND HAZARDOUS SUBSTANCE which should be handled by trained staff only.

Storage: 4 °C,-20 °C

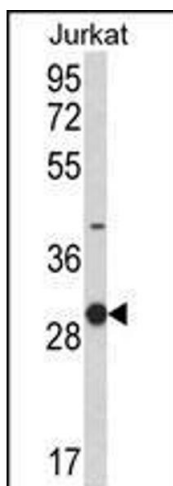
Storage Comment: Maintain refrigerated at 2-8 °C for up to 6 months. For long term storage store at -20 °C in small aliquots to prevent freeze-thaw cycles.

Expiry Date: 6 months



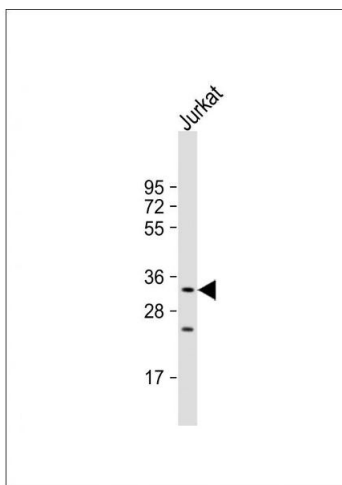
Flow Cytometry

Image 1. Overlay histogram showing Jurkat cells stained with (ABIN652569 and ABIN2842382) (green line). The cells were fixed with 2 % paraformaldehyde (10 min). The cells were then incubated in 2 % bovine serum albumin to block non-specific protein-protein interactions followed by the antibody ((ABIN652569 and ABIN2842382), 1:25 dilution) for 60 min at 37 °C. The secondary antibody used was Goat-Anti-Rabbit IgG, DyLight® 488 Conjugated Highly Cross-Adsorbed(NA168821) at 1/400 dilution for 40 min at 37 °C. Isotype control antibody (blue line) was rabbit IgG (1 µg/1x10⁶ cells) used under the same conditions. Acquisition of >10,000 events was performed.



Western Blotting

Image 2. Western blot analysis of KLRC1 Antibody (C-term) (ABIN652569 and ABIN2842382) in Jurkat cell line lysates (35 µg/lane). KLRC1 (arrow) was detected using the purified Pab.



Western Blotting

Image 3. Anti-KLRC1 Antibody (C-term) at 1:2000 dilution + Jurkat whole cell lysate Lysates/proteins at 20 µg per lane. Secondary Goat Anti-Rabbit IgG, (H+L), Peroxidase conjugated at 1/10000 dilution. Predicted band size : 26 kDa Blocking/Dilution buffer: 5 % NFDm/TBST.

Please check the [product details page](#) for more images. Overall 6 images are available for ABIN652569.