

Datasheet for ABIN652570  
**anti-KLRC2 antibody (N-Term)**

## 5 Images

[Go to Product page](#)

## Overview

|                      |   |
|----------------------|---|
| Quantity:            | 400 µL  |
| Target:              | KLRC2   |
| Binding Specificity: | AA 1-30, N-Term   |
| Reactivity:          | Human   |
| Host:                | Rabbit  |
| Clonality:           | Polyclonal  |
| Conjugate:           | This KLRC2 antibody is un-conjugated  |
| Application:         | Western Blotting (WB), Flow Cytometry (FACS), Immunohistochemistry (Paraffin-embedded Sections) (IHC (p)) |

## Product Details

|               |   |
|---------------|---|
| Immunogen:    | This KLRC2 antibody is generated from rabbits immunized with a KLH conjugated synthetic peptide between 1-30 amino acids from the N-terminal region of human KLRC2. |
| Clone:        | RB21886   |
| Isotype:      | Ig Fraction   |
| Purification: | This antibody is purified through a protein A column, followed by peptide affinity purification.  |

## Target Details

|                   |  |
|-------------------|--|
| Target:           | KLRC2                                    |
| Alternative Name: | KLRC2 ( <a href="#">KLRC2 Products</a> ) |

## Target Details

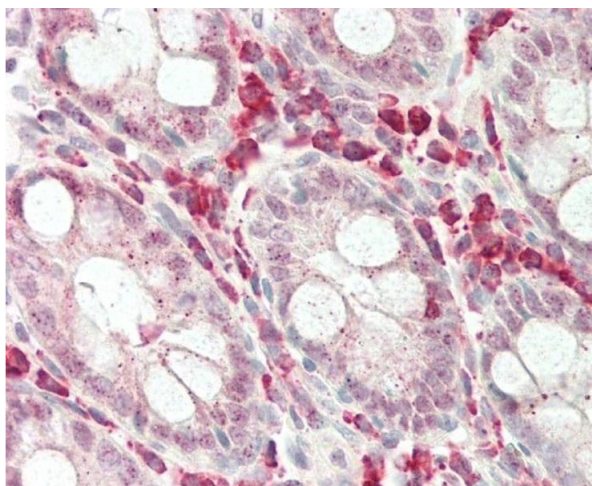
|                   |   |
|-------------------|---|
| Background:       | KLRC2 plays a role as a receptor for the recognition of MHC class I HLA-E molecules by NK cells and some cytotoxic T-cells. |
| Molecular Weight: | 26072   |
| Gene ID:          | 3822  |
| NCBI Accession:   | <a href="#">NP_002251</a>   |
| UniProt:          | <a href="#">P26717</a>  |

## Application Details

|                    |  |
|--------------------|--|
| Application Notes: | WB: 1:1000. WB: 1:2000. IHC-P: 1:50~100. IHC-P: 1:100. FC: 1:10~50 |
| Restrictions:      | For Research Use only  |

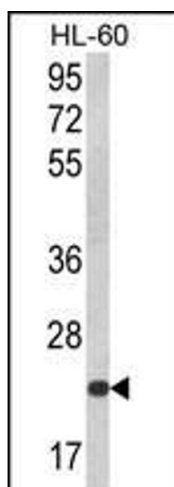
## Handling

|                    |  |
|--------------------|--|
| Format:            | Liquid   |
| Buffer:            | Purified polyclonal antibody supplied in PBS with 0.09 % (W/V) sodium azide.   |
| Preservative:      | Sodium azide   |
| Precaution of Use: | This product contains Sodium azide: a POISONOUS AND HAZARDOUS SUBSTANCE which should be handled by trained staff only.                     |
| Storage:           | 4 °C,-20 °C  |
| Storage Comment:   | Maintain refrigerated at 2-8 °C for up to 6 months. For long term storage store at -20 °C in small aliquots to prevent freeze-thaw cycles. |
| Expiry Date:       | 6 months   |



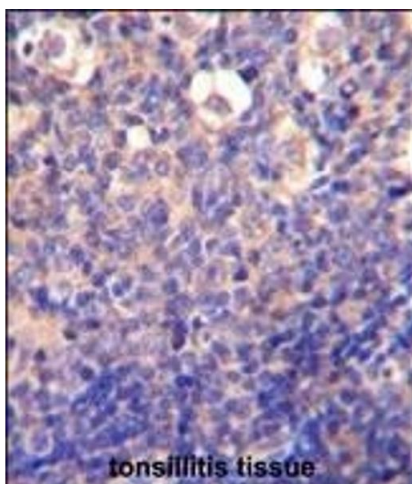
#### Immunohistochemistry (Paraffin-embedded Sections)

**Image 1.** Formalin-fixed and paraffin-embedded H.colon tissue reacted with KLRC2 Antibody (N-term) (ABIN652570 and ABIN2842383).



#### Western Blotting

**Image 2.** Western blot analysis of KLRC2 Antibody (N-term) (ABIN652570 and ABIN2842383) in HL-60 cell line lysates (35 µg/lane). KLRC2 (arrow) was detected using the purified Pab.



#### Immunohistochemistry (Paraffin-embedded Sections)

**Image 3.** KLRC2 Antibody (N-term) (ABIN652570 and ABIN2842383) immunohistochemistry analysis in formalin fixed and paraffin embedded human tonsillitis tissue followed by peroxidase conjugation of the secondary antibody and DAB staining. This data demonstrates the use of the KLRC2 Antibody (N-term) for immunohistochemistry. Clinical relevance has not been evaluated.

Please check the [product details page](#) for more images. Overall 5 images are available for ABIN652570.