

Datasheet for ABIN652575

anti-ESRRA antibody (AA 131-159)**5** Images[Go to Product page](#)

Overview

Quantity:	400 µL
Target:	ESRRA
Binding Specificity:	AA 131-159
Reactivity:	Human
Host:	Rabbit
Clonality:	Polyclonal
Conjugate:	This ESRRA antibody is un-conjugated
Application:	Western Blotting (WB), Immunofluorescence (IF), Immunohistochemistry (Paraffin-embedded Sections) (IHC (p)), Flow Cytometry (FACS)

Product Details

Immunogen:	This ESRRA antibody is generated from rabbits immunized with a KLH conjugated synthetic peptide between 131-159 amino acids from the Central region of human ESRRA.
Clone:	RB22490
Isotype:	Ig Fraction
Predicted Reactivity:	M, Rat
Purification:	This antibody is purified through a protein A column, followed by peptide affinity purification.

Target Details

Target:	ESRRA
---------	-------

Target Details

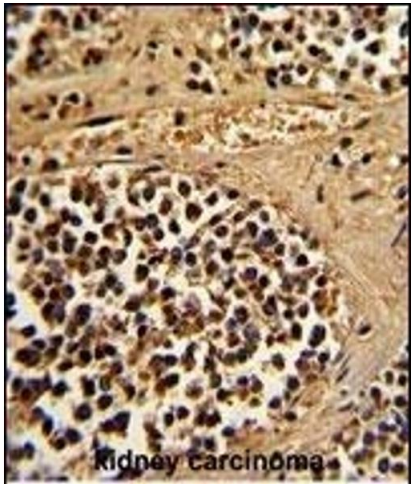
Alternative Name:	ESRRA (ESRRA Products)
Background:	ESRRA is a nuclear receptor that is closely related to the estrogen receptor. This protein acts as a site-specific transcription regulator and has been also shown to interact with estrogen and the transcription factor TFIIIB by direct protein-protein contact. The binding and regulatory activities of this protein have been demonstrated in the regulation of a variety of genes including lactoferrin, osteopontin, medium-chain acyl coenzyme A dehydrogenase (MCAD) and thyroid hormone receptor genes.
Molecular Weight:	45510
Gene ID:	2101
NCBI Accession:	NP_001269379 , NP_001269380 , NP_004442
UniProt:	P11474
Pathways:	Nuclear Receptor Transcription Pathway , Steroid Hormone Mediated Signaling Pathway , Regulation of Lipid Metabolism by PPARalpha

Application Details

Application Notes:	IF: 1:10~50. WB: 1:1000. WB: 1:1000. IHC-P: 1:50~100. FC: 1:10~50
Restrictions:	For Research Use only

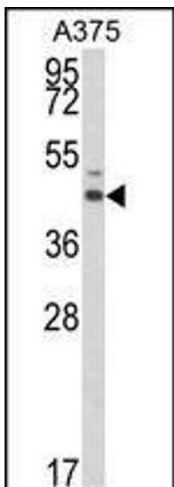
Handling

Format:	Liquid
Buffer:	Purified polyclonal antibody supplied in PBS with 0.09 % (W/V) sodium azide.
Preservative:	Sodium azide
Precaution of Use:	This product contains Sodium azide: a POISONOUS AND HAZARDOUS SUBSTANCE which should be handled by trained staff only.
Storage:	4 °C, -20 °C
Storage Comment:	Maintain refrigerated at 2-8 °C for up to 6 months. For long term storage store at -20 °C in small aliquots to prevent freeze-thaw cycles.
Expiry Date:	6 months



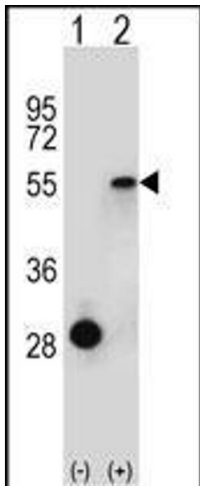
Immunohistochemistry (Paraffin-embedded Sections)

Image 1. Formalin-fixed and paraffin-embedded human kidney carcinoma reacted with ESRRR Antibody (Center), which was peroxidase-conjugated to the secondary antibody, followed by DAB staining. This data demonstrates the use of this antibody for immunohistochemistry, clinical relevance has not been evaluated.



Western Blotting

Image 2. Western blot analysis of ESRRR Antibody (Center) (ABIN652575 and ABIN2842387) in cell line lysates (35 µg/lane). ESRRR (arrow) was detected using the purified Pab.



Western Blotting

Image 3. Western blot analysis of ESRRR (arrow) using rabbit polyclonal ESRRR Antibody (Center) (ABIN652575 and ABIN2842387). 293 cell lysates (2 µg/lane) either nontransfected (Lane 1) or transiently transfected (Lane 2) with the ESRRR gene.

Please check the [product details page](#) for more images. Overall 5 images are available for ABIN652575.