

Datasheet for ABIN652576
anti-EHHADH antibody (C-Term)

4 Images

[Go to Product page](#)

Overview

Quantity:	400 µL
Target:	EHHADH
Binding Specificity:	AA 662-690, C-Term
Reactivity:	Human, Mouse
Host:	Rabbit
Clonality:	Polyclonal
Conjugate:	This EHHADH antibody is un-conjugated
Application:	Western Blotting (WB), Immunohistochemistry (Paraffin-embedded Sections) (IHC (p)), Flow Cytometry (FACS)

Product Details

Immunogen:	This EHHADH antibody is generated from rabbits immunized with a KLH conjugated synthetic peptide between 662-690 amino acids from the C-terminal region of human EHHADH.
Clone:	RB22585
Isotype:	Ig Fraction
Predicted Reactivity:	Rat
Purification:	This antibody is purified through a protein A column, followed by peptide affinity purification.

Target Details

Target:	EHHADH
---------	--------

Target Details

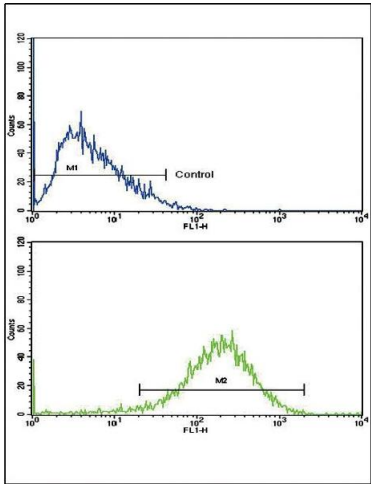
Alternative Name:	EHHADH (EHHADH Products)
Background:	EHHADH is a bifunctional enzyme and is one of the four enzymes of the peroxisomal beta-oxidation pathway. The N-terminal region of the encoded protein contains enoyl-CoA hydratase activity while the C-terminal region contains 3-hydroxyacyl-CoA dehydrogenase activity.
Molecular Weight:	79495
Gene ID:	1962
NCBI Accession:	NP_001159887 , NP_001957
UniProt:	Q08426
Pathways:	Monocarboxylic Acid Catabolic Process

Application Details

Application Notes:	WB: 1:1000. WB: 1:1000. IHC-P: 1:10~50. FC: 1:10~50
Restrictions:	For Research Use only

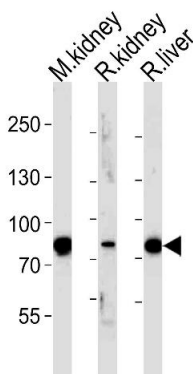
Handling

Format:	Liquid
Buffer:	Purified polyclonal antibody supplied in PBS with 0.09 % (W/V) sodium azide.
Preservative:	Sodium azide
Precaution of Use:	This product contains Sodium azide: a POISONOUS AND HAZARDOUS SUBSTANCE which should be handled by trained staff only.
Storage:	4 °C,-20 °C
Storage Comment:	Maintain refrigerated at 2-8 °C for up to 6 months. For long term storage store at -20 °C in small aliquots to prevent freeze-thaw cycles.
Expiry Date:	6 months



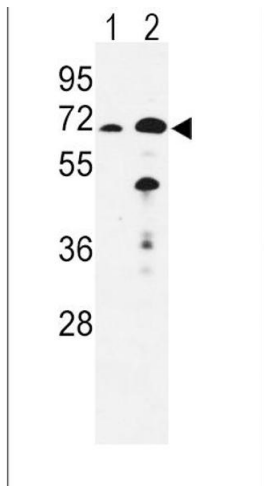
Flow Cytometry

Image 1. Flow cytometric analysis of HepG2 cells using EHHADH Antibody (C-term)(bottom histogram) compared to a negative control cell (top histogram). FITC-conjugated goat-anti-rabbit secondary antibodies were used for the analysis.



Western Blotting

Image 2. Western blot analysis of lysates from mouse kidney, rat kidney and liver tissue (from left to right), using EHHADH Antibody (C-term) (ABIN652576 and ABIN2842388). (ABIN652576 and ABIN2842388) was diluted at 1:1000 at each lane. A goat anti-rabbit IgG H&L(HRP) at 1:5000 dilution was used as the secondary antibody. Lysates at 35 µg per lane.



Western Blotting

Image 3. Western blot analysis of EHHADH Antibody (C-term) (ABIN652576 and ABIN2842388) in mouse liver(lane 1), kidney(lane 2) tissue lysates (35 µg/lane). EHHADH (arrow) was detected using the purified Pab.

Please check the [product details page](#) for more images. Overall 4 images are available for ABIN652576.