

Datasheet for ABIN652577

**anti-KLC1 antibody (AA 389-415)**

4 Images

1 Publication

[Go to Product page](#)

## Overview

Quantity:	400 µL
Target:	KLC1
Binding Specificity:	AA 389-415
Reactivity:	Human
Host:	Rabbit
Clonality:	Polyclonal
Conjugate:	This KLC1 antibody is un-conjugated
Application:	Western Blotting (WB), Flow Cytometry (FACS), Immunohistochemistry (Paraffin-embedded Sections) (IHC (p))

## Product Details

Immunogen:	This KLC1 antibody is generated from rabbits immunized with a KLH conjugated synthetic peptide between 389-415 amino acids from the Central region of human KLC1.
Clone:	RB22636
Isotype:	Ig Fraction
Predicted Reactivity:	Rat
Purification:	This antibody is purified through a protein A column, followed by peptide affinity purification.

## Target Details

Target:	KLC1
---------	------

## Target Details

Alternative Name:	KLC1 ( <a href="#">KLC1 Products</a> )
Background:	Kinesin is a microtubule-associated force-producing protein that may play a role in organelle transport. The light chain may function in coupling of cargo to the heavy chain or in the modulation of its ATPase activity.
Molecular Weight:	65310
Gene ID:	3831
NCBI Accession:	<a href="#">NP_001123579</a> , <a href="#">NP_005543</a> , <a href="#">NP_891553</a>
UniProt:	<a href="#">Q07866</a>
Pathways:	<a href="#">Ribonucleoprotein Complex Subunit Organization</a>

## Application Details

Application Notes:	WB: 1:1000. IHC-P: 1:50~100. IHC-P: 1:100. FC: 1:10~50
Restrictions:	For Research Use only

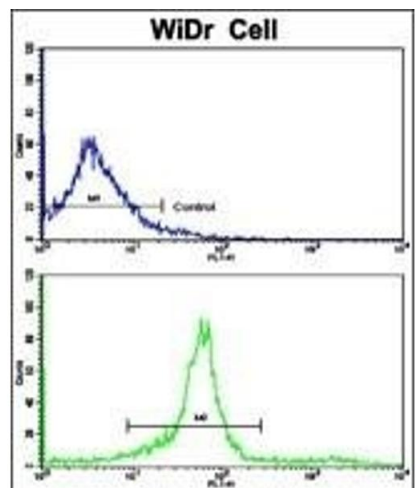
## Handling

Format:	Liquid
Buffer:	Purified polyclonal antibody supplied in PBS with 0.09 % (W/V) sodium azide.
Preservative:	Sodium azide
Precaution of Use:	This product contains Sodium azide: a POISONOUS AND HAZARDOUS SUBSTANCE which should be handled by trained staff only.
Storage:	4 °C, -20 °C
Storage Comment:	Maintain refrigerated at 2-8 °C for up to 6 months. For long term storage store at -20 °C in small aliquots to prevent freeze-thaw cycles.
Expiry Date:	6 months

## Publications

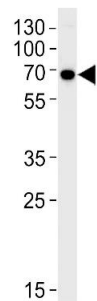
Product cited in:	Jiang, Wang, Wang, Xu, Xu, Tang, Sun, Wang, Zhang: "Enolase1 (ENO1) and glucose-6-phosphate isomerase (GPI) are good markers to predict human sperm freezability." in: <b>Cryobiology</b> , Vol. 71, Issue 1, pp. 141-5, (2015) ( <a href="#">PubMed</a> ).
-------------------	---

Zhao, Li, Liao, Luo, Shi, Feng, Chen: "Evodiamine Induces Apoptosis and Inhibits Migration of HCT-116 Human Colorectal Cancer Cells." in: **International journal of molecular sciences**, Vol. 16, Issue 11, pp. 27411-21, (2015) ([PubMed](#)).



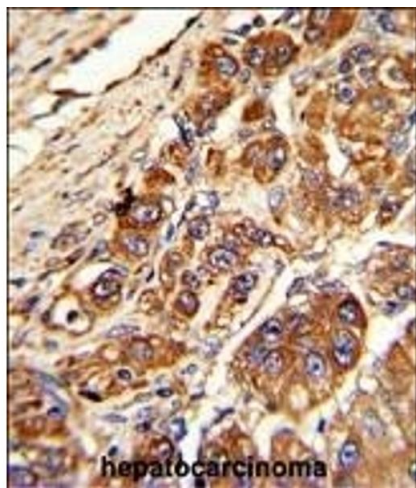
Flow Cytometry

**Image 1.** Flow cytometric analysis of widr cells using KLC1 Antibody (Center)(bottom histogram) compared to a negative control cell (top histogram). FITC-conjugated goat-anti-rabbit secondary antibodies were used for the analysis.



Western Blotting

**Image 2.** KLC1 Antibody (Center) (ABIN652577 and ABIN2842389) western blot analysis in Hela cell line lysates (35 µg/lane). This demonstrates the KLC1 antibody detected the KLC1 protein (arrow).



Immunohistochemistry (Paraffin-embedded Sections)

**Image 3.** Formalin-fixed and paraffin-embedded human hepatocarcinoma with KLC1 Antibody (Center), which was peroxidase-conjugated to the secondary antibody, followed by DAB staining. This data demonstrates the use of this antibody for immunohistochemistry, clinical relevance has not been evaluated.

## Images

---

Please check the [product details page](#) for more images. Overall 4 images are available for ABIN652577.