

Datasheet for ABIN652579  
**anti-SCP2 antibody (AA 358-385)**

## 3 Images

[Go to Product page](#)

## Overview

Quantity:	400 µL
Target:	SCP2
Binding Specificity:	AA 358-385
Reactivity:	Human, Mouse, Rat
Host:	Rabbit
Clonality:	Polyclonal
Application:	Western Blotting (WB), Immunohistochemistry (Paraffin-embedded Sections) (IHC (p)), Flow Cytometry (FACS)

## Product Details

Immunogen:	This SCP2 antibody is generated from rabbits immunized with a KLH conjugated synthetic peptide between 358-385 amino acids from the Central region of human SCP2.
Clone:	RB22648
Isotype:	Ig Fraction
Predicted Reactivity:	B, Rb
Purification:	This antibody is purified through a protein A column, followed by peptide affinity purification.

## Target Details

Target:	SCP2
Alternative Name:	SCP2 ( <a href="#">SCP2 Products</a> )

## Target Details

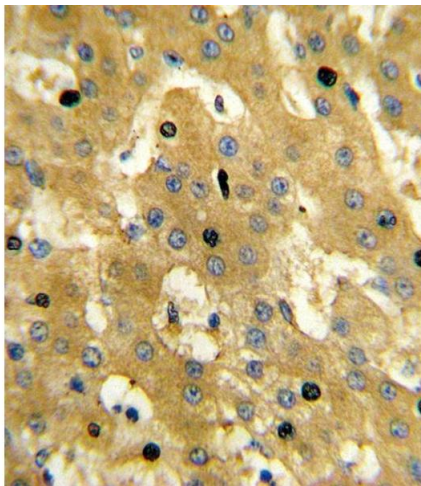
Background:	SCP2 mediates in vitro the transfer of all common phospholipids, cholesterol and gangliosides between membranes. It may play a role in regulating steroidogenesis.
Molecular Weight:	58994
Gene ID:	6342
NCBI Accession:	<a href="#">NP_001007099</a> , <a href="#">NP_001007100</a> , <a href="#">NP_001007101</a> , <a href="#">NP_001007251</a> , <a href="#">NP_001180528</a> , <a href="#">NP_001180546</a> , <a href="#">NP_002970</a>
UniProt:	<a href="#">P22307</a>
Pathways:	<a href="#">C21-Steroid Hormone Metabolic Process</a> , <a href="#">Monocarboxylic Acid Catabolic Process</a>

## Application Details

Application Notes:	WB: 1:500-2000. IHC-P: 1:10~50. FC: 1:10~50
Restrictions:	For Research Use only

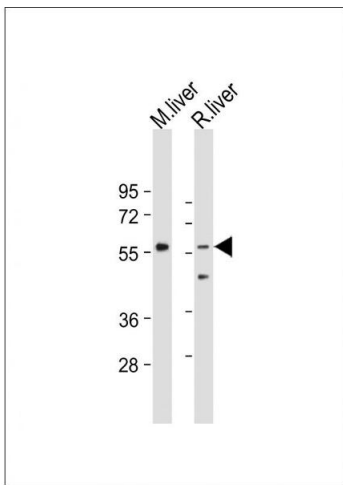
## Handling

Format:	Liquid
Buffer:	Purified polyclonal antibody supplied in PBS with 0.09 % (W/V) sodium azide.
Preservative:	Sodium azide
Precaution of Use:	This product contains Sodium azide: a POISONOUS AND HAZARDOUS SUBSTANCE which should be handled by trained staff only.
Storage:	4 °C,-20 °C
Storage Comment:	Maintain refrigerated at 2-8 °C for up to 6 months. For long term storage store at -20 °C in small aliquots to prevent freeze-thaw cycles.
Expiry Date:	6 months



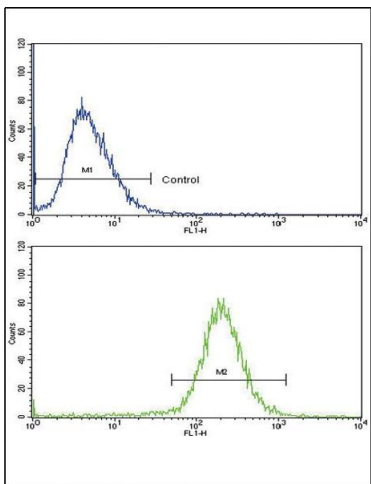
### Immunohistochemistry (Paraffin-embedded Sections)

**Image 1.** Formalin-fixed and paraffin-embedded human hepatocarcinoma reacted with SCP2 Antibody (Center), which was peroxidase-conjugated to the secondary antibody, followed by DAB staining. This data demonstrates the use of this antibody for immunohistochemistry, clinical relevance has not been evaluated.



### Western Blotting

**Image 2.** All lanes : Anti-SCP2 Antibody (Center) at 1:500-2000 dilution Lane 1: Mouse liver tissue lysate Lane 2: Rat liver tissue lysate Lysates/proteins at 20 µg per lane. Secondary Goat Anti-Rabbit IgG, (H+L), Peroxidase conjugated at 1/10000 dilution. Predicted band size : 59 kDa Blocking/Dilution buffer: 5 % NFDM/TBST.



### Flow Cytometry

**Image 3.** Flow cytometric analysis of HepG2 cells using SCP2 Antibody (Center)(bottom histogram) compared to a negative control cell (top histogram). FITC-conjugated goat-anti-rabbit secondary antibodies were used for the analysis.